

Stearns Crossing

1003-1041 Stearns Road Bartlett, IL

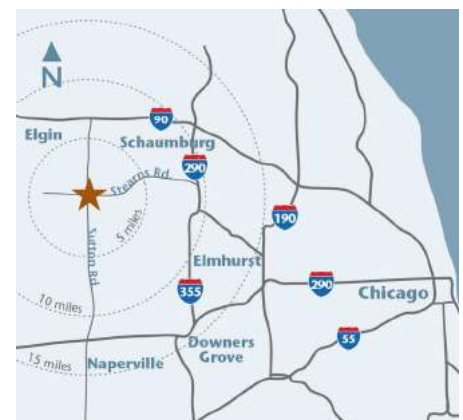


SUITES AVAILABLE FROM 1,200 TO 1,831 SF
NOW OPEN!



Property Highlights

- » 92,000-square-foot* power center
- » Anchored by AMITA Health - a state-of-the-art \$35 million healthcare facility
- » Significant exposure from Route 59 | 39,000 VPD.
- » Located in affluent suburban Chicago, 35 miles from The Loop.
- » Household incomes within a five-mile radius average more than \$98,000.**



CBRE
700 Commerce Drive, Suite 550
Oak Brook, IL 60523
www.cbre.com

Marcy Wood
Vice President
Office: 630.573.1287
Email: marcy.wood@cbre.com

Stearns Crossing

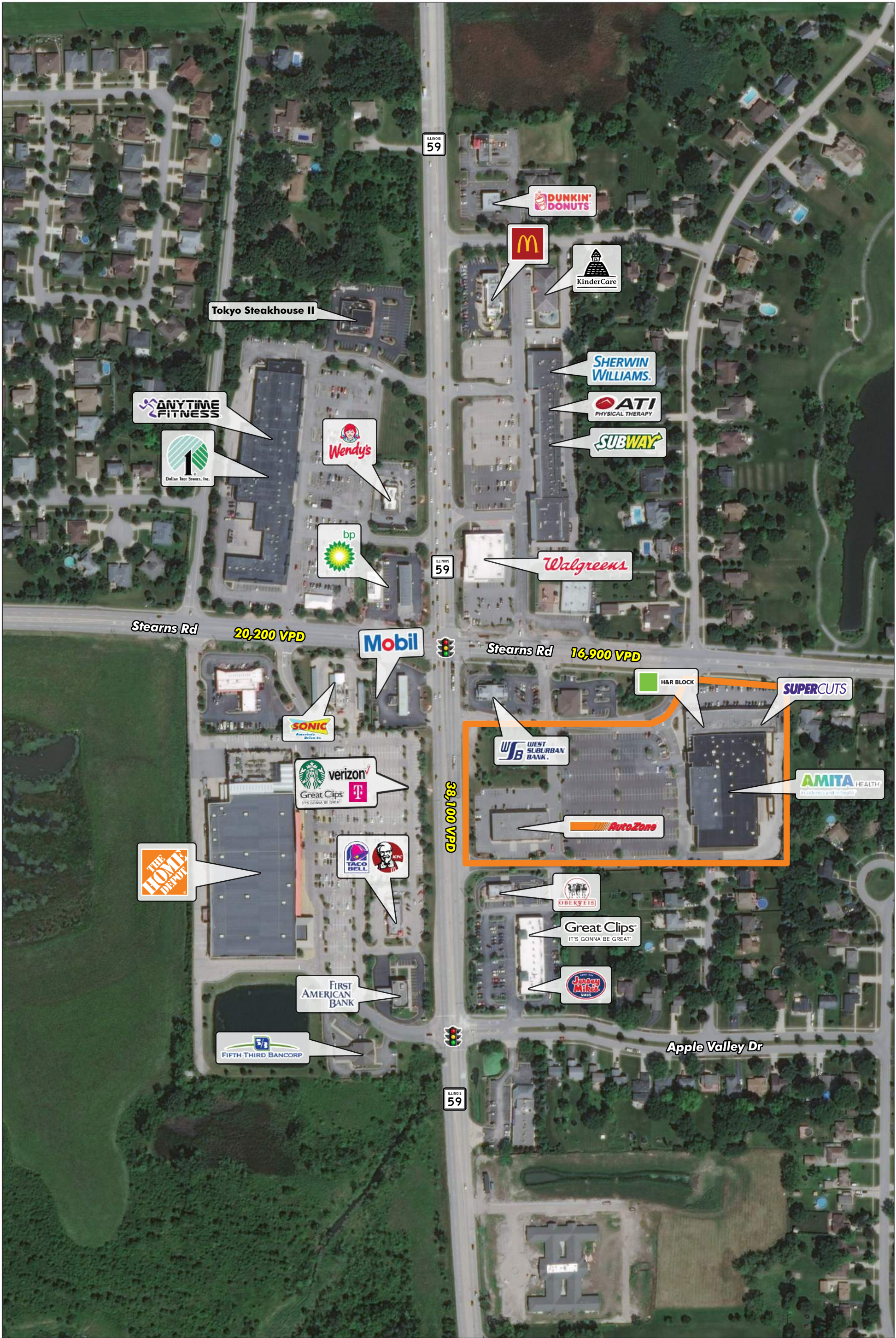


Property Lineup and Square Footage

Available	1,831 SF	McMae's	2,800 SF	Nail Care Salon	900 SF	Supercuts	1,295 SF
Available	1,200 SF	Cigarettes Cheaper	800 SF	H&R Block	1,400 SF	All Cleaners	1,505 SF
Available	1,400 SF	Amita Healthcare	65,613 SF	Stella's Social Club	1,400 SF	Total	95,436 SF
Allstate	1,400 SF	Chase Bank	1,200 SF	Remax Associates West	4,200 SF		
AutoZone	7,392 SF	More Wireless	900 SF	Eye Level	1,400 SF		

Stearns Crossing

Bartlett, Illinois



Stearns Crossing

VER
LISTED
NYSE

Anchors



Market Data

Demographics**	1 Miles	3 Miles	5 Miles
2018 Estimated Population:	5,205	62,061	197,996
2018 Estimated Daytime:	2,717	14,739	54,963
2018 Estimated Households:	1,743	20,735	65,052
2018 Estimated Avg. Household Income:	\$ 132,486	\$ 112,118	\$ 103,810

Not to scale. *NOT A PART. **Source: ESRI.

Owned and managed by VEREIT, Inc.