

NORSOUTH INDUSTRIAL PARK

2222 VERUS STREET | SAN DIEGO, CA 92154

Voit

REAL ESTATE SERVICES



LEASE RATE | \$1.05 MODIFIED GROSS (PLUS \$150 / MONTH CAM)

PROPERTY FEATURES

- ±16' Clear Height in Warehouse
- Two (2) Ground Level Loading Door
- Zoning: IL-2-1 – City of San Diego
- Ideal Uses: Wholesale/Warehouse/Manufacturing
- Excellent I-5 Freeway Access
- HUB Zone Qualified

Suite	SF	Comments
D	± 4,390	70% Improved Office and Show-room, Balance Warehouse

CURT PERRY

Senior Associate
858.458.3304
cperry@voitco.com
Lic. #01466077



NORSOUTH INDUSTRIAL PARK

2222 VERUS STREET | SAN DIEGO, CA 92154

Voit

REAL ESTATE SERVICES



SITE PLAN



CURT PERRY | Senior Associate | 858.458.3304 | cperry@voitco.com | Lic. #01466077 | 4180 La Jolla Village Drive, Suite 100, La Jolla, CA 92037

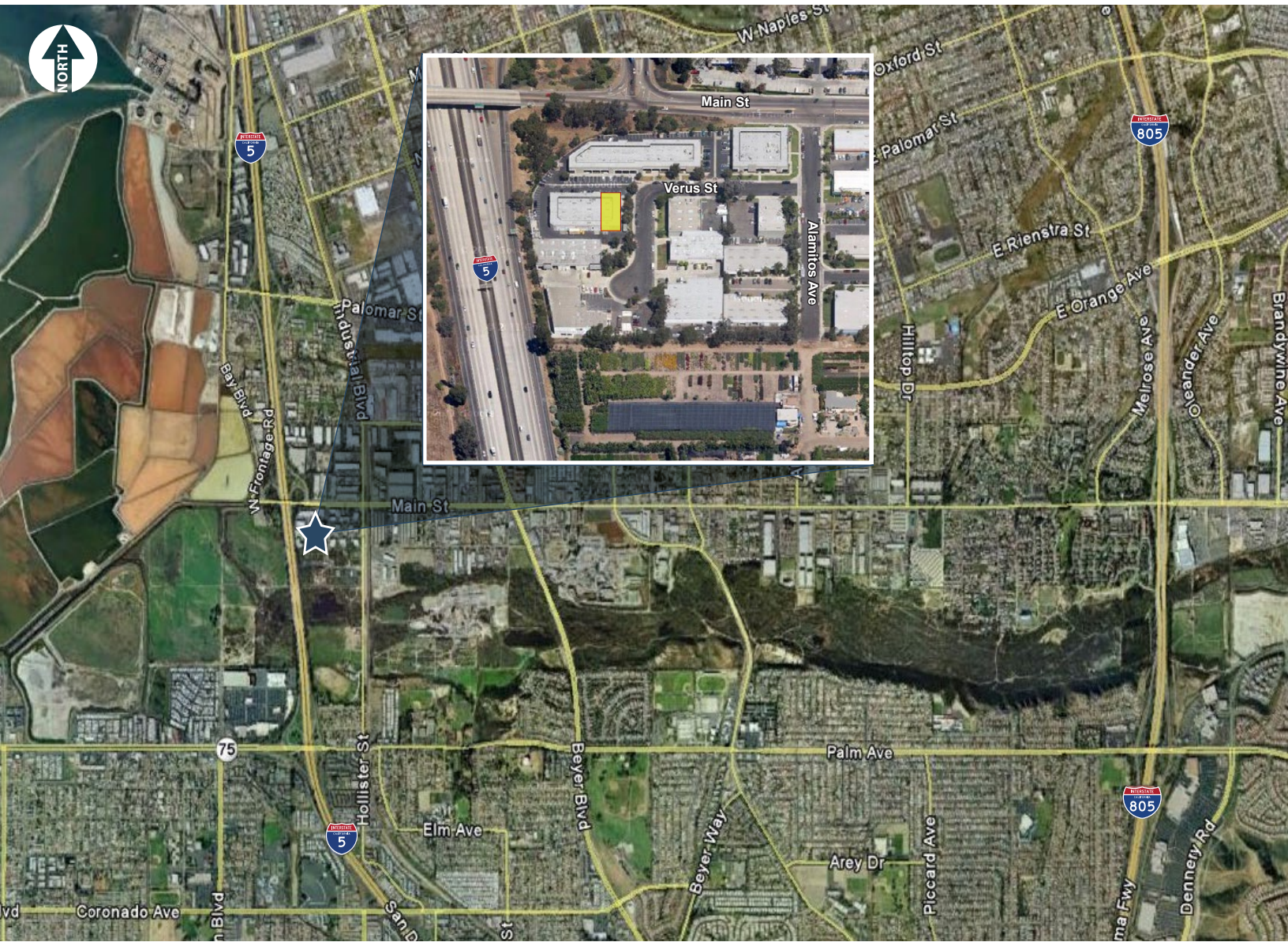
Licensed as a Real Estate Broker and a Salesperson by the CA Bur of Real Estate. The information contained herein has been obtained from sources we deem reliable. While we have no reason to doubt its accuracy, we do not guarantee it. ©2018 Voit Real Estate Services, Inc. All Rights Reserved. Real People. Real Solutions.® is a registered trademark of Voit Real Estate Services.

NORSOUTH INDUSTRIAL PARK

2222 VERUS STREET | SAN DIEGO, CA 92154

Voit

REAL ESTATE SERVICES



CURT PERRY | Senior Associate | 858.458.3304 | cperry@voitco.com | Lic. #01466077 | 4180 La Jolla Village Drive, Suite 100, La Jolla, CA 92037

Licensed as a Real Estate Broker and a Salesperson by the CA Bur of Real Estate. The information contained herein has been obtained from sources we deem reliable. While we have no reason to doubt its accuracy, we do not guarantee it. ©2018 Voit Real Estate Services, Inc. All Rights Reserved. Real People. Real Solutions.® is a registered trademark of Voit Real Estate Services.