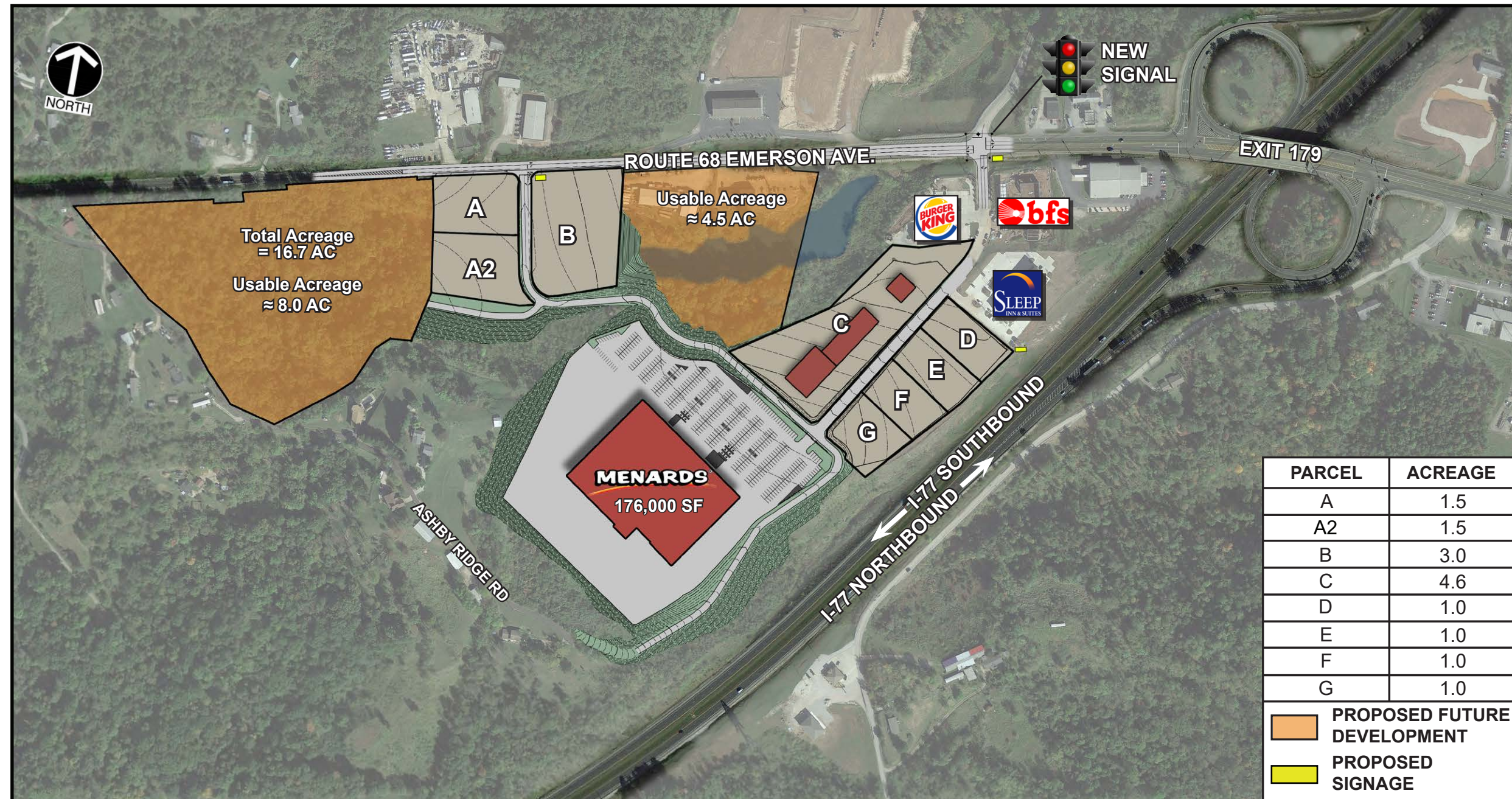


EMERSON COMMONS ANCHORED BY MENARDS



FOR MORE INFORMATION PLEASE CONTACT:

Petroplus & Associates, Inc.

Parry Petroplus, Broker

Office: (304) 284-5000

Cell: (304) 288-0654

parry@petroplus.com



Parkersburg, WV
TRAFFIC COUNTS



Traffic Count Data	
I-77	31,392
Route 68/Emerson Ave.	12,064

Emerson Commons
DEMOGRAPHICS

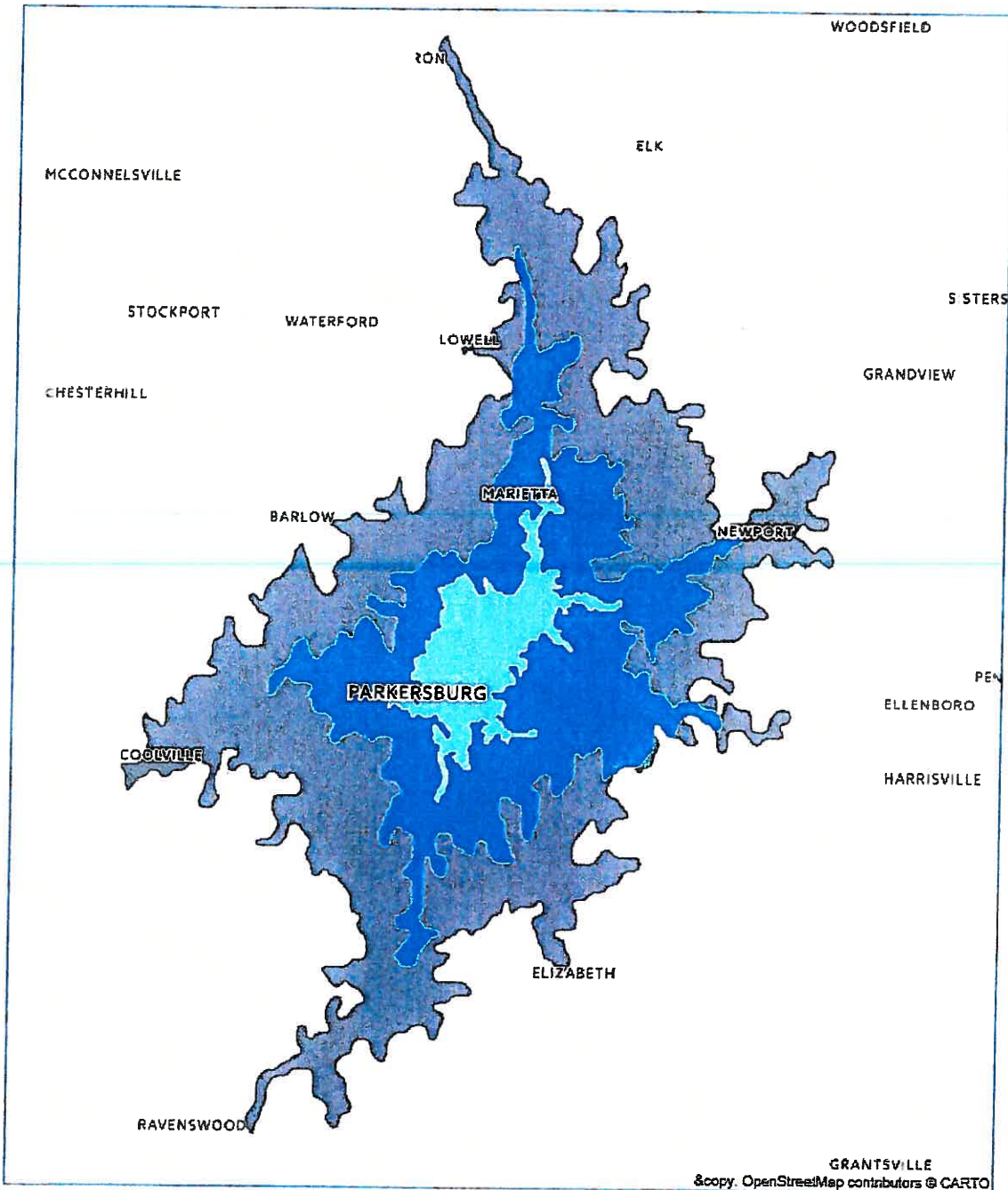
Radius Report

10 Minute Drive Time

20 Minute Drive Time

30 Minute Drive Time

Map of 10, 20, and 30 minutes around 6650 Emerson Ave, Parkersburg, WV 26104



Basemap: Mapbox & OpenStreetMap

Demographics

Population

	10 minutes	20 minutes	30 minutes
Population	30,100	102,004	135,877

Source: U.S. Census Bureau, 2011-2015 American Community Survey, Tables B01003

Age Breakdown

	10 minutes		20 minutes		30 minutes	
Total Population	30,100		102,004		135,877	
9 & under	3,558	12%	11,991	12%	15,437	11%
10 to 19	3,320	11%	12,018	12%	16,128	12%
20 to 29	3,438	11%	12,256	12%	15,987	12%
30 to 39	3,671	12%	12,094	12%	16,348	12%
40 to 49	4,022	13%	13,073	13%	17,875	13%
50 to 59	4,380	15%	15,144	15%	20,495	15%
60 to 69	3,946	13%	12,594	12%	16,958	12%
70 & over	3,763	13%	12,831	13%	16,645	12%

Source: U.S. Census Bureau, 2011-2015 American Community Survey, Tables B01001

Race & Ethnicity

	10 minutes		20 minutes		30 minutes	
Total Population	30,100		102,004		135,877	
White	28,596	95%	96,519	95%	128,938	95%
Black	311	1%	1,397	1%	1,936	1%
American Indian	62	0%	183	0%	206	0%
Asian	183	1%	732	1%	929	1%
Pacific Islander	28	0%	30	0%	36	0%
Other race	46	0%	114	0%	124	0%
Two or more races	529	2%	1,849	2%	2,283	2%
Hispanic	342	1%	1,175	1%	1,422	1%

Source: U.S. Census Bureau, 2011-2015 American Community Survey, Tables B03002

Age by Gender Breakdown

	10 minutes		20 minutes		30 minutes	
Total Population	30,100		102,004		135,877	
Total Male	14,579	48%	48,994	48%	66,545	49%
Male - 9 & under	1,917	6%	6,346	6%	8,019	6%
Male - 10 to 19	1,651	5%	6,155	6%	8,290	6%
Male - 20 to 29	1,730	6%	5,817	6%	8,086	6%
Male - 30 to 39	1,942	6%	6,315	6%	8,724	6%
Male - 40 to 49	1,878	6%	6,176	6%	8,636	6%
Male - 50 to 59	2,142	7%	7,326	7%	10,016	7%
Male - 60 to 69	1,819	6%	5,734	6%	7,891	6%
Male - 70 & over	1,497	5%	5,121	5%	6,880	5%
Total Female	15,521	52%	53,009	52%	69,331	51%
Female - 9 & under	1,640	5%	5,645	6%	7,418	5%
Female - 10 to 19	1,669	6%	5,862	6%	7,838	6%
Female - 20 to 29	1,707	6%	6,438	6%	7,901	6%
Female - 30 to 39	1,729	6%	5,778	6%	7,624	6%
Female - 40 to 49	2,144	7%	6,897	7%	9,238	7%
Female - 50 to 59	2,237	7%	7,817	8%	10,478	8%
Female - 60 to 69	2,126	7%	6,860	7%	9,067	7%
Female - 70 & over	2,266	8%	7,709	8%	9,765	7%

Source: U.S. Census Bureau, 2011-2015 American Community Survey, Tables B01001, B01003

Income

	10 minutes		20 minutes		30 minutes	
Median Household Income (in 2015 inflation adjusted dollars)	\$40,371		\$39,652		\$41,861	
Households	12,950		43,035		55,882	
Less than \$25,000	4,096	32%	14,218	33%	17,177	31%
\$25,000 to \$49,999	3,794	29%	11,808	27%	15,326	27%
\$50,000 to \$74,999	2,076	16%	7,034	16%	9,578	17%
\$75,000 to \$99,999	1,374	11%	4,545	11%	6,033	11%
\$100,000 to \$199,999	1,388	11%	4,642	11%	6,699	12%
\$200,000 or more	220	2%	786	2%	1,066	2%

Source: U.S. Census Bureau, 2011-2015 American Community Survey, Tables B19001, B19013

Households

	10 minutes		20 minutes		30 minutes	
Total Households	12,950		43,035		55,882	
Family households	7,821	60%	26,617	62%	35,720	64%
Married couple family	5,566	43%	19,365	45%	26,945	48%
With own children under 18	1,796	14%	6,237	14%	8,617	15%
Other family	2,255	17%	7,251	17%	8,775	16%
Single male householder with own children under 18	378	3%	1,084	3%	1,293	2%
Single female householder with own children under 18	850	7%	2,926	7%	3,454	6%
Nonfamily households	5,129	40%	16,417	38%	20,161	36%

Source: U.S. Census Bureau, 2011-2015 American Community Survey, Tables B11001, B11003

Educational Attainment

	10 minutes		20 minutes		30 minutes	
Total Population 25 years & Over	21,477		71,487		96,025	
No high school diploma	2,281	11%	8,011	11%	10,629	11%
High school graduate or equal	8,016	37%	27,011	38%	37,385	39%
Some college	4,738	22%	15,814	22%	20,837	22%
Associate's degree	2,060	10%	6,976	10%	9,292	10%
Bachelor's degree	2,654	12%	8,878	12%	11,618	12%
Masters, doctorate, professional	1,725	8%	4,796	7%	6,262	7%

Source: U.S. Census Bureau, 2011-2015 American Community Survey, Tables B15002

Employment Status

	10 minutes		20 minutes		30 minutes	
Total Population 16 years & Over	24,489		83,068		111,020	
In labor force	13,828	56%	46,711	56%	61,958	56%
Civilian labor force	13,804	56%	46,672	56%	61,908	56%
Employed	12,777	52%	42,725	51%	56,856	51%
Unemployed	1,026	4%	3,947	5%	5,052	5%
In armed forces	24	0%	39	0%	49	0%
Not in labor force	10,660	44%	36,356	44%	49,062	44%

Source: U.S. Census Bureau, 2011-2015 American Community Survey, Tables B23025

Housing Units

	10 minutes		20 minutes		30 minutes	
Housing Units	14,551		47,806		62,203	
Occupied Housing Units	12,950		43,035		55,882	
Owner occupied units	8,777	68%	28,994	67%	39,831	71%
Renter occupied units	4,173	32%	14,040	33%	16,050	29%

Source: U.S. Census Bureau, 2011-2015 American Community Survey, Tables B25024, B25003

Housing Unit Value

	10 minutes		20 minutes		30 minutes	
Owner Occupied Housing Units	8,777		28,994		39,831	
Less than \$100,000	4,489	51%	14,164	49%	18,407	46%
\$100,000 to \$199,999	3,158	36%	10,611	37%	14,964	38%
\$200,000 to \$299,999	854	10%	2,901	10%	4,352	11%
\$300,000 to \$399,999	191	2%	853	3%	1,313	3%
\$400,000 to \$499,999	21	0%	217	1%	337	1%
\$500,000 or more	61	1%	246	1%	455	1%

Source: U.S. Census Bureau, 2011-2015 American Community Survey, Tables B25075