



## Bonaventure I & II

124 Verdae Boulevard, Greenville, SC 29607

## Office Space

For Lease  $\pm$ 2,171 - 4,677 SF  
**\$21.50 RSF | Full Service Gross**

### Scott Jones, SIOR

Broker | Shareholder  
864 678 5921  
sjones@naief.com

### John Stathakis, II

Broker  
864 678 5931  
jstathakis@naief.com





**BONAVENTURE I & II** | STRATEGICALLY LOCATED OFF I-85 AND SURROUNDED BY LOCAL SHOPPING DESTINATIONS, RESTAURANTS AND WITHIN CLOSE PROXIMITY TO WOODRUFF ROAD, HAYWOOD MALL AND DOWNTOWN GREENVILLE. **PARKING RATIO** - >4:1,000 RSF | **LEASE RATE** - \$21.50/RSF (FULL SERVICE GROSS)

### VERDAE MARKETFAIR

- |                |                     |                        |
|----------------|---------------------|------------------------|
| PLANET FITNESS | OFFICE DEPOT        | SUBWAY                 |
| OLIVE GARDEN   | GREENFIELD'S BAGELS | MR. K'S USED BOOKSTORE |
| ARBY'S         | STEIN MART          | GAMESTOP               |
| BI-LO          | LEBO'S              | GNC                    |

### BONAVENTURE I & II

- |                          |  |
|--------------------------|--|
| UPSTATE ALLIANCE         | <b>BII   SUITE 200 - LOBBY LEVEL</b>           |
| MTC FEDERAL CREDIT UNION | <b>BII   SUITE 302 &amp; 303 - THIRD FLOOR</b> |
| RECRUITING SOLUTIONS     | <b>BII   SUITE 403 - FOURTH FLOOR</b>          |
| SOUTHERN FIRST BANK      | <b>BII   SUITE 504 - FIFTH FLOOR</b>           |

### LAURENS ROAD RETAIL

- |            |                  |            |
|------------|------------------|------------|
| PETSMART   | OLD TIME POTTERY | MCDONALD'S |
| STARBUCKS  | DOLLAR TREE      | TACO BELL  |
| MICHAELS   | GUITAR CENTER    | BOJANGLES  |
| BURLINGTON | SKY ZONE         | PINNACLE   |

# Suite 200

Lobby Level

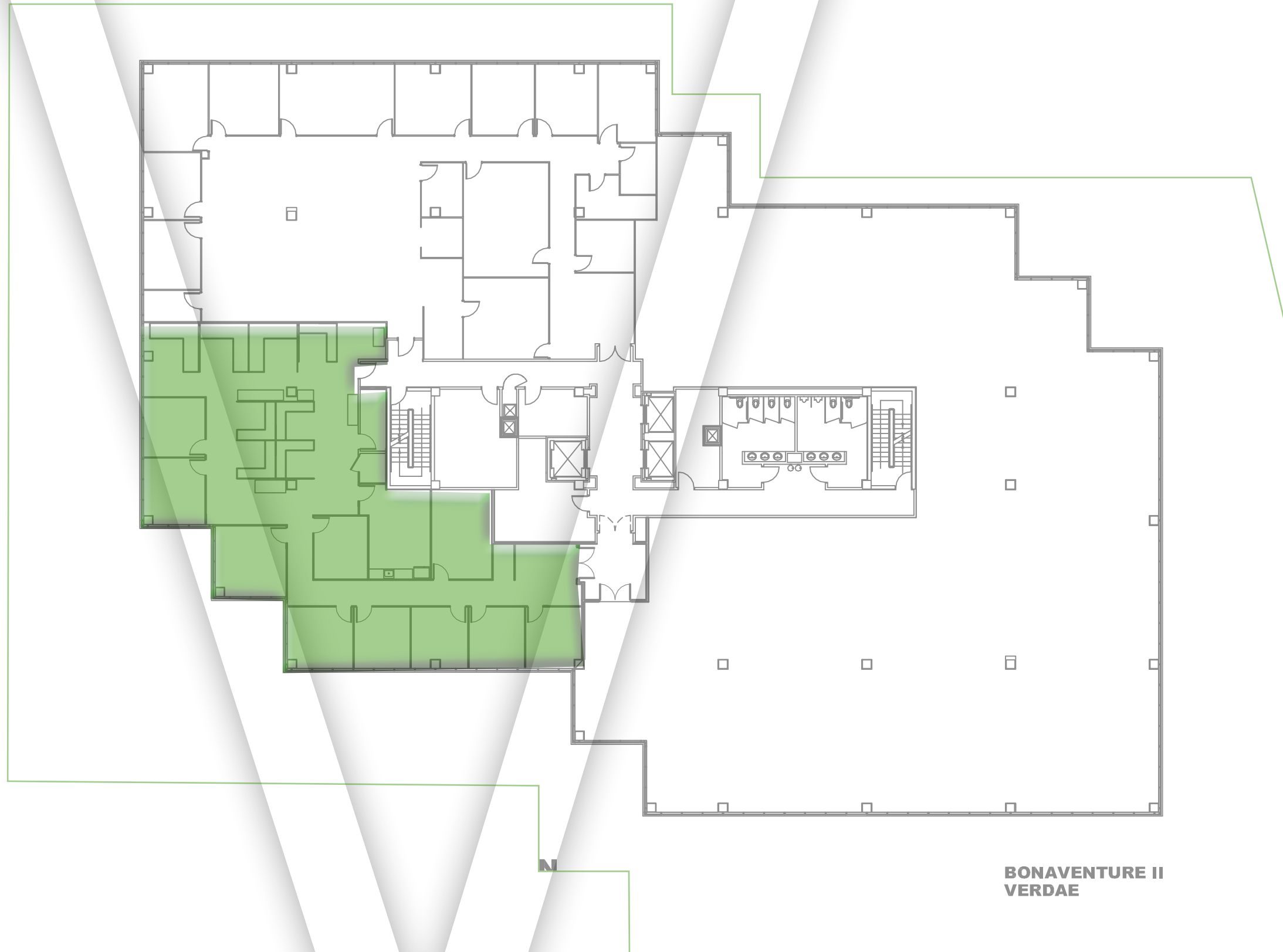
**±4,677 SF**



# Suite 302

Third Floor

**±4,623 SF**



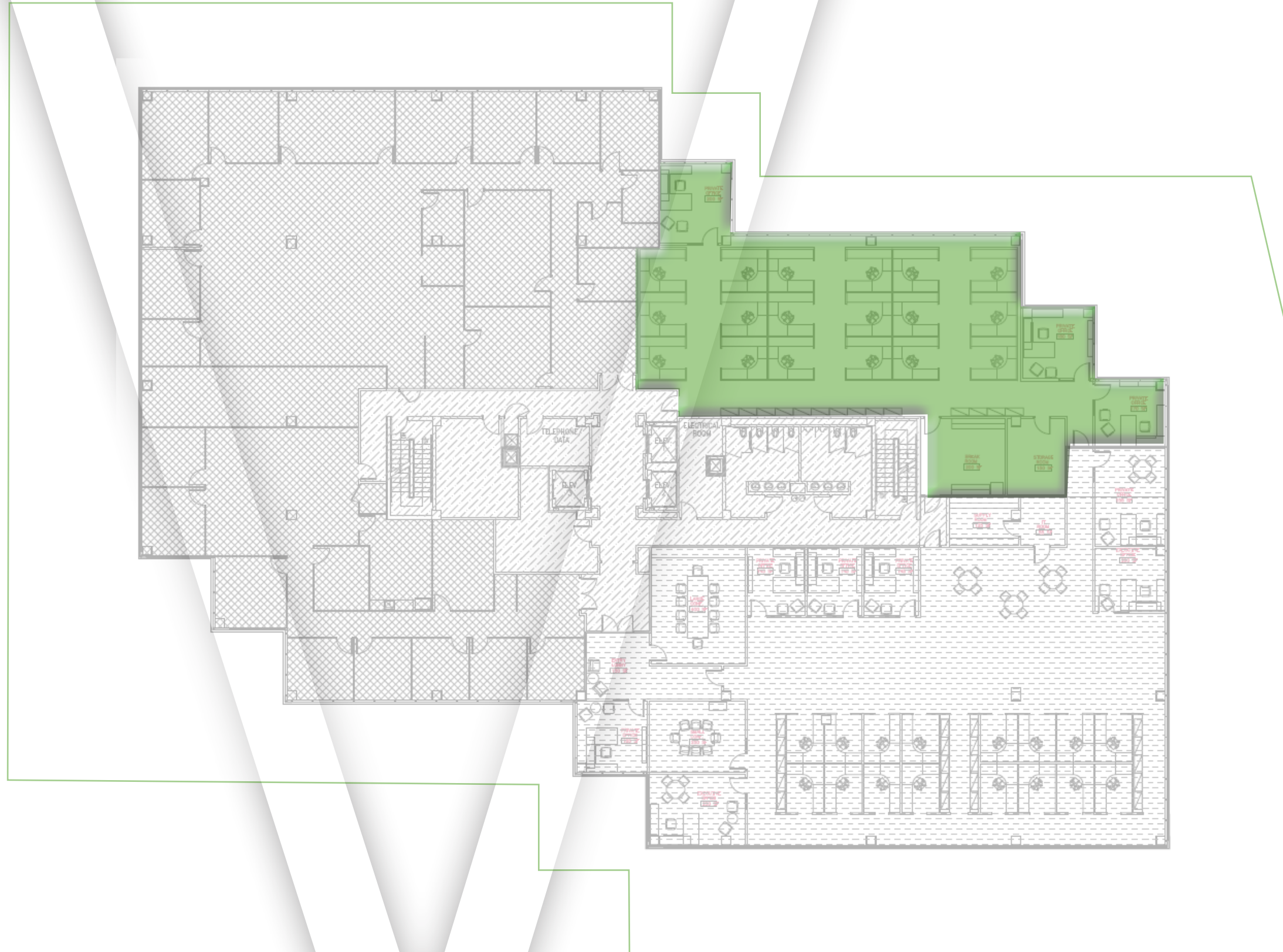
BONAVENTURE II  
VERDAE



# Suite 303

Third Floor

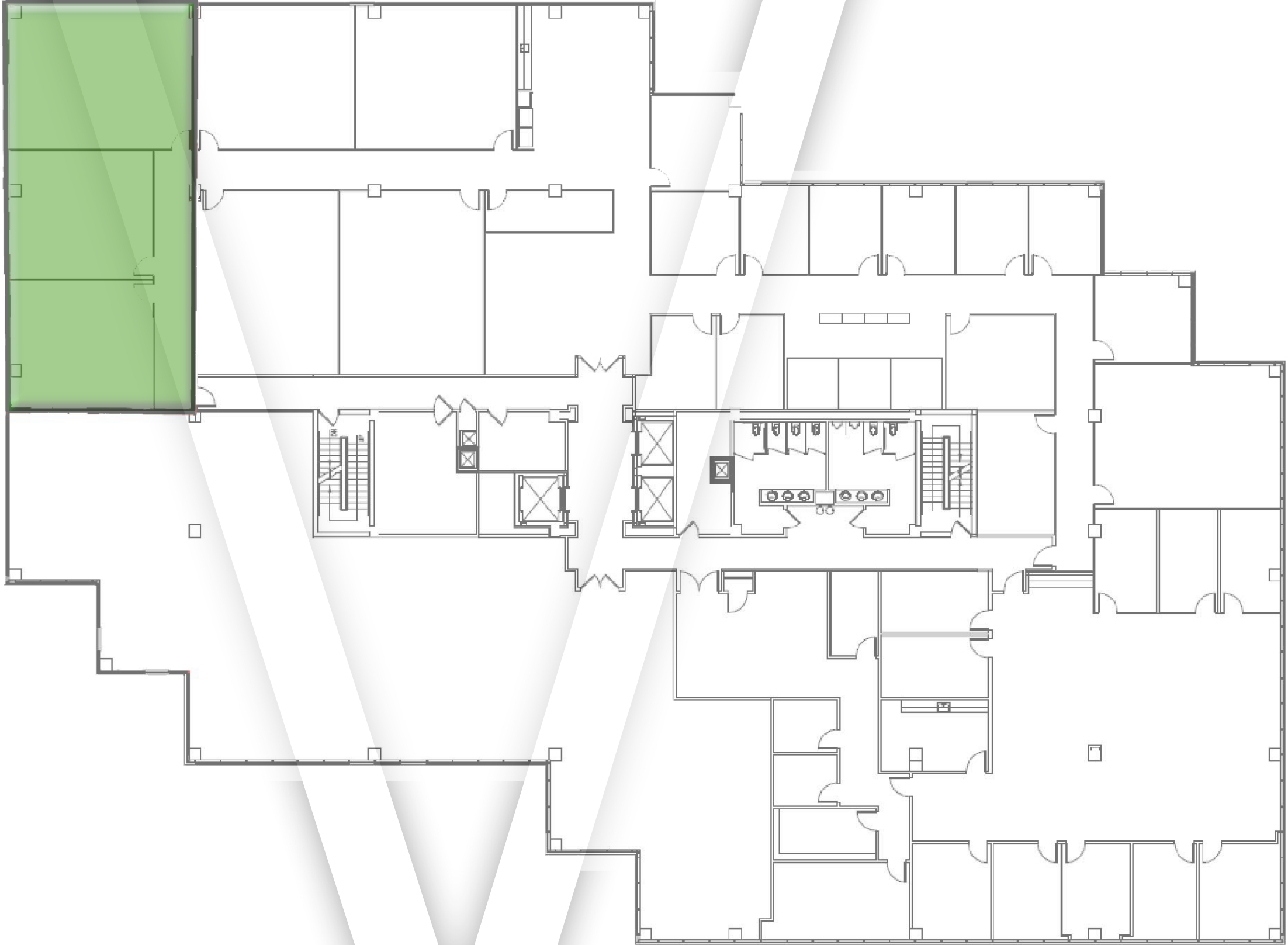
**±4,359 SF**



# Suite 403

Fourth Floor

**±2,171 SF**

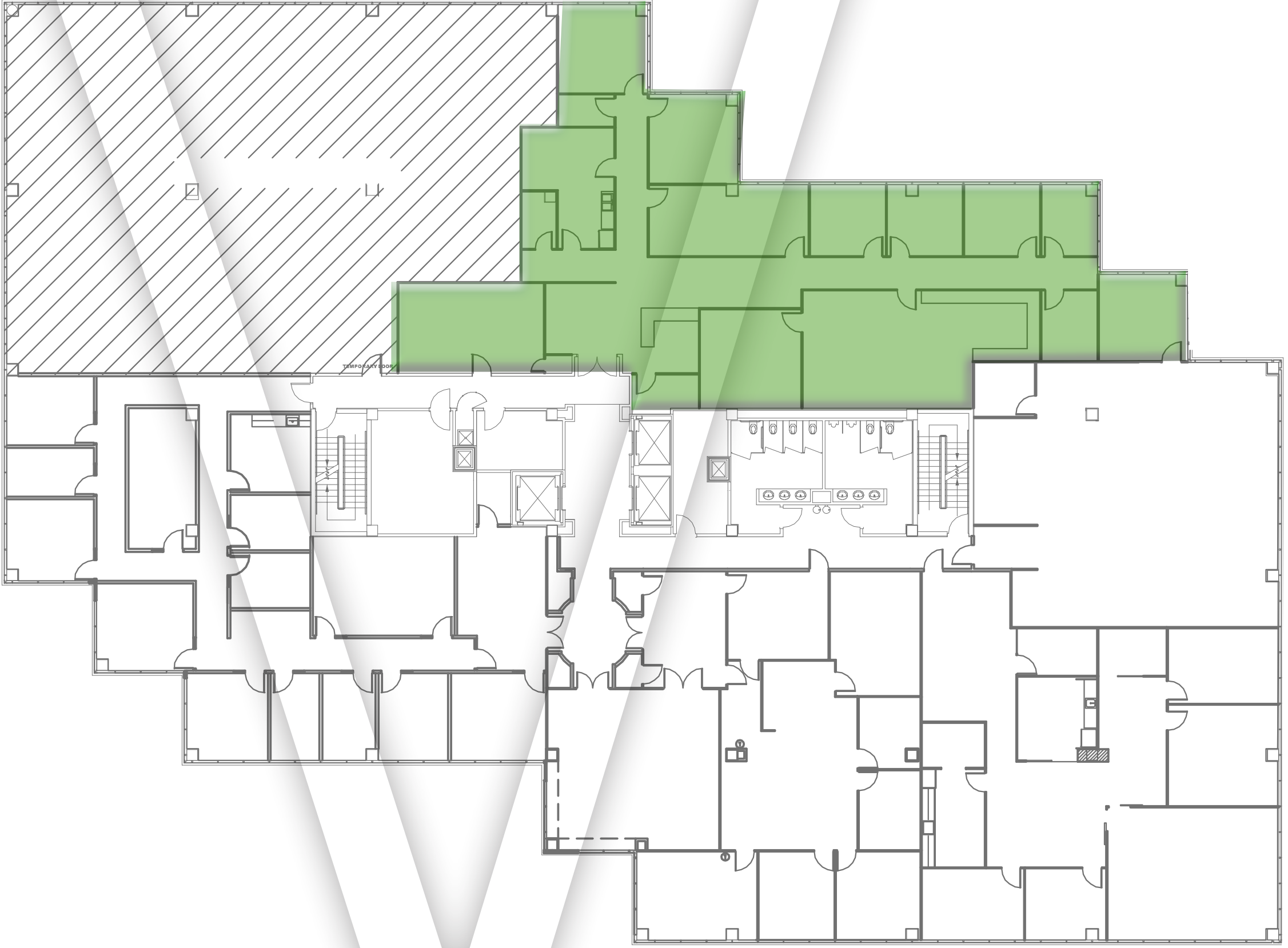


NO WARRANTY OR REPRESENTATION, EXPRESS OR IMPLIED, IS MADE AS TO THE ACCURACY OF THE INFORMATION CONTAINED HEREIN, AND THE SAME IS SUBMITTED SUBJECT TO ERRORS, OMISSIONS, CHANGE OF PRICE, RENTAL OR OTHER CONDITIONS, PRIOR SALE, LEASE OR FINANCING, OR WITHDRAWAL WITHOUT NOTICE, AND OF ANY SPECIAL LISTING CONDITIONS IMPOSED BY OUR PRINCIPALS NO WARRANTIES OR REPRESENTATIONS ARE MADE AS TO THE CONDITION OF THE PROPERTY OR ANY HAZARDS CONTAINED THEREIN ARE ANY TO BE IMPLIED.

# Suite 504

Fifth Floor

**±4,293 SF**



NO WARRANTY OR REPRESENTATION, EXPRESS OR IMPLIED, IS MADE AS TO THE ACCURACY OF THE INFORMATION CONTAINED HEREIN, AND THE SAME IS SUBMITTED SUBJECT TO ERRORS, OMISSIONS, CHANGE OF PRICE, RENTAL OR OTHER CONDITIONS, PRIOR SALE, LEASE OR FINANCING, OR WITHDRAWAL WITHOUT NOTICE, AND OF ANY SPECIAL LISTING CONDITIONS IMPOSED BY OUR PRINCIPALS NO WARRANTIES OR REPRESENTATIONS ARE MADE AS TO THE CONDITION OF THE PROPERTY OR ANY HAZARDS CONTAINED THEREIN ARE ANY TO BE IMPLIED.