



AVAILABLE
Knights Road Shopping Center
4000 WOODHAVEN ROAD, PHILADELPHIA, PA

PROPERTY FEATURES

- AVAILABLE RETAIL SPACE:
 - Inline space: 1,000-3,063 SF
 - Endcap: 3,167 SF
 - Pad Sites: 9,000 SF and 12,000 SF
- Join Rite Aid, Save A Lot, Empire Beauty School, and other local and national tenants
- Convenient access to Woodhaven Road and I-95

SURROUNDING RETAILERS INCLUDE...



The foregoing information was furnished to us by sources which we deem to be reliable, but no warranty or representation is made as to the accuracy thereof. Subject to correction of errors, omissions, change of price, prior sale or withdrawal from market without notice. The aerial image is intended to provide a general outline of the subject property. It is not a survey nor should it be relied upon for purposes of determining property lines or boundaries.



(WIDTH VARIES) (LR 1029-2) (SR 0063)

EASTBOUND

NORMANDY ROAD

(15-26-5)



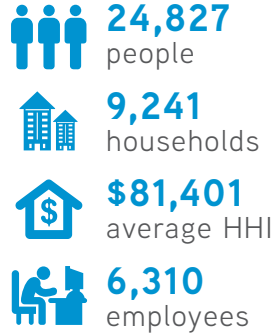
SITE PLAN

- 1. Rite Aid
- 2. Third Financial CU
- 3. BP/Dunkin Donuts
- 4. Joe Santuccis Restaurant
- 5-7. Save A Lot
- 8. Quest Diagnostics
- 9. **3,063 SF AVAILABLE**
- 10. Empire Beauty
- 11. Barber Shop
- 12. Dry Cleaners
- 13. Chrissy Nails
- 14. **1,000 SF AVAILABLE**
- 15. Cingular Wireless
- 16. Asian Chopsticks
- 17. Fresh Works
- 18-19. **3,167 SF AVAILABLE**

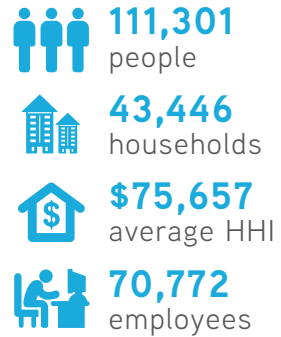
(LR 67338) KNIGHTS ROAD (16,450 ADT)

DEMOGRAPHICS

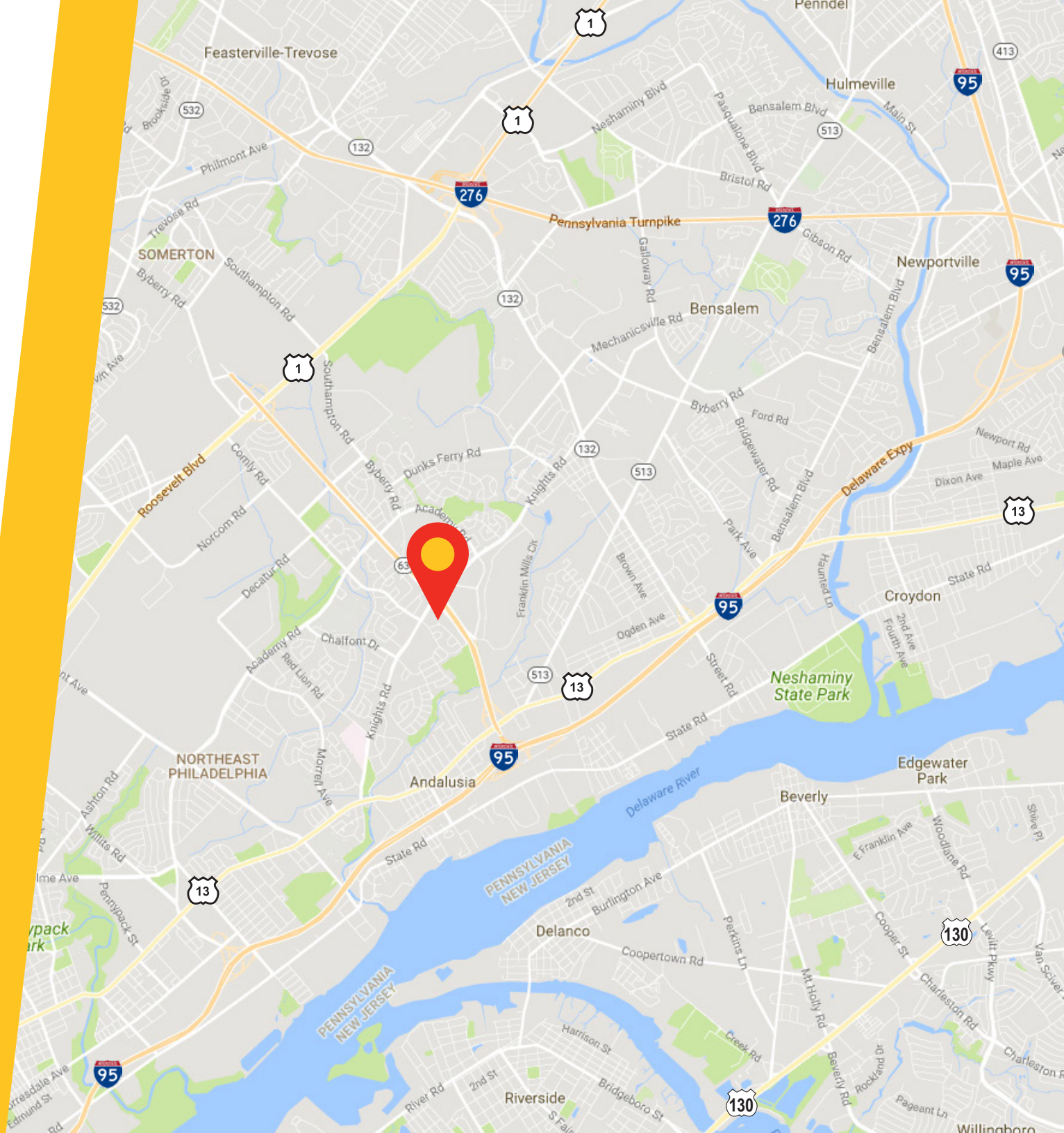
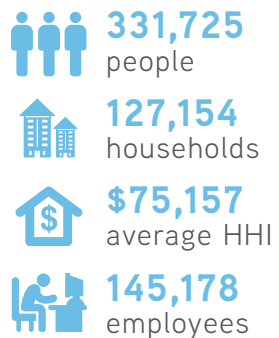
WITHIN 1 MILE



WITHIN 3 MILES



WITHIN 5 MILES





CONTACT US

COLLIERS INTERNATIONAL
 Ten Penn Center
 1801 Market Street, Suite 500
 Philadelphia, PA 19103
www.colliers.com/philadelphia

TODD SUSSMAN
 SENIOR VICE PRESIDENT
 +1 215 928 7575
todd.sussman@colliers.com

JOSH GOLDFINE
 VICE PRESIDENT
 +1 215 928 7565
josh.goldfine@colliers.com