

GROWERS square

THE HEART OF WALNUT CREEK

FULL BUILDING
OPPORTUNITY

1656 NORTH CALIFORNIA BOULEVARD, WALNUT CREEK | ±22,916 SF



FOR MORE INFORMATION
PLEASE CONTACT

BRECK LUTZ BLUTZ@NGKF.COM
925.974.0109 | CA RE LICENSE #00936859

KNUTE BUCKLEW KBUCKLEW@NGKF.COM
925.974.0240 | CA RE LICENSE #01332731

DANNY BARTZ DBARTZ@NGKF.COM
925.974.0231 | CA RE LICENSE #01971819

WWW.GROWERS-SQUARE.COM



THE INFORMATION CONTAINED HEREIN HAS BEEN OBTAINED FROM SOURCES DEEMED RELIABLE BUT HAS NOT BEEN VERIFIED AND NO GUARANTEE, WARRANTY OR REPRESENTATION, EITHER EXPRESS OR IMPLIED, IS MADE WITH RESPECT TO SUCH INFORMATION. TERMS OF SALE OR LEASE AND AVAILABILITY ARE SUBJECT TO CHANGE OR WITHDRAWAL WITHOUT NOTICE.



GROWERS square

THE HEART OF WALNUT CREEK

FULL BUILDING
OPPORTUNITY



FREE
STANDING
BUILDING

HIGH IDENTITY
@ CORNER OF
N CALIFORNIA &
CIVIC DRIVE
(60K DAILY CAR COUNT)

6
MINUTE
WALK TO
WC BART

ADJACENT
TO ALL
WALNUT
CREEK
RETAIL

EFFICIENT
FLOOR
PLATE

STRUCTURED
& METERED
PARKING
DIRECTLY
ADJACENT

WALNUT CREEK



1656

N. CALIFORNIA BLVD. 29K+ ADT

CIVIC DRIVE 31K+ ADT

FOR MORE INFORMATION
PLEASE CONTACT

BRECK LUTZ BLUTZ@NGKF.COM
925.974.0109 | CA RE LICENSE #00936859

KNUTE BUCKLEW KBUCKLEW@NGKF.COM
925.974.0240 | CA RE LICENSE #01332731

DANNY BARTZ DBARTZ@NGKF.COM
925.974.0231 | CA RE LICENSE #01971819

WWW.GROWERS-SQUARE.COM



THE INFORMATION CONTAINED HEREIN HAS BEEN OBTAINED FROM SOURCES DEEMED RELIABLE BUT HAS NOT BEEN VERIFIED AND NO GUARANTEE, WARRANTY OR REPRESENTATION, EITHER EXPRESS OR IMPLIED, IS MADE WITH RESPECT TO SUCH INFORMATION. TERMS OF SALE OR LEASE AND AVAILABILITY ARE SUBJECT TO CHANGE OR WITHDRAWAL WITHOUT NOTICE.



GROWERS square

THE HEART OF WALNUT CREEK

FULL BUILDING
OPPORTUNITY

GROWERS SQUARE IS PERFECTLY LOCATED ON THE HIGH IDENTITY CORNERS OF NORTH CALIFORNIA BLVD AND CIVIC DRIVE. THE PROPERTY IS WITHIN THE **DOWNTOWN WALNUT CREEK DINING & RETAIL CORE** AND A SHORT WALK TO THE WALNUT CREEK BART STATION



COMPLETELY RE-IMAGINED PROJECT PLAZA
AND ENHANCED TENANT IDENTITY



FOR MORE INFORMATION
PLEASE CONTACT

BRECK LUTZ BLUTZ@NGKF.COM
925.974.0109 | CA RE LICENSE #00936859

KNUTE BUCKLEW KBUCKLEW@NGKF.COM
925.974.0240 | CA RE LICENSE #01332731

DANNY BARTZ DBARTZ@NGKF.COM
925.974.0231 | CA RE LICENSE #01971819

WWW.GROWERS-SQUARE.COM



THE INFORMATION CONTAINED HEREIN HAS BEEN OBTAINED FROM SOURCES DEEMED RELIABLE BUT HAS NOT BEEN VERIFIED AND NO GUARANTEE, WARRANTY OR REPRESENTATION, EITHER EXPRESS OR IMPLIED, IS MADE WITH RESPECT TO SUCH INFORMATION. TERMS OF SALE OR LEASE AND AVAILABILITY ARE SUBJECT TO CHANGE OR WITHDRAWAL WITHOUT NOTICE.

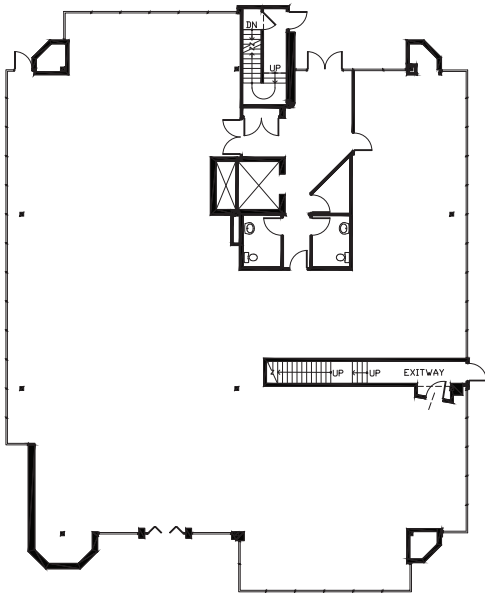


GROWERS square

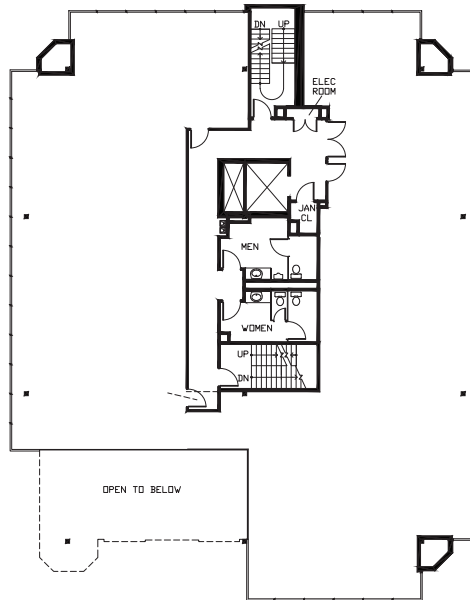
THE HEART OF WALNUT CREEK

FULL BUILDING
OPPORTUNITY

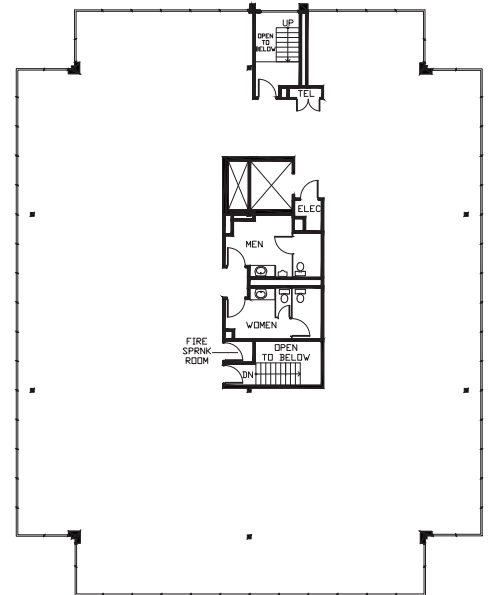
FLOOR PLANS 1656 N. CALIFORNIA BLVD



FLOOR 1



FLOOR 2



FLOOR 3

FOR MORE INFORMATION
PLEASE CONTACT

BRECK LUTZ BLUTZ@NGKF.COM
925.974.0109 | CA RE LICENSE #00936859

KNUTE BUCKLEW KBUCKLEW@NGKF.COM
925.974.0240 | CA RE LICENSE #01332731

DANNY BARTZ DBARTZ@NGKF.COM
925.974.0231 | CA RE LICENSE #01971819

WWW.GROWERS-SQUARE.COM



THE INFORMATION CONTAINED HEREIN HAS BEEN OBTAINED FROM SOURCES DEEMED RELIABLE BUT HAS NOT BEEN VERIFIED AND NO GUARANTEE, WARRANTY OR REPRESENTATION, EITHER EXPRESS OR IMPLIED, IS MADE WITH RESPECT TO SUCH INFORMATION. TERMS OF SALE OR LEASE AND AVAILABILITY ARE SUBJECT TO CHANGE OR WITHDRAWAL WITHOUT NOTICE.

