

920 TO 5,295 SQUARE FEET AVAILABLE

# 1733 Park Street

NAPERVILLE | ILLINOIS



office  
space for  
lease

- 920 TO 5,295 SF
- NEWLY RENOVATED LOBBY WITH SKYLIGHT
- NEWLY RENOVATED BATHROOMS
- PROXIMITY TO FREEDOM COMMONS, DOWNTOWN NAPERVILLE, LODGING, DAYCARE, RESTAURANTS AND MANY AMENITIES
- ACCESS TO I-88
- ADJACENT TO PARK AND GREEN SPACE
- LOWER DUPAGE COUNTY TAXES
- WELL LANDSCAPED GROUNDS

**Patrick Kiefer**

630 693 0670  
pkiefer@hiffman.com

**Ryan Maher**

630 693 0677  
rmaher@hiffman.com



3.5:1,000  
PARKING RATIO



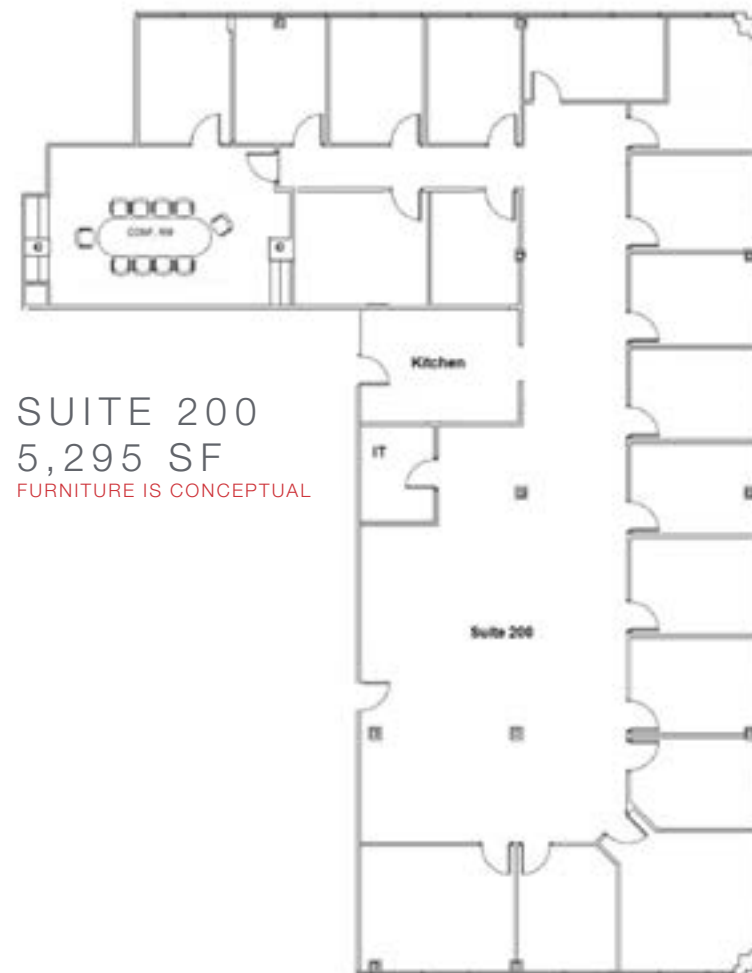
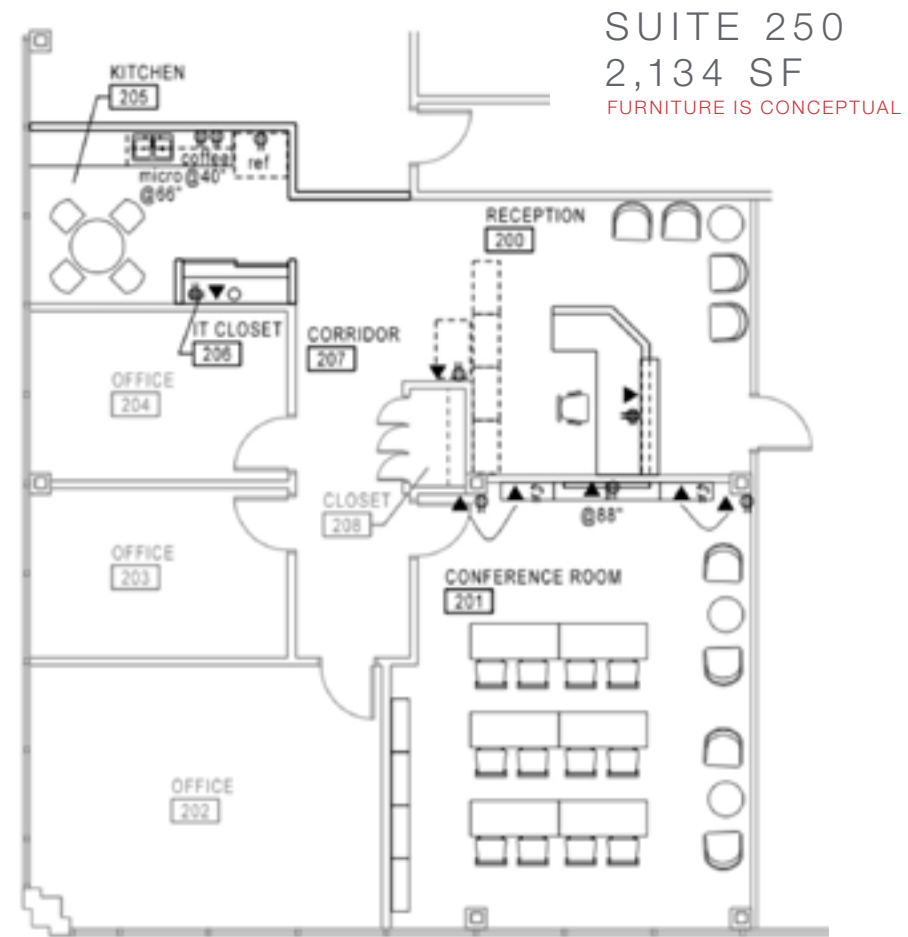
920 - 5,295 SF



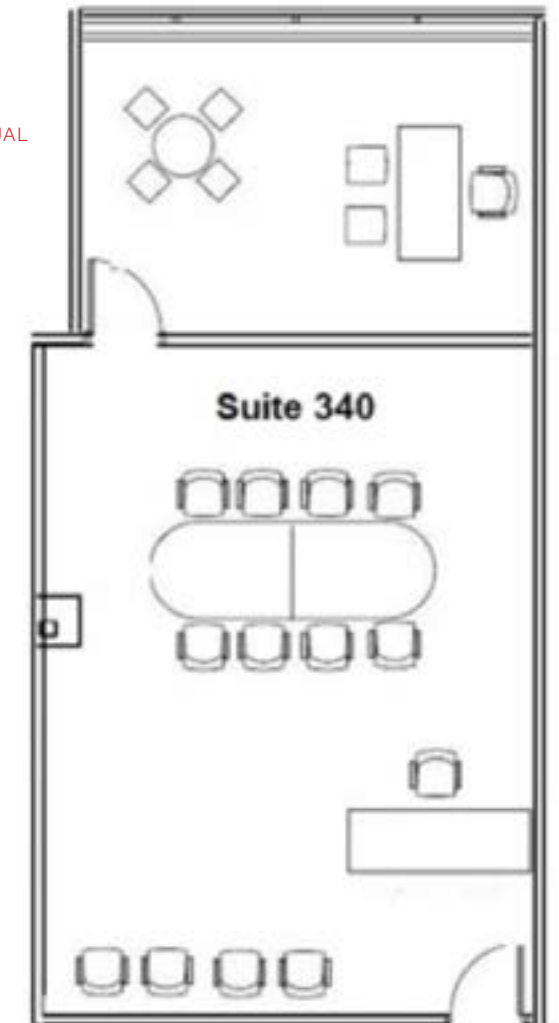
\$21.00 PSF  
GROSS ASKING RENT



# 1733 Park Street



SUITE 340  
920 SF  
FURNITURE IS CONCEPTUAL





OFFICE SPACE AVAILABLE IN NAPERVILLE

1733 Park Street



Patrick Kiefer  
630 693 0670  
pkiefer@hiffman.com

Ryan Maher  
630 693 0677  
rmaher@hiffman.com