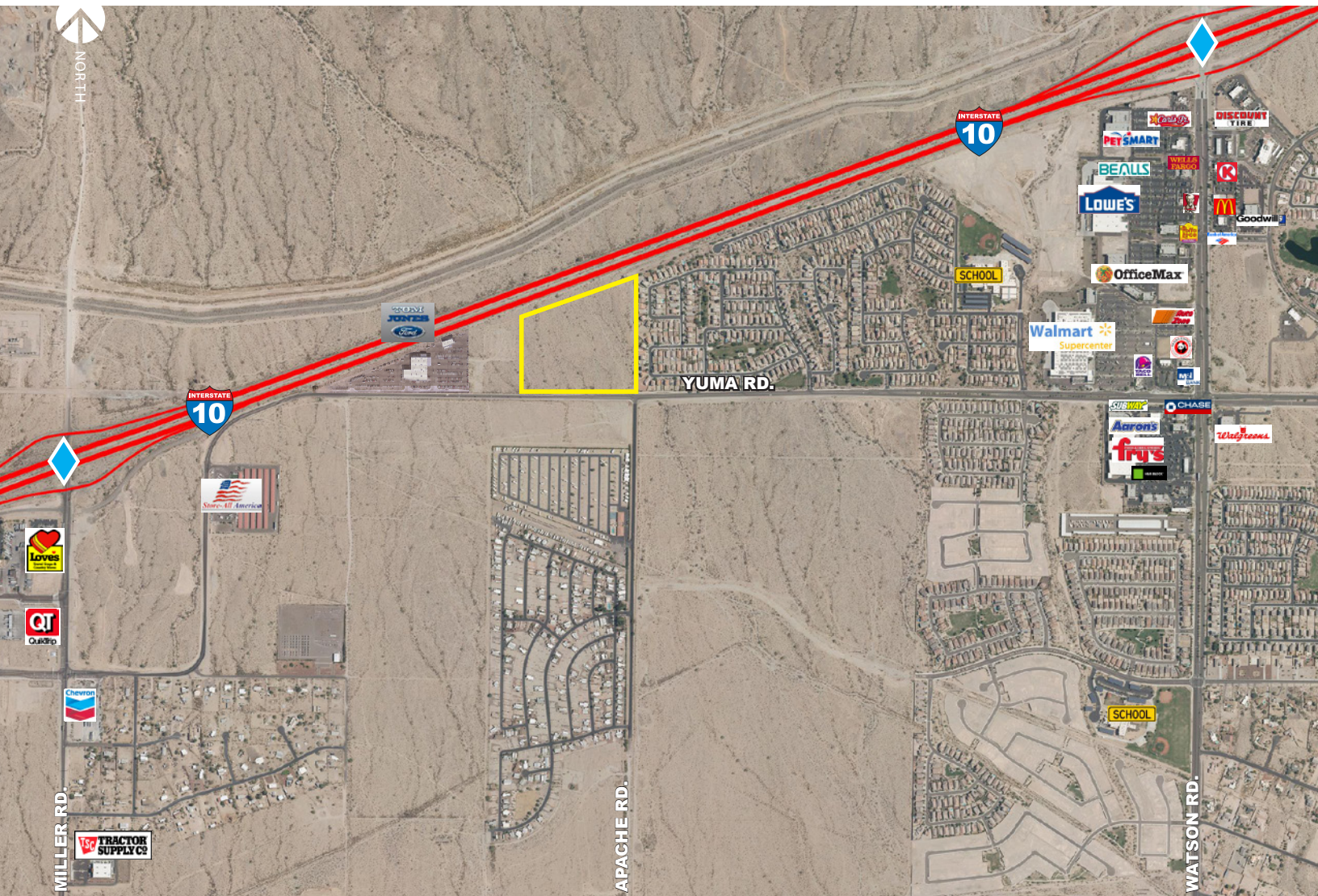


# NWC of YUMA & Apache Road Buckeye, Arizona

## FOR SALE: 23.7 ACRES



[www.learizona.com](http://www.learizona.com)



FOR MORE INFORMATION  
PLEASE CONTACT:

**MARK LINSALATA, SIOR**  
PRINCIPAL  
602.912.3539  
[mlinsalata@learizona.com](mailto:mlinsalata@learizona.com)

**NATE BUBECK**  
PRINCIPAL  
602.954.3767  
[nbubeck@learizona.com](mailto:nbubeck@learizona.com)

3200 East Camelback Road  
Suite 100  
Phoenix, Arizona 85018  
602.956.7777

### FEATURES:

- Total site:  $\pm 23.7$  acres
- Divisible to  $\pm 1.0$  acres
- Proximity to over 700,000 SF of retail product
- Zoned - CMP - Employment (Community Master Plan)
- Part of the Sundance Master Plan
- Excellent freeway visibility
- Water and Sewer capacity is reserved under the Sundance CMP and stubbed to the site
- **\$6,200,000 (\$6.00/SF)**



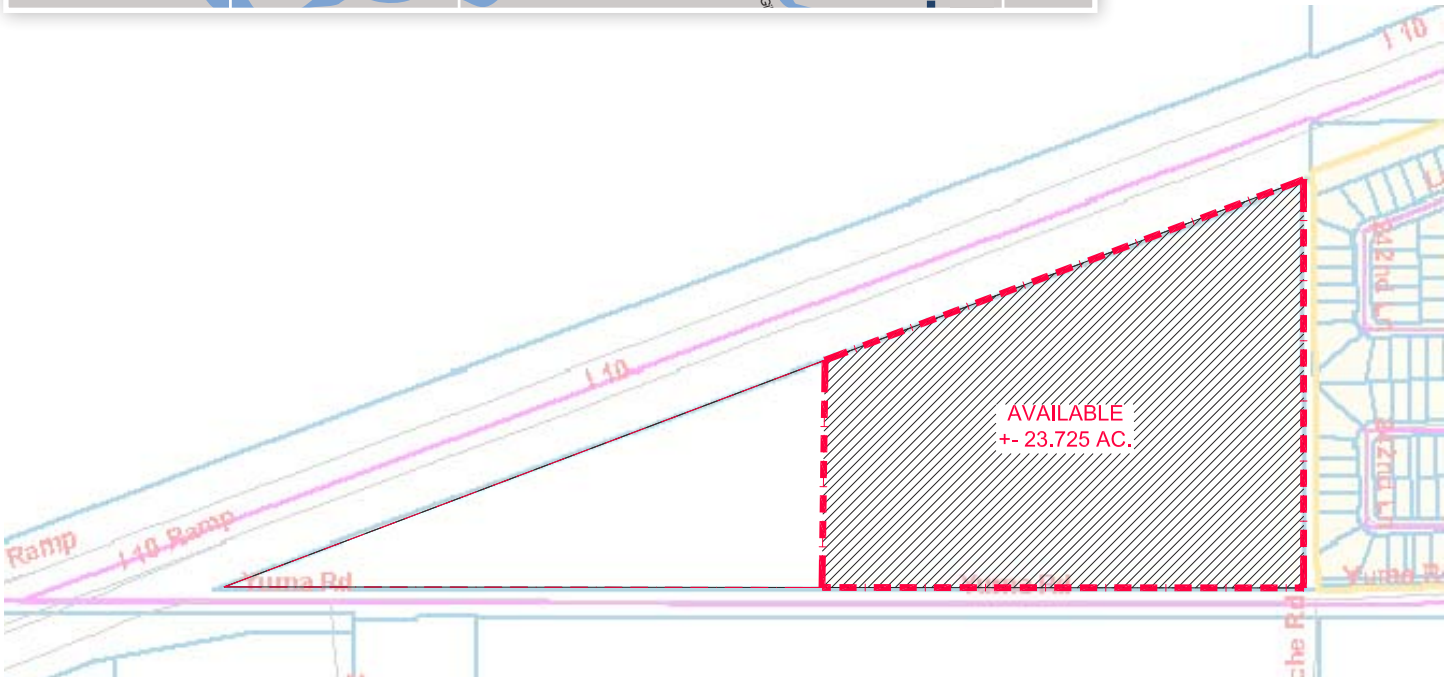
All information furnished regarding property for sale, rental or financing is from sources deemed reliable, but no warranty or representation is made to the accuracy thereof and same is submitted to errors, omissions, change of price, rental or other conditions prior to sale, lease or financing or withdrawal without notice. No liability of any kind is to be imposed on the broker herein.



# NWC of YUMA & Apache Road Buckeye, Arizona

## FOR SALE: 38 ACRES

[www.learizona.com](http://www.learizona.com)



**SITE PLAN**



All information furnished regarding property for sale, rental or financing is from sources deemed reliable, but no warranty or representation is made to the accuracy thereof and same is submitted to errors, omissions, change of price, rental or other conditions prior to sale, lease or financing or withdrawal without notice. No liability of any kind is to be imposed on the broker herein.