

FOR LEASE

CENTRALLY LOCATED OFFICE

3208 & 3210 EAST FORT LOWELL
TUCSON, ARIZONA



TOTAL BUILDING: ±11,593 SF

AVAILABLE SPACE: 3208 E. Ft. Lowell Road
Suite 106 – ±1,400 RSF

3210 E. Ft. Lowell Road
Suite 110 – ±885 RSF

RENTAL RATE: \$15/SF, Modified Gross

ZONING: C-1, City of Tucson

HIGHLIGHTS:

- Convenient central location with easy access to the University of Arizona, Tucson and Medical Center.
- Ample at-door parking.
- Flexible and efficient suite sizes and floor plans.



CONTACT US

DAVID MONTIJO

First Vice President
+1 520 323 5136
david.montijo@cbre.com

JEFF CASPER

Associate
+1 520 323 5181
jeff.casper@cbre.com

www.cbre.us/tucson

CBRE

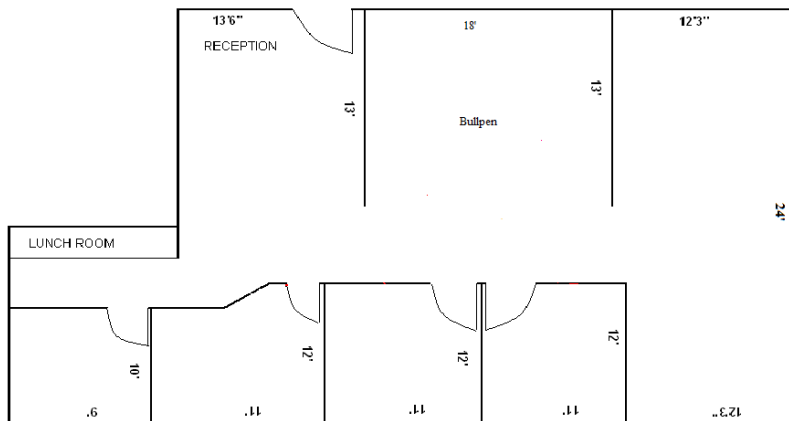
FOR LEASE CENTRALLY LOCATED OFFICE

3208 & 3210
EAST FORT LOWELL



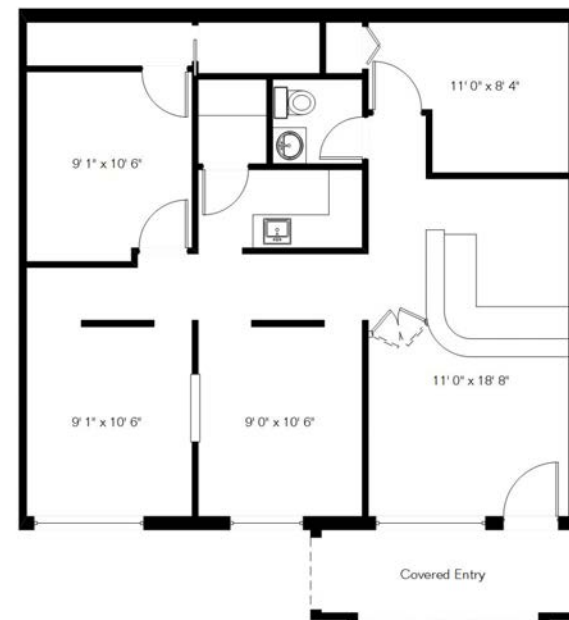
FLOOR PLANS

**3208 E. FT. LOWELL
SUITE 106 - ± 1,400 RSF**



↑ FLOOR PLAN NOT TO SCALE

**3210 E. FT. LOWELL
SUITE 110 - ± 885 RSF**



↙ FLOOR PLAN NOT TO SCALE

© 2017 CBRE, Inc. This information has been obtained from sources believed reliable. We have not verified it and make no guarantee, warranty or representation about it. Any projections, opinions, assumptions or estimates used are for example only and do not represent the current or future performance of the property. You and your advisors should conduct a careful, independent investigation of the property to determine to your satisfaction the suitability of the property for your needs. Photos herein are the property of their respective owners and use of these images without the express written consent of the owner is prohibited. CBRE and the CBRE logo are service marks of CBRE, Inc. and/or its affiliated or related companies in the United States and other countries. All other marks displayed on this document are the property of their respective owners.

www.cbre.us/tucson

CBRE

FOR LEASE
CENTRALLY LOCATED OFFICE

3208 & 3210
EAST FORT LOWELL



PROPERTY PHOTOS



www.cbre.us/tucson

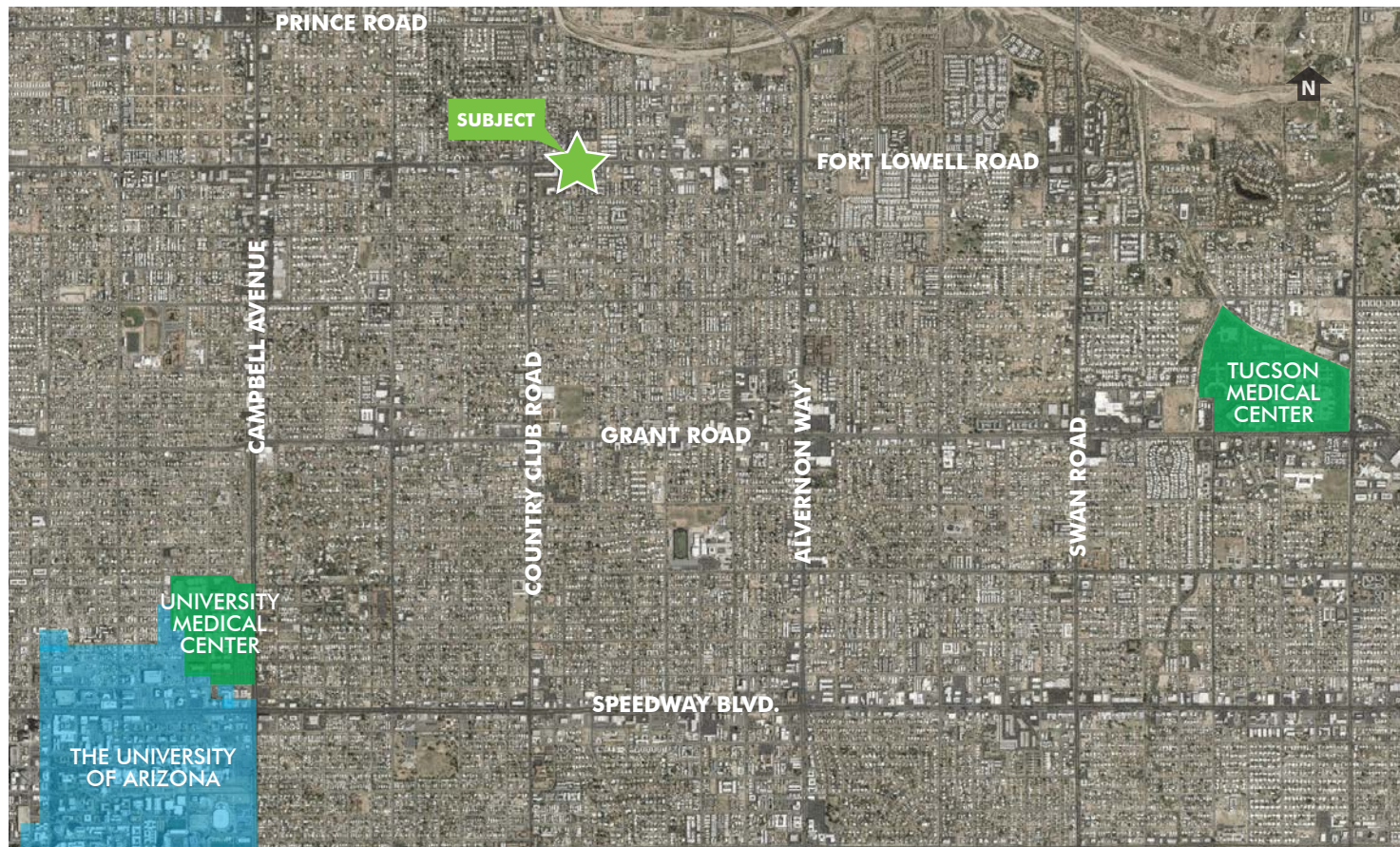
CBRE

FOR LEASE
CENTRALLY LOCATED OFFICE

3208 & 3210
EAST FORT LOWELL



AERIAL MAP



www.cbre.us/tucson

CBRE