

# Century Center Medical/Office Suites



## Second Floor Medical/Office Space Available

19847 Century Boulevard, Germantown, MD 20874

| Floor     | SF       | Asking Rent |
|-----------|----------|-------------|
| Suite 202 | 3,569 SF | \$25.50 FS  |
| Suite 210 | 1,870 SF | \$25.50 FS  |
| Suite 220 | 1,529 SF | \$25.50 FS  |

For leasing information  
please call 301.304.8300

Paul (Rocky) Kern  
pkern@lpc.com  
301.304.8399

Brent Prossner  
bprossner@lpc.com  
301.304.8392

Jennifer Orr  
jorr@lpc.com  
301.304.8393

- **Join fellow medical tenants at Century Center!**
- Prime location for medical tenants, close to Holy Cross Hospital
- Located in the heart of Germantown Town Center
- Numerous nearby restaurants and amenities
- **Free parking, high parking ratio (covered and surface)**



**LINCOLN  
PROPERTY  
COMPANY**

LPCWashingtonDC.com

# RETAIL MAP

19847 Century Boulevard, Germantown, MD 20874



**For leasing information**

Paul (Rocky) Kern  
pkern@lpc.com  
301.304.8399

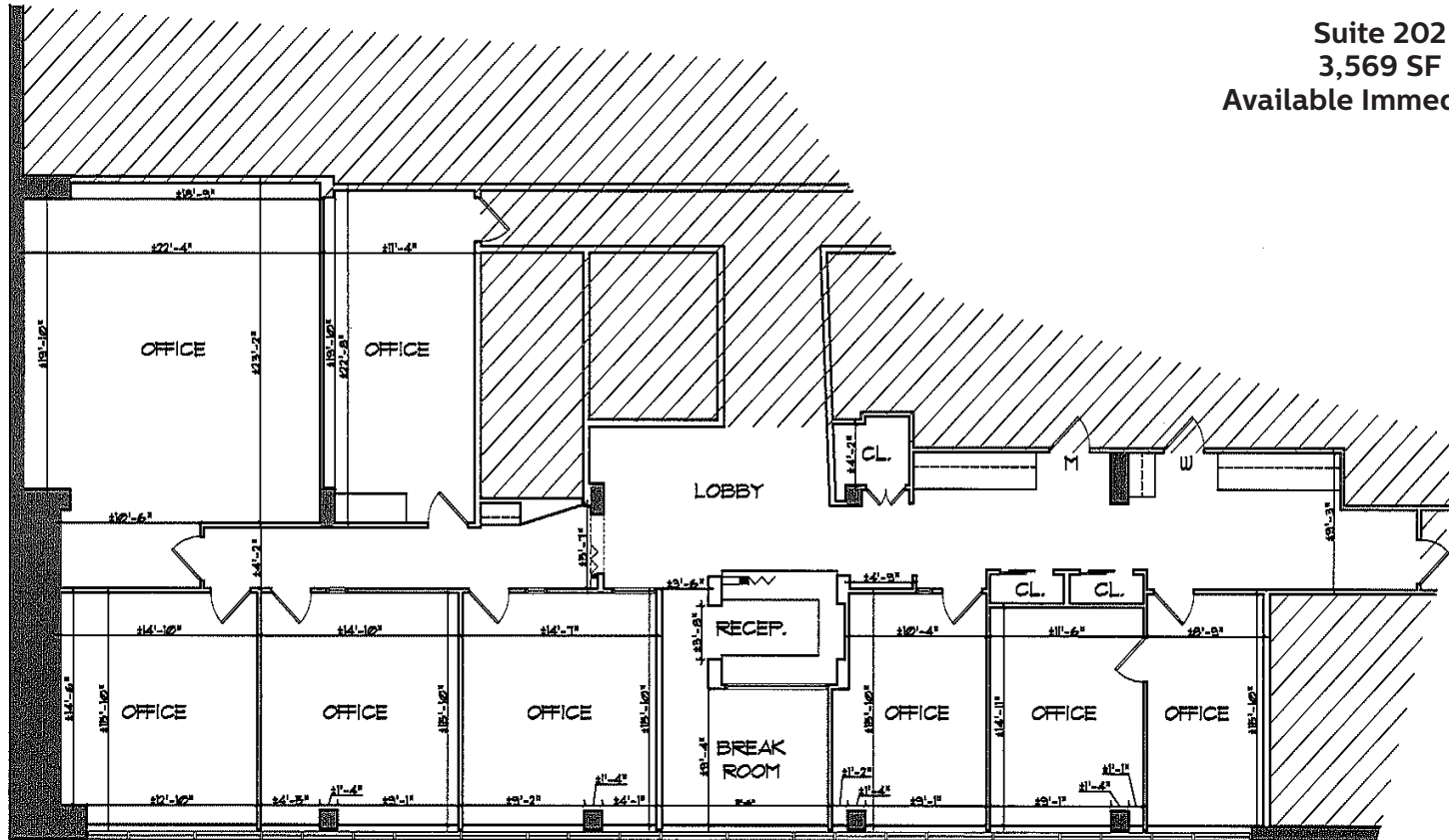
Brent Prossner  
bprossner@lpc.com  
301.304.8392

Jennifer Orr  
jorr@lpc.com  
301.304.8393

# SUITE 202

19847 Century Boulevard, Germantown, MD 20874

Suite 202  
3,569 SF  
Available Immediately



## For leasing information

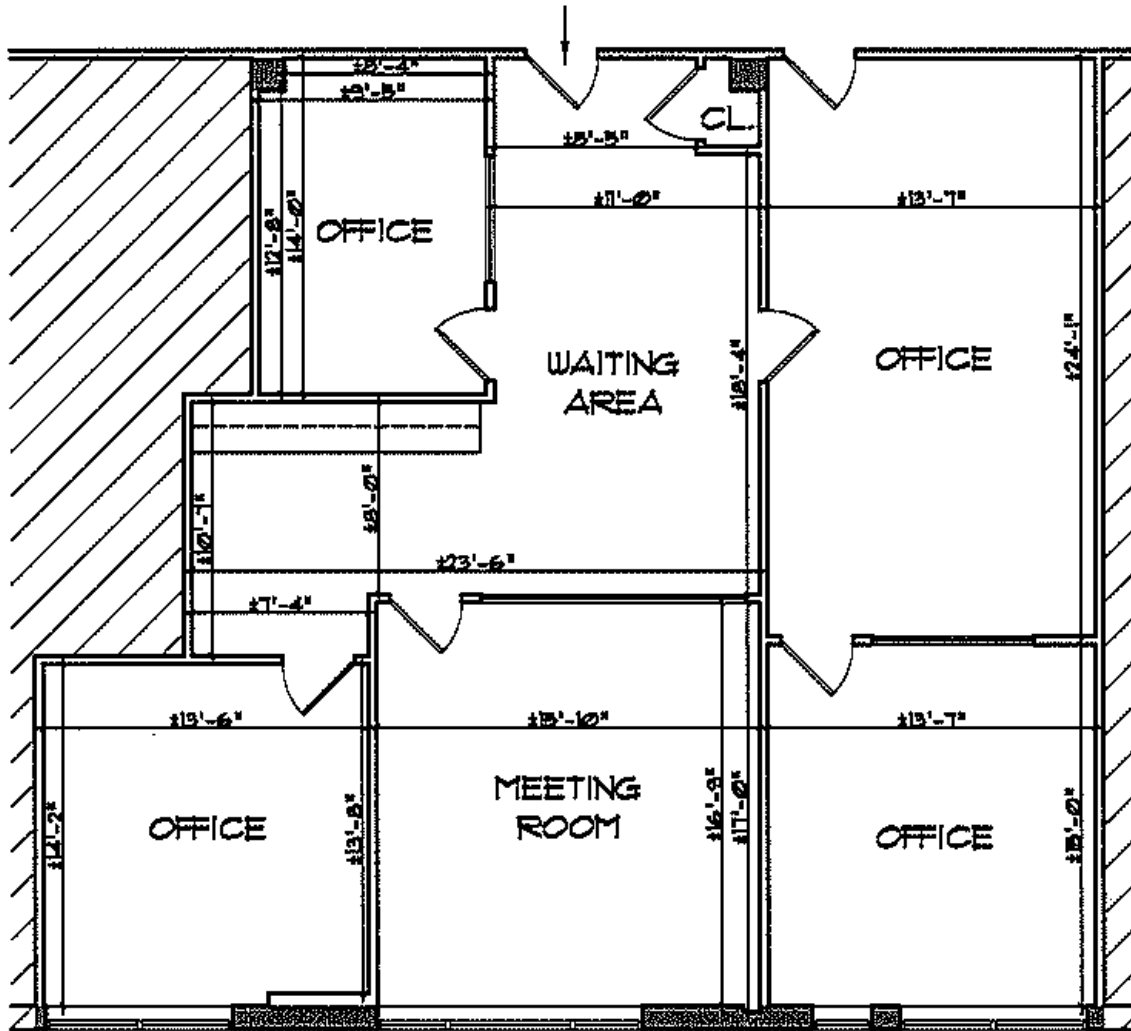
Paul (Rocky) Kern  
pkern@lpc.com  
301.304.8399

Brent Prossner  
bprossner@lpc.com  
301.304.8392

Jennifer Orr  
jorr@lpc.com  
301.304.8393

# SUITE 210

19847 Century Boulevard, Germantown, MD 20874



Suite 210  
1,870 SF  
Available Immediately

## For leasing information

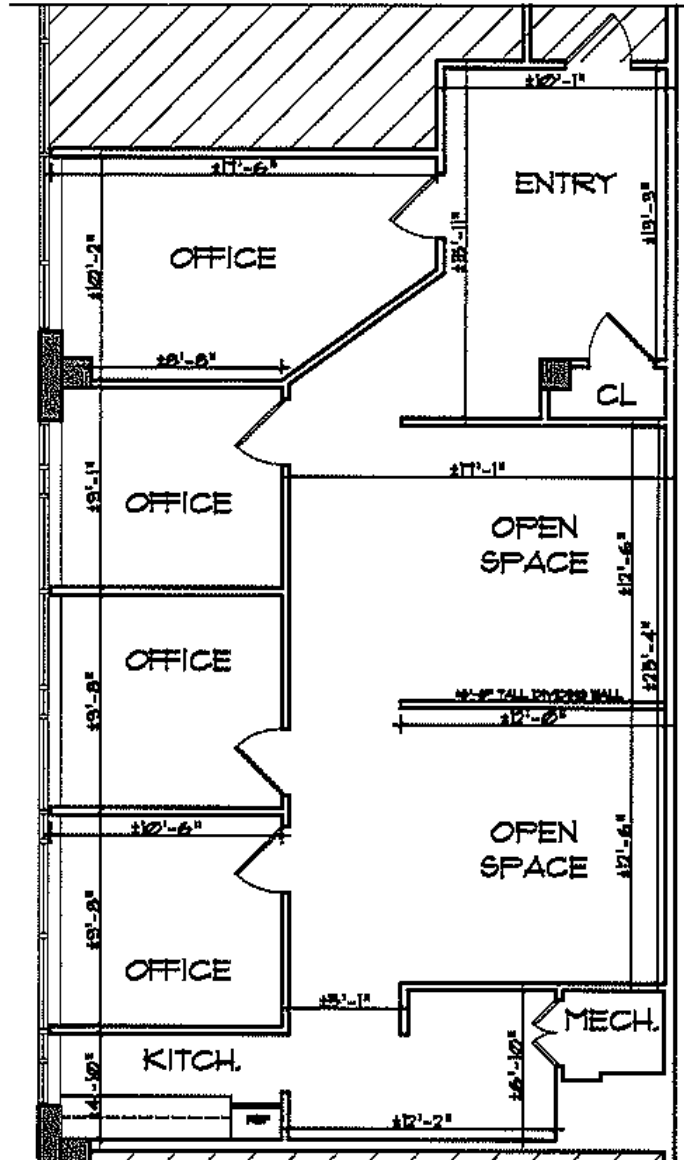
Paul (Rocky) Kern  
pkern@lpc.com  
301.304.8399

Brent Prossner  
bprossner@lpc.com  
301.304.8392

Jennifer Orr  
jorr@lpc.com  
301.304.8393

# SUITE 220

19847 Century Boulevard, Germantown, MD 20874



Suite 220  
1,529 SF  
Available Immediately

## For leasing information

Paul (Rocky) Kern  
pkern@lpc.com  
301.304.8399

Brent Prossner  
bprossner@lpc.com  
301.304.8392

Jennifer Orr  
jorr@lpc.com  
301.304.8393