

# VACANT LAND

Union Lake & Elizabeth Lake Roads, White Lake, MI



## CONTACT

CORBIN YALDOO

T: 248.855.6800

[cyaldo@midamericagrp.com](mailto:cyaldo@midamericagrp.com)



**MID-AMERICA<sup>®</sup>**  
Real Estate-Michigan, Inc.



# VACANT LAND

Union Lake & Elizabeth Lake Roads, White Lake, MI

## ADDRESS



Union Lake Road, South of Elizabeth Lake Road  
White Lake, Michigan

## AVAILABLE LAND

AC

Parcel A: 2.26 Acres  
Parcel B: 0.53 Acres

## TRAFFIC COUNTS (2015)



Union Lake Road:  
7,200 vpd, South of Elizabeth Lake Road

Elizabeth Lake Road:  
5,500 vpd, East of Union Lake Road  
7,100 vpd, West of Union Lake Road

## AREA TENANTS



## TOTAL LAND



2.79 Acres (Divisible)

## FEATURES



- Approximately 2.79 acres of vacant land available for sale along Union Lake Road.
- The property is split into two parcels, which could be divided for smaller users.
- Site offers great visibility and accessibility to Union Lake Road.
- In addition to several schools, it is located within a dense residential community.
- Various national tenants are operating within two miles of the site including: Kroger, JCPenny, and Marshall's.
- Excellent opportunity for a daycare facility, medical office, and/or neighborhood service user.

## TRADE AREA DEMOGRAPHICS

1 Mile	3 Mile	5 Mile
5,444 Est. Population	34,527 Est. Population	94,994 Est. Population
\$000,000 Median HH Income	\$000,000 Median HH Income	\$000,000 Median HH Income
2,169 Est. Households	13,862 Est. Households	37,354 Est. Households
789 Est. Daytime Pop.	7,677 Est. Daytime Pop.	25,626 Est. Daytime Pop.

## CONTACT

CORBIN YALDOO

T: 248.855.6800

cyaldo@midamericagrp.com

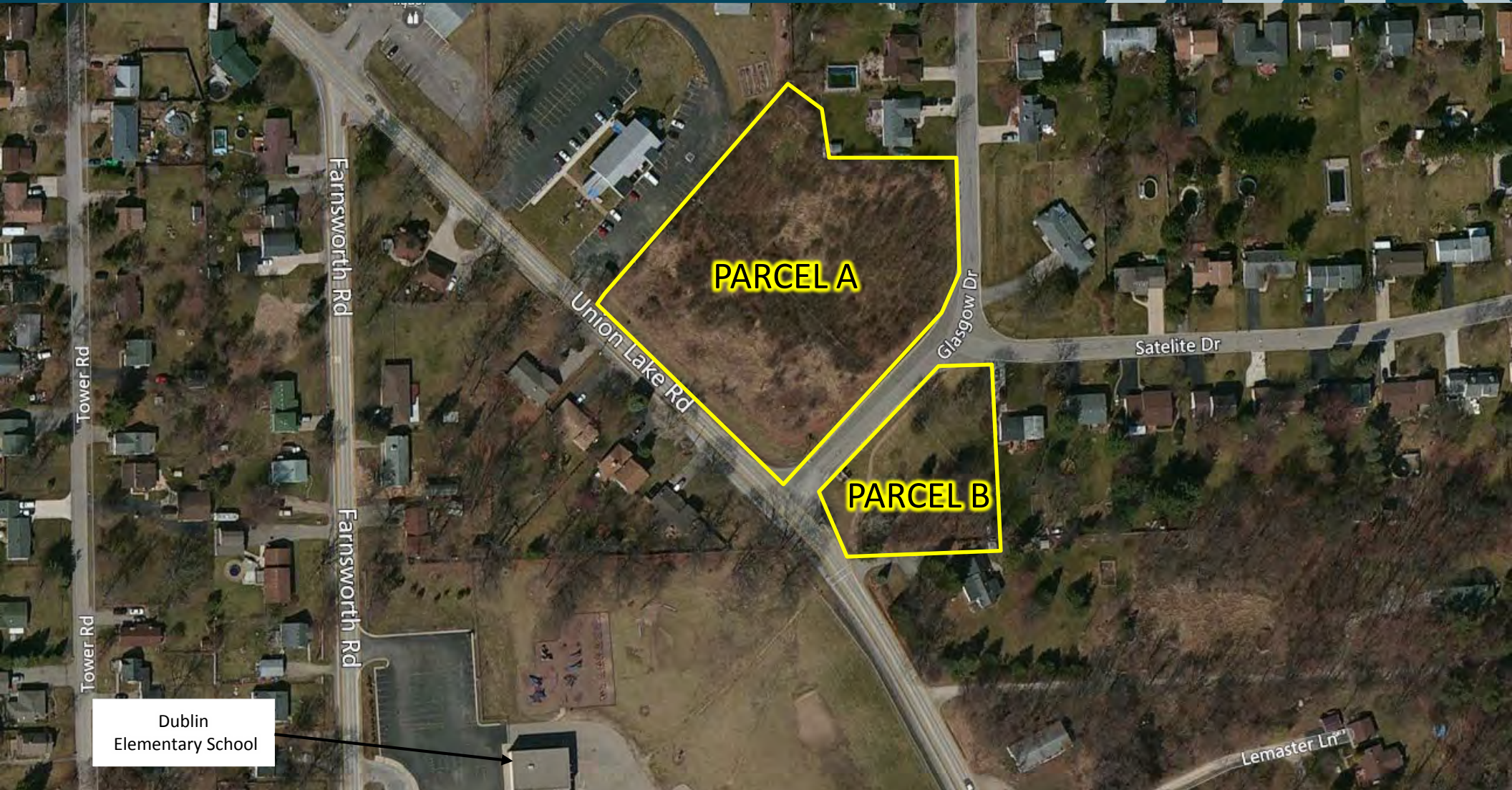


**MID-AMERICA®**  
Real Estate-Michigan, Inc.

38500 Woodward Avenue, Suite 100  
Bloomfield Hills, MI 48304  
www.midamericagrp.com

# VACANT LAND

Union Lake & Elizabeth Lake Roads, White Lake, MI



## CONTACT

**CORBIN YALDOO**

T: 248.855.6800

[cyaldoo@midamericagrp.com](mailto:cyaldoo@midamericagrp.com)



**MID-AMERICA®**  
Real Estate-Michigan, Inc.

38500 Woodward Avenue, Suite 100  
Bloomfield Hills, MI 48304  
[www.midamericagrp.com](http://www.midamericagrp.com)