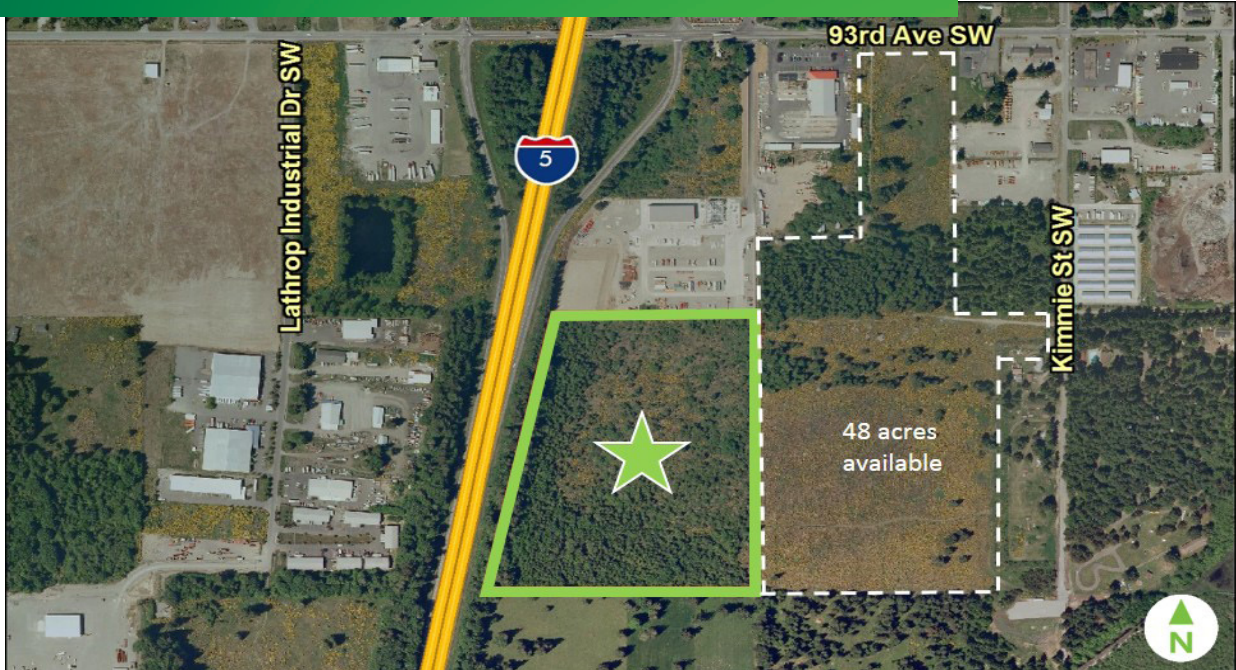


FOR SALE

±31.29 ACRES OF I-5 FRONTAGE

TUMWATER, WASHINGTON



PROPERTY INFORMATION

- + Site Size: ±31.29 acres
- + Parcel #1272 11 30000
- + Zoning: Light Industrial
- + Price: \$4.50 PSF
- + Utilities:
 - Electric: Puget Sound Energy
 - Gas: Puget Sound Energy
 - Water: City of Tumwater
 - Sewer: City of Tumwater
- + I-5 frontage and visibility
- + Adjoining ±48 acres available, call for more information
- + Access to Kimmie Street Southwest
- + Close freeway access
- + Adjoining ±48 acres available with ability to do a 1 million SF building



CONTACT US

DON MOODY

First Vice President
+1 253 596 0045
don.moody@cbre.com

TERESA PATTON

Senior Associate
+1 253 596 0043
teresa.patton@cbre.com

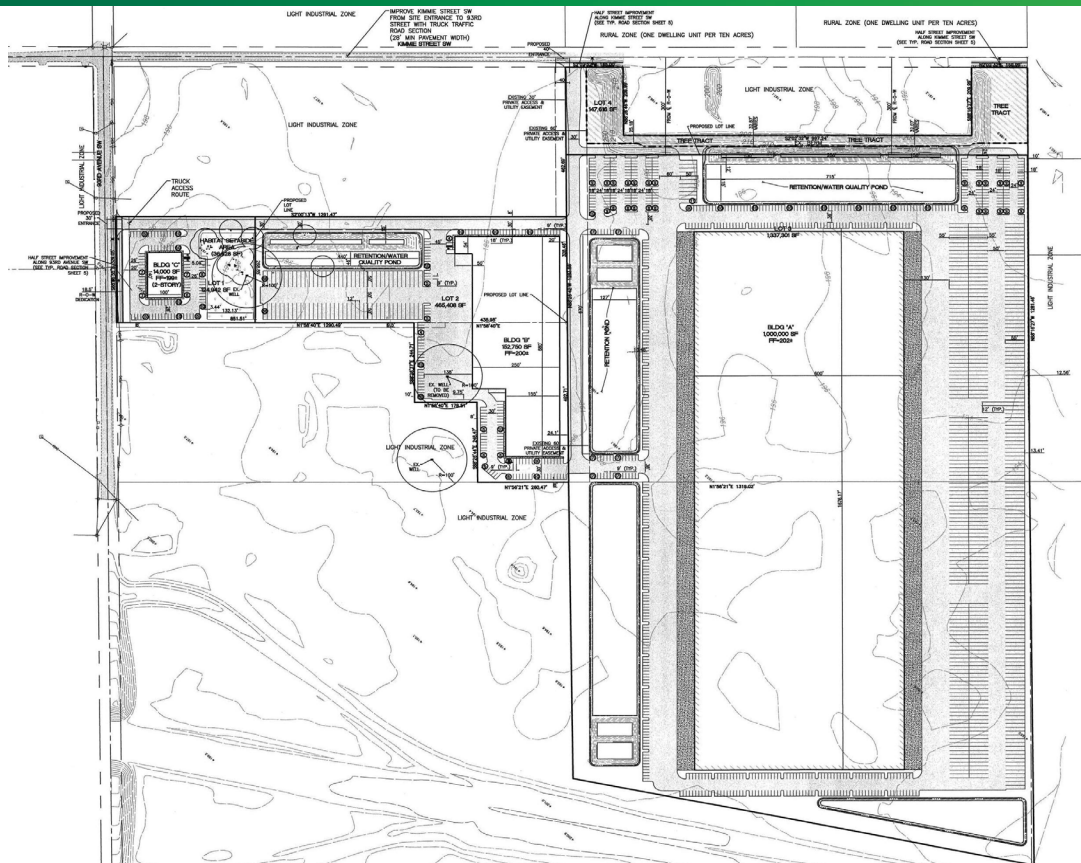
MONTÉ DECKER

First Vice President
+1 253 596 0041
monte.decker@cbre.com

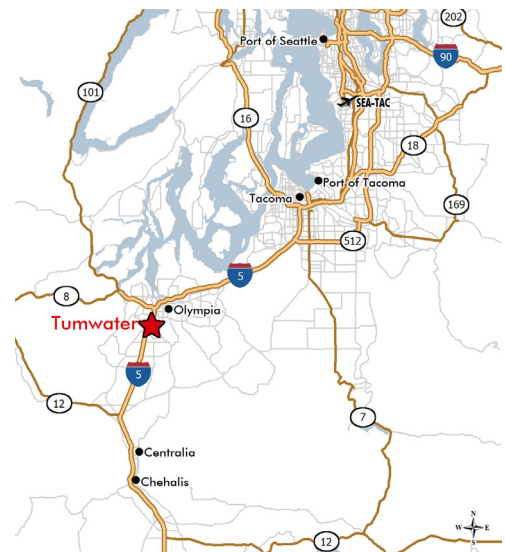
www.cbre.com/lsgseattle

CBRE

FOR SALE ±31.29 ACRES OF I-5 FRONTAGE



Drive Times	Time (Minutes)	Distance (Miles)
I-5	1	.1
Port of Tacoma	39	37
Sea-Tac Airport	58	63
Port of Seattle	76	68
Portland I-84	102	107



© 2016 CBRE, Inc. The information contained in this document has been obtained from sources believed reliable. While CBRE, Inc. does not doubt its accuracy, CBRE, Inc. has not verified it and makes no guarantee, warranty or representation about it. It is your responsibility to independently confirm its accuracy and completeness. Any projections, opinions, assumptions or estimates used are for example only and do not represent the current or future performance of the property. The value of this transaction to you depends on tax and other factors which should be evaluated by your tax, financial and legal advisors. You and your advisors should conduct a careful, independent investigation of the property to determine to your satisfaction the suitability of the property for your needs. Photos herein are the property of their respective owners and use of these images without the express written consent of the owner is prohibited. CBRE and the CBRE logo are service marks of CBRE, Inc. and/or its affiliated or related companies in the United States and other countries. All other marks displayed on this document are the property of their respective owners. mmp 091916