

WESTCHASE PARK

FOR LEASE: 5,450 SF Office | Warehouse Space



OFFICE/WAREHOUSE SPACE > WEST MARKET

PROPERTY FEATURES

- ⌚ Master-planned environment
- ⌚ Conveniently located near Richmond and Beltway 8
- ⌚ Excellent accessibility
- ⌚ Separate parking and loading areas
- ⌚ Two (2) grade level overhead doors
- ⌚ Professionally managed landscaping
- ⌚ Strong institutional owner
- ⌚ Strong corporate identity



3120 Rogerdale Road | Suite 100 | Houston, TX 77042

PROJECT OF



LEASING BY



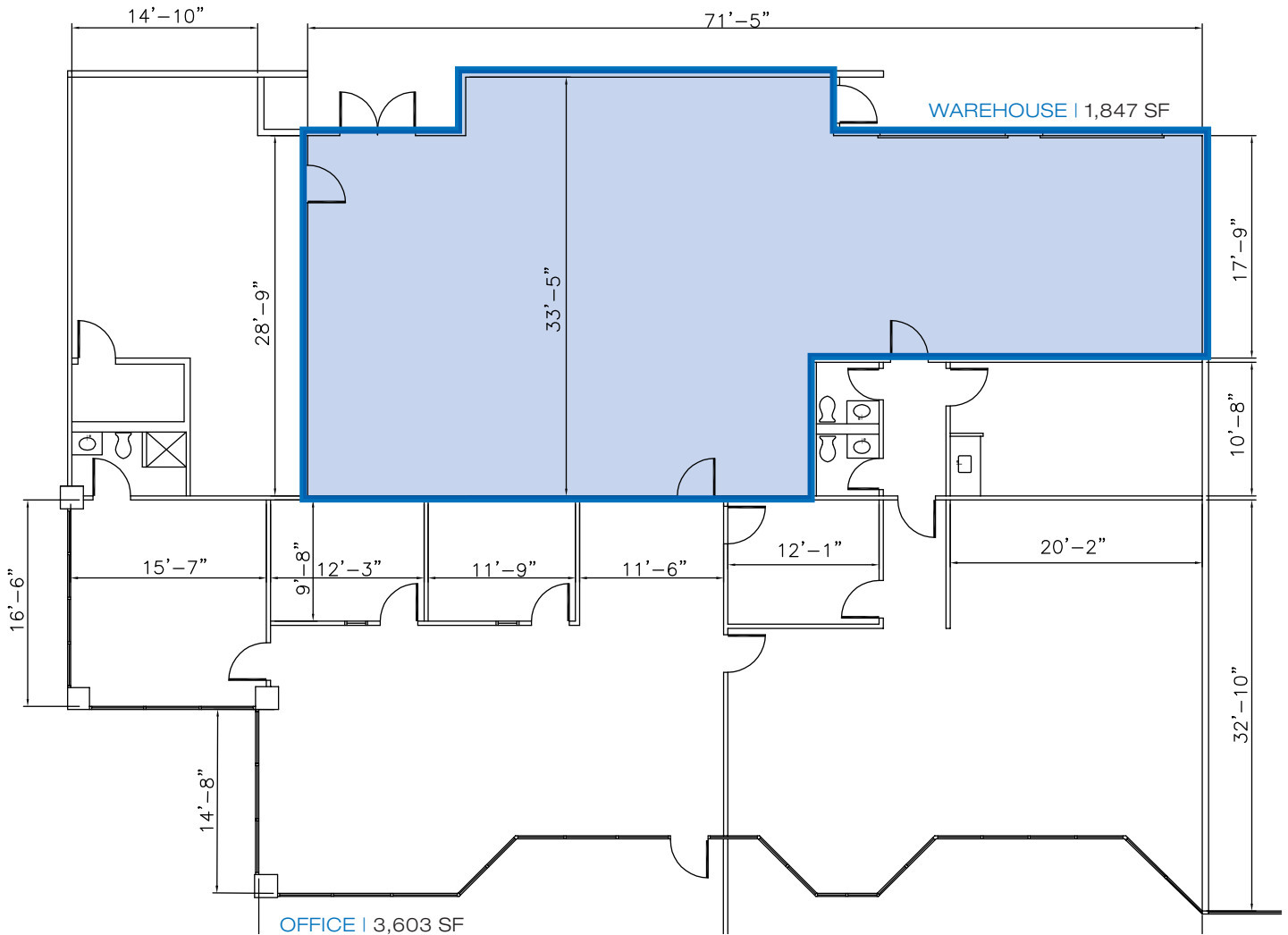
CONTACT US

Carter Thurmond | 713.490.3784 | carter.thurmond@transwestern.com
Jude Filippone | 713.270.3318 | jude.filippone@transwestern.com

WESTCHASE PARK

FOR LEASE: 5,450 SF Office | Warehouse Space

Floor Plan



BUILDING FEATURES

- ④ 14'-0" Average clear height
- ④ Separate parking and loading areas
- ④ Two (2) grade level overhead door

PROJECT OF



LEASING BY



CONTACT US

Carter Thurmond | 713.490.3784 | carter.thurmond@transwestern.com
Jude Filippone | 713.270.3318 | jude.filippone@transwestern.com