

252 Mott Street

Between E Houston and Prince Street | NoLita, NYC

RETAIL FOR LEASE

RETAIL SPACE FOR LEASE

JAMES FAMULARO
646.658.7373
jf@meridiancapital.com

TED LUNDEEN
212.468.5964
tl@meridiancapital.com



MERIDIAN
RETAIL LEASING

252 MOTT STREET

As exclusive agents we are pleased to offer the following retail opportunity for direct lease:

APPROXIMATE SIZE
450 SF

ASKING RENT
\$7,500 Per Month

FRONTAGE
10 feet

TERM
Negotiable

POSSESSION
October 15, 2018

NEIGHBORS
Milk Bar, Juice Press, diptyque, Everlane, Wendy Nichol, Little Cupcake Bakeshop, Prince Street Pizza, Cuyana, Space NK, Café Gitane, Malin+Goetz, Le Labo, Café Habana, Aesop, Unis, Schott, United By Blue, Roots

COMMENTS

- Basement with interior and sidewalk access
- Floor to ceiling glass storefront
- Citi Bike Station on corner

TRANSPORTATION
6 B D F M N Q R

JAMES FAMULARO
President of Retail Leasing
jf@meridiancapital.com
646.658.7373

TED LUNDEEN
Director
tl@meridiancapital.com
212.468.5964

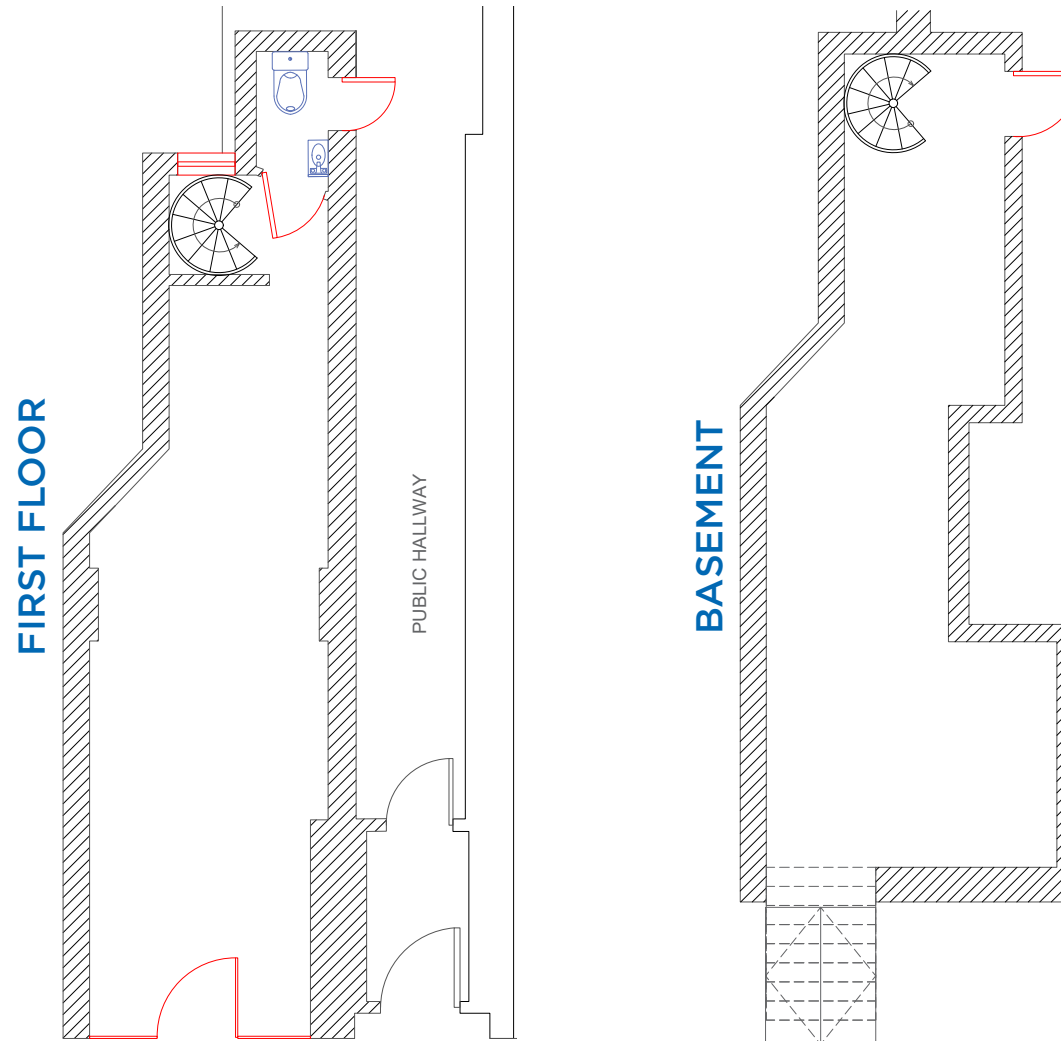


All information supplied is from sources deemed reliable and is furnished subject to errors, omissions, modifications, removal of the listing from sale or lease, and to any listing conditions, including the rates and manner of payment of commissions for particular offerings imposed by Meridian Capital Group. This information may include estimates and projections prepared by Meridian Capital Group with respect to future events, and these future events may or may not actually occur. Such estimates and projections reflect various assumptions concerning anticipated results. While Meridian Capital Group believes these assumptions are reasonable, there can be no assurance that any of these estimates and projections will be correct. Therefore, actual results may vary materially from these estimates and projections. Any square footage dimensions set forth are approximate.

252 Mott Street

Between E Houston and Prince Street | NoLita, NYC

RETAIL FOR LEASE



JAMES FAMULARO

President of Retail Leasing
jf@meridiancapital.com
646.658.7373

TED LUNDEEN

Director
tl@meridiancapital.com
212.468.5964



MERIDIAN
RETAIL LEASING

All information supplied is from sources deemed reliable and is furnished subject to errors, omissions, modifications, removal of the listing from sale or lease, and to any listing conditions, including the rates and manner of payment of commissions for particular offerings imposed by Meridian Capital Group. This information may include estimates and projections prepared by Meridian Capital Group with respect to future events, and these future events may or may not actually occur. Such estimates and projections reflect various assumptions concerning anticipated results. While Meridian Capital Group believes these assumptions are reasonable, there can be no assurance that any of these estimates and projections will be correct. Therefore, actual results may vary materially from these estimates and projections. Any square footage dimensions set forth are approximate.

252 Mott Street

Between E Houston and Prince Street | NoLita, NYC

RETAIL FOR LEASE



JAMES FAMULARO
President of Retail Leasing
jf@meridiancapital.com
646.658.7373

TED LUNDEEN
Director
tl@meridiancapital.com
212.468.5964



All information supplied is from sources deemed reliable and is furnished subject to errors, omissions, modifications, removal of the listing from sale or lease, and to any listing conditions, including the rates and manner of payment of commissions for particular offerings imposed by Meridian Capital Group. This information may include estimates and projections prepared by Meridian Capital Group with respect to future events, and these future events may or may not actually occur. Such estimates and projections reflect various assumptions concerning anticipated results. While Meridian Capital Group believes these assumptions are reasonable, there can be no assurance that any of these estimates and projections will be correct. Therefore, actual results may vary materially from these estimates and projections. Any square footage dimensions set forth are approximate.