

Lease

Exclusive Listing

Office



Property Information

102 Motor Parkway, Hauppauge, NY 11788

Min Available SF: 6,000	Sprinklered: Yes	Premier Hauppauge Location: at the Entrance to the Long Island Expressway (Exit 53), less than 1 mile to Northern State Parkway - One traffic light to Manhattan. Long Island Business News ranked 102 Motor Parkway as one of the top 10 office properties on Long Island. Key Features: On-site property management team * 24 hour access & available storage * Full service café - catering available * Attended lobby/concierge* Full service fitness center, complete with secure locker rooms & showers * Connected concourse between buildings * On-site credit union branch and 24 hour ATM access * Boardroom style conference rooms, training center with modular seating and smaller intimate conference rooms * Wireless Internet access in common areas.
Max Available SF: 14,943	Sewers: Yes	
Gross Building Area: 204,000	Possession: Immediate	
Lease Rate PSF: \$27.50	Lot Size (Acres): 8.9	
Lease Type: + Utilities	Parking: 5 per 1,000	
	Zoning: BUS 3	
	Year Built: 2008	
	Stories: 6	

Suite No.	Min Avail Space	Max Avail Space	Rent PSF	Electric PSF	Availability	Description
P 3rd Fl	6,000	14,943	\$27.50		Immediate	2nd Gen Space

For Information please contact Lee Rosner, CCIM SIOR (631) 761-6886 Direct Dial Email lrosner@cbcli.com
 Leo Farrell (631) 761-9401 Direct Dial Email lfarrell@cbcli.com

CBCLI.COM

This statement with the information it contains is given with the understanding that negotiations relating to the purchase, renting or leasing of this property shall be conducted through this office. The information while not guaranteed has been secured from sources we believe to be reliable however, it is up to the buyer or tenant to verify the information and conduct appropriate due diligence. Coldwell Banker Commercial and its Logo are registered service marks owned by Coldwell Banker Real Estate, LLC. Each Office is Independently Owned and Operated. All Rights Reserved. © 2017-18

Coldwell Banker Commercial Island Corporate Services
 1601 Veterans Memorial Highway, Suite 420
 Islandia, NY 11749

Lease

Exclusive Listing

Office



Alternate Photo



Alternate Photo

For Information please contact

Lee Rosner, CCIM SIOR
Leo Farrell

(631) 761-6886 Direct Dial
(631) 761-9401 Direct Dial

Email lorosner@cbcli.com
Email lfarrell@cbcli.com

CBCLI.COM

This statement with the information it contains is given with the understanding that negotiations relating to the purchase, renting or leasing of this property shall be conducted through this office. The information while not guaranteed has been secured from sources we believe to be reliable however, it is up to the buyer or tenant to verify the information and conduct appropriate due diligence. Coldwell Banker Commercial and its Logo are registered service marks owned by Coldwell Banker Real Estate, LLC. Each Office is Independently Owned and Operated. All Rights Reserved. © 2017-18

Coldwell Banker Commercial Island Corporate Services
1601 Veterans Memorial Highway, Suite 420
Islandia, NY 11749

Lease

Exclusive Listing

Office



For Information please contact

Lee Rosner, CCIM SIOR
Leo Farrell

(631) 761-6886 Direct Dial
(631) 761-9401 Direct Dial

Email lorosner@cbcli.com
Email lfarrell@cbcli.com

CBCLI.COM

This statement with the information it contains is given with the understanding that negotiations relating to the purchase, renting or leasing of this property shall be conducted through this office. The information while not guaranteed has been secured from sources we believe to be reliable however, it is up to the buyer or tenant to verify the information and conduct appropriate due diligence. Coldwell Banker Commercial and its Logo are registered service marks owned by Coldwell Banker Real Estate, LLC. Each Office is Independently Owned and Operated. All Rights Reserved. © 2017-18

Coldwell Banker Commercial Island Corporate Services
1601 Veterans Memorial Highway, Suite 420
Islandia, NY 11749

Lease

Exclusive Listing

Office



For Information please contact

Lee Rosner, CCIM SIOR
Leo Farrell

(631) 761-6886 Direct Dial
(631) 761-9401 Direct Dial

Email lorosner@cbcli.com
Email lfarell@cbcli.com

CBCLI.COM

This statement with the information it contains is given with the understanding that negotiations relating to the purchase, renting or leasing of this property shall be conducted through this office. The information while not guaranteed has been secured from sources we believe to be reliable however, it is up to the buyer or tenant to verify the information and conduct appropriate due diligence. Coldwell Banker Commercial and its Logo are registered service marks owned by Coldwell Banker Real Estate, LLC. Each Office is Independently Owned and Operated. All Rights Reserved. © 2017-18

Coldwell Banker Commercial Island Corporate Services
1601 Veterans Memorial Highway, Suite 420
Islandia, NY 11749



Alternate Photo



Alternate Photo

For Information please contact

Lee Rosner, CCIM SIOR
Leo Farrell

(631) 761-6886 Direct Dial
(631) 761-9401 Direct Dial

Email lrosner@cbcli.com
Email lfarrell@cbcli.com

CBCLI.COM

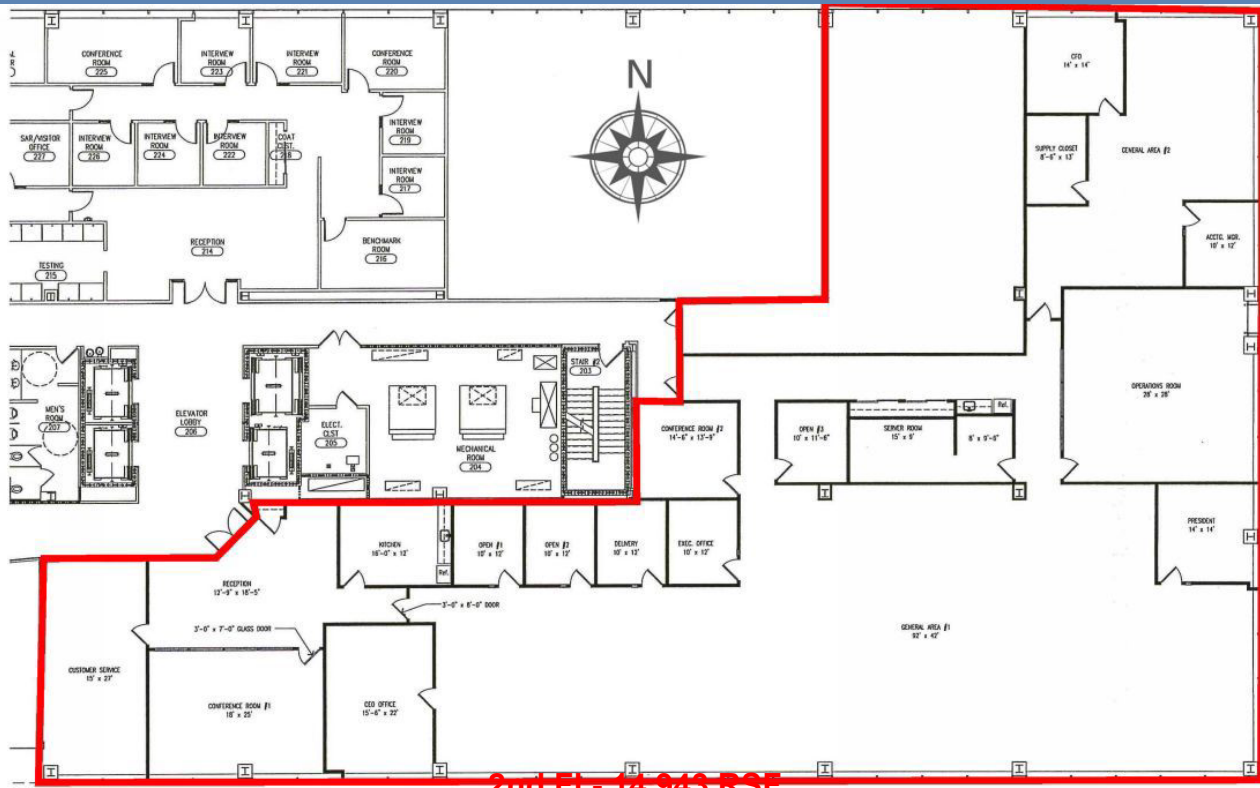
This statement with the information it contains is given with the understanding that negotiations relating to the purchase, renting or leasing of this property shall be conducted through this office. The information while not guaranteed has been secured from sources we believe to be reliable however, it is up to the buyer or tenant to verify the information and conduct appropriate due diligence. Coldwell Banker Commercial and its Logo are registered service marks owned by Coldwell Banker Real Estate, LLC. Each Office is Independently Owned and Operated. All Rights Reserved. © 2017-18

Coldwell Banker Commercial Island Corporate Services
1601 Veterans Memorial Highway, Suite 420
Islandia, NY 11749

Lease

Exclusive Listing

Office



2nd Fl - 14,943 RSF

For Information please contact

Lee Rosner, CCIM SIOR
Leo Farrell

(631) 761-6886 Direct Dial
(631) 761-9401 Direct Dial

Email lrosner@cbcli.com
Email lfarell@cbcli.com

CBCLI.COM

This statement with the information it contains is given with the understanding that negotiations relating to the purchase, renting or leasing of this property shall be conducted through this office. The information while not guaranteed has been secured from sources we believe to be reliable however, it is up to the buyer or tenant to verify the information and conduct appropriate due diligence. Coldwell Banker Commercial and its Logo are registered service marks owned by Coldwell Banker Real Estate, LLC. Each Office is Independently Owned and Operated. All Rights Reserved. © 2017-18

Coldwell Banker Commercial Island Corporate Services
1601 Veterans Memorial Highway, Suite 420
Islandia, NY 11749