

**BRENTWOOD PLACE SHOPPING CENTER**

**11701 Wilshire Boulevard**  
**Los Angeles, CA 90025**



**RESTAURANT/RETAIL**  
**FOR LEASE**



**ARTHUR PETER**  
**310.395.2663 X101**  
**ARTHUR@PARCOMMERCIAL.COM**  
**LIC# 010686613**

**RAFAEL PADILLA**  
**310.395.2663 X102**  
**RAFAEL@PARCOMMERCIAL.COM**  
**LIC# 00960188**

**GREG ECKHARDT**  
**310.395.2663 x103**  
**GECKO@PARCOMMERCIAL.COM**  
**Lic# 01255469**

## PROPERTY CHARACTERISTICS



- PROMINENT SIGNALIZED BRENTWOOD CORNER
- NEARLY 2 MILLION SQUARE FEET OF OFFICE SPACE NEARBY
- EXCELLENT DEMOGRAPHICS IN HIGH INCOME AREA WITH TRAFFIC COUNTS IN EXCESS OF 75,000 VEHICLES PER DAY
- VALET PARKING AVAILABLE FOR CUSTOMERS
- LOCATED ON VERY BUSY SIGNALIZED CORNER OF BARRINGTON AND WILSHIRE BOULEVARD

## 11701 WILSHIRE BOULEVARD

### Suites 7, 11, 14B-1 & 15B Los Angeles, CA 90025

**SUITE 7:** Approximately 1,312 square feet

**RATE:** \$3.50 per square foot per month + NNN

**SUITE 11:** Approximately 5,070 square feet

**RATE:** \$3.50 per square foot per month + NNN

**SUITE 14b-1:** Approximately 1,050 square feet

**RATE:** \$2.50 per square foot per month + NNN

*Currently built out as a hair salon*

**SUITE 15b:** Approximately 3,636 square feet

**RATE:** \$2.50 per square foot per month + NNN

**NNN:** Estimated to be \$1.25 per square foot per month

**TERM:** 3 - 10 years

**PARKING:** Abundant surface and subterranean spaces available

**AVAILABLE:** Immediately



**ARTHUR PETER**  
310.395.2663 X101  
ARTHUR@PARCOMMERCIAL.COM  
LIC# 010686613

**RAFAEL PADILLA**  
310.395.2663 X102  
RAFAEL@PARCOMMERCIAL.COM  
LIC# 00960188

**GREG ECKHARDT**  
310.395.2663 x103  
GECKO@PARCOMMERCIAL.COM  
Lic# 01255469



## SUITE 11 PROPERTY PHOTOS



**ARTHUR PETER**  
**310.395.2663 X101**  
**ARTHUR@PARCOMMERCIAL.COM**  
**LIC# 010686613**

**RAFAEL PADILLA**  
**310.395.2663 X102**  
**RAFAEL@PARCOMMERCIAL.COM**  
**LIC# 00960188**

**GREG ECKHARDT**  
**310.395.2663 x103**  
**GECKO@PARCOMMERCIAL.COM**  
**Lic# 01255469**

## SUITE 11 PROPERTY PHOTOS



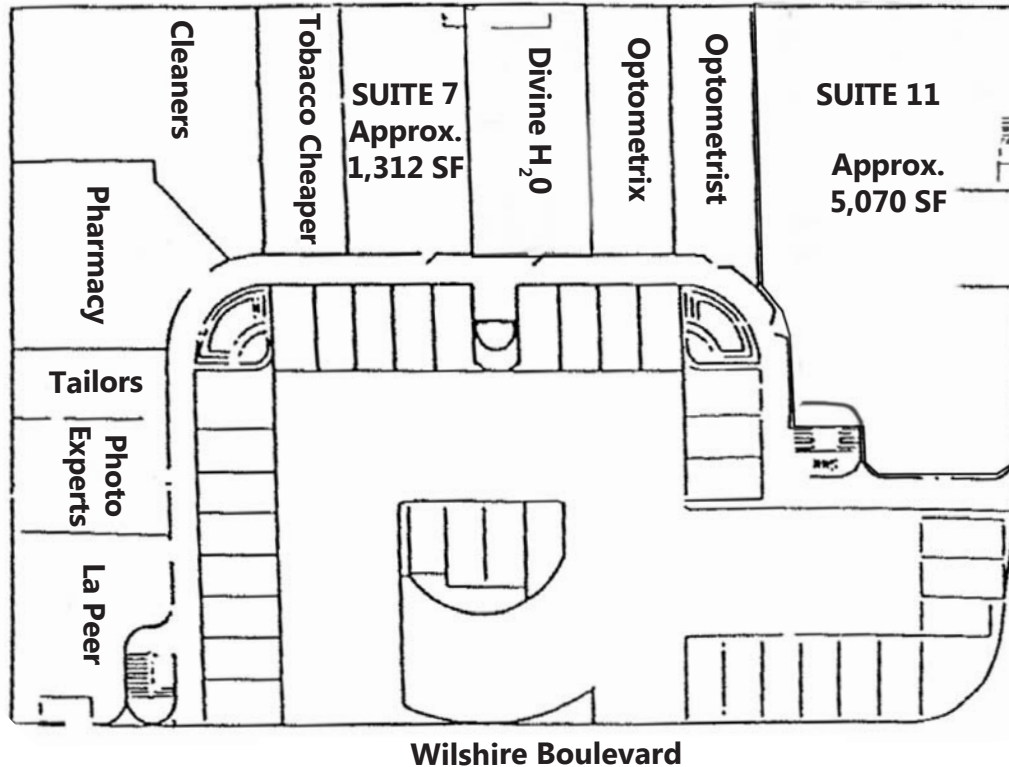
**ARTHUR PETER**  
**310.395.2663 X101**  
**ARTHUR@PARCOMMERCIAL.COM**  
**LIC# 010686613**

**RAFAEL PADILLA**  
**310.395.2663 X102**  
**RAFAEL@PARCOMMERCIAL.COM**  
**LIC# 00960188**

**GREG ECKHARDT**  
**310.395.2663 x103**  
**GECKO@PARCOMMERCIAL.COM**  
**Lic# 01255469**



## 1<sup>st</sup> FLOOR



**ARTHUR PETER**  
310.395.2663 X101  
ARTHUR@PARCOMMERCIAL.COM  
LIC# 010686613

**RAFAEL PADILLA**  
310.395.2663 X102  
RAFAEL@PARCOMMERCIAL.COM  
LIC# 00960188

**GREG ECKHARDT**  
310.395.2663 x103  
GECKO@PARCOMMERCIAL.COM  
Lic# 01255469

## SUITE 15B PROPERTY PHOTOS

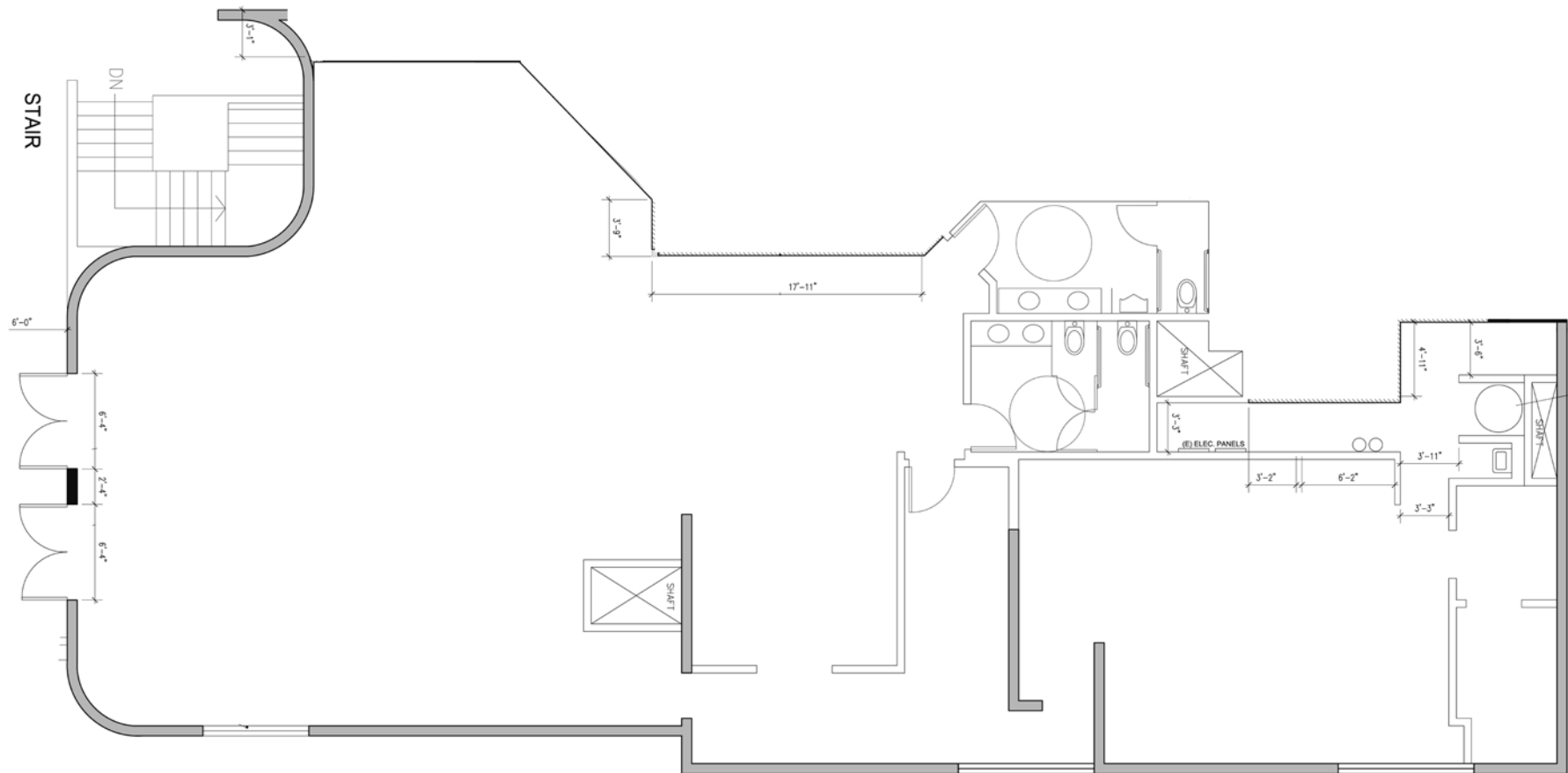


**ARTHUR PETER**  
310.395.2663 X101  
ARTHUR@PARCOMMERCIAL.COM  
LIC# 010686613

**RAFAEL PADILLA**  
310.395.2663 X102  
RAFAEL@PARCOMMERCIAL.COM  
LIC# 00960188

**GREG ECKHARDT**  
310.395.2663 x103  
GECKO@PARCOMMERCIAL.COM  
Lic# 01255469

# SUITE 15B FLOOR PLAN



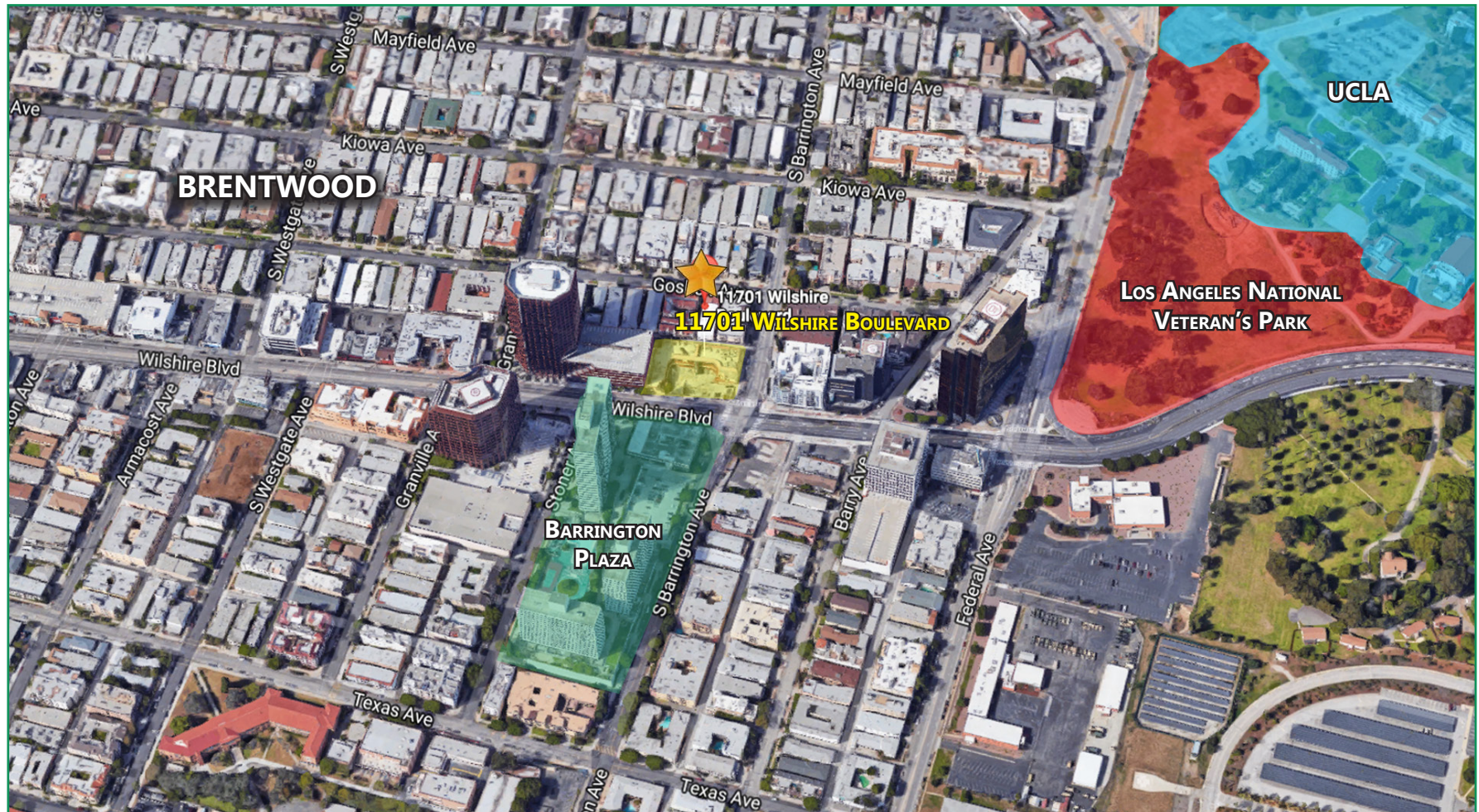
**ARTHUR PETER**  
**310.395.2663 X101**  
**ARTHUR@PARCOMMERCIAL.COM**  
**LIC# 010686613**

**RAFAEL PADILLA**  
**310.395.2663 X102**  
**RAFAEL@PARCOMMERCIAL.COM**  
**LIC# 00960188**

**GREG ECKHARDT**  
**310.395.2663 x103**  
**GECKO@PARCOMMERCIAL.COM**  
**Lic# 01255469**



# 11701 WILSHIRE BOULEVARD AERIAL MAP



**NEIGHBORS INCLUDE ROSS DRESS FOR LESS, CVS PHARMACY, RALPH'S FRESH FARE MARKET, THE WILSHIRE LANDMARK (APPROXIMATELY 750,000 SQUARE FEET OF CLASS A OFFICE SPACE), AND MANY OTHER ESTABLISHED RETAILERS AND RESTAURANTS.**



**ARTHUR PETER**  
310.395.2663 X101  
ARTHUR@PARCOMMERCIAL.COM  
LIC# 010686613

**RAFAEL PADILLA**  
310.395.2663 X102  
RAFAEL@PARCOMMERCIAL.COM  
LIC# 00960188

**GREG ECKHARDT**  
310.395.2663 x103  
GECKO@PARCOMMERCIAL.COM  
Lic# 01255469