

# AVAILABLE FOR LEASE

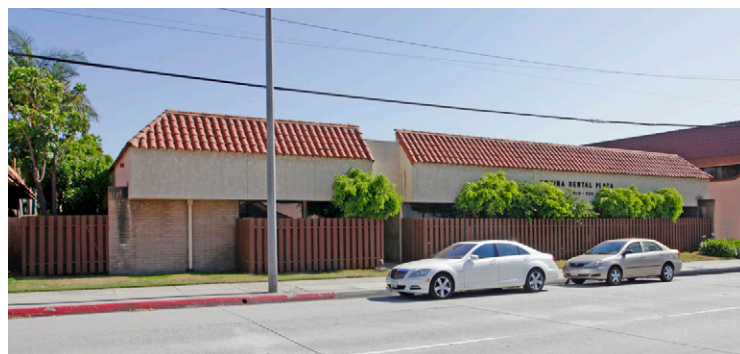
510-520 W. Badillo Street \ Covina CA 91722



## HIGHLIGHTS

- COVINA DENTAL PLAZA
- Medical / Dental Space Available
- Divisible to  $\pm 900$  SF
- Great Access to Citrus Valley Health Partners Hospital
- Dental Space with 5 Operation Areas
- Very Functional Floor Plan
- Move-In Ready!
- Close Proximity to 10 Freeway

SUITE	SQUARE FEET
512	920
518	1,180



## LEE & ASSOCIATES - PASADENA

155 N. Lake Ave. Suite 430  
Pasadena CA 91101  
626.535.9888 \ **main**  
626.410.6705 \ **fax**  
[www.lee-associates.com](http://www.lee-associates.com)  
Corporate ID #02059558

## CHRIS JOHNSON

Senior Vice President • LICENSE ID #01934154

**626.240.2786**

[chris.johnson@lee-associates.com](mailto:chris.johnson@lee-associates.com)

A Member of



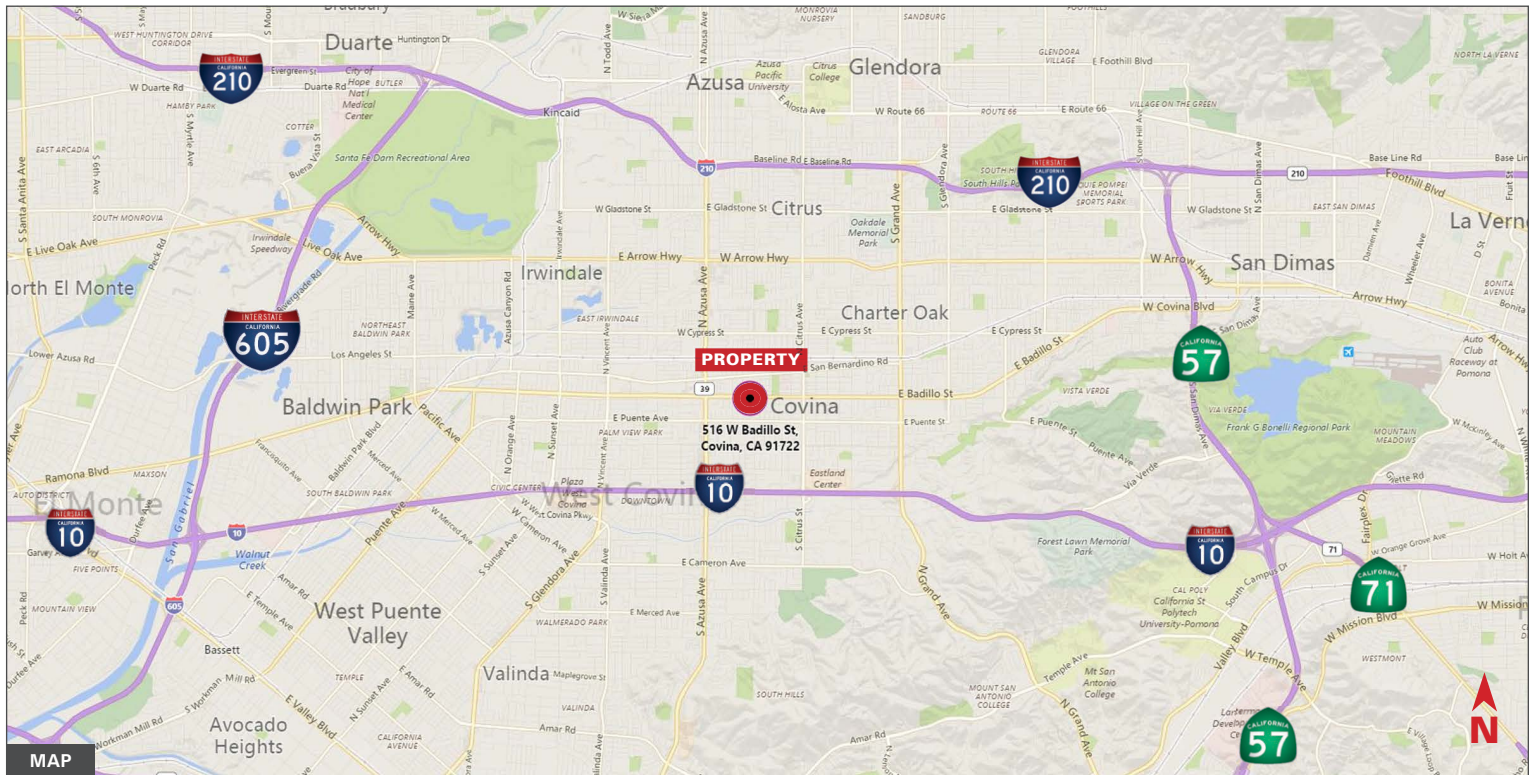
**LEE &  
ASSOCIATES**

COMMERCIAL REAL ESTATE SERVICES  
**PASADENA**



# AVAILABLE FOR LEASE

510-520 W. Badillo Street \ Covina CA 91722



## LEE & ASSOCIATES - PASADENA

155 N. Lake Ave. Suite 430  
Pasadena CA 91101  
626.535.9888 \ main  
626.410.6705 \ fax  
www.lee-associates.com  
Corporate ID #02059558

## CHRIS JOHNSON

Senior Vice President • LICENSE ID #01934154

626.240.2786

chris.johnson@lee-associates.com

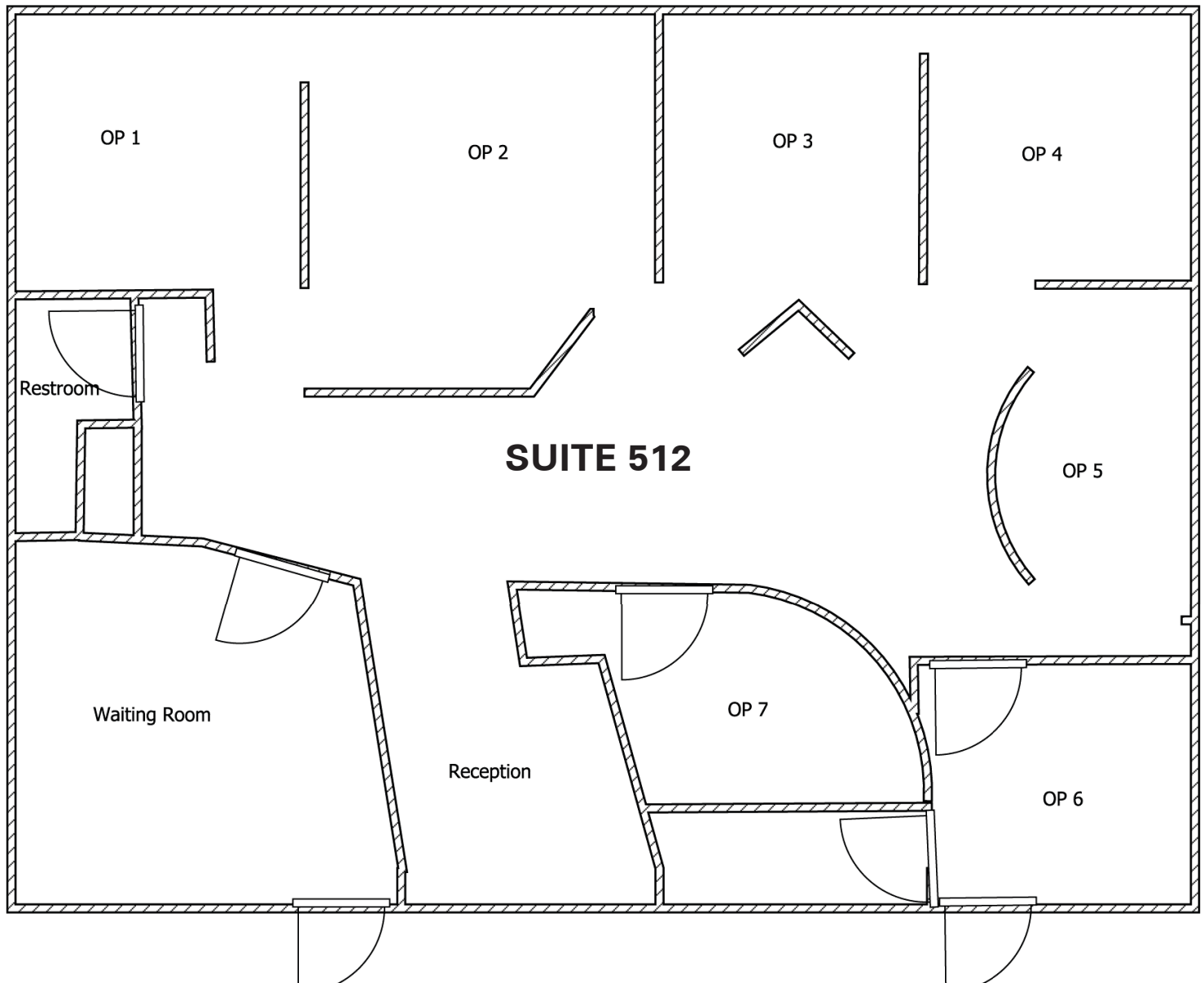
A Member of

**LEE & ASSOCIATES**  
COMMERCIAL REAL ESTATE SERVICES  
**PASADENA**



# AVAILABLE FOR LEASE

510-520 W. Badillo Street \ Covina CA 91722



## LEE & ASSOCIATES - PASADENA

155 N. Lake Ave. Suite 430  
Pasadena CA 91101  
626.535.9888 \ **main**  
626.410.6705 \ **fax**  
[www.lee-associates.com](http://www.lee-associates.com)  
Corporate ID #02059558

## CHRIS JOHNSON

Senior Vice President • LICENSE ID #01934154

**626.240.2786**

[chris.johnson@lee-associates.com](mailto:chris.johnson@lee-associates.com)

A Member of



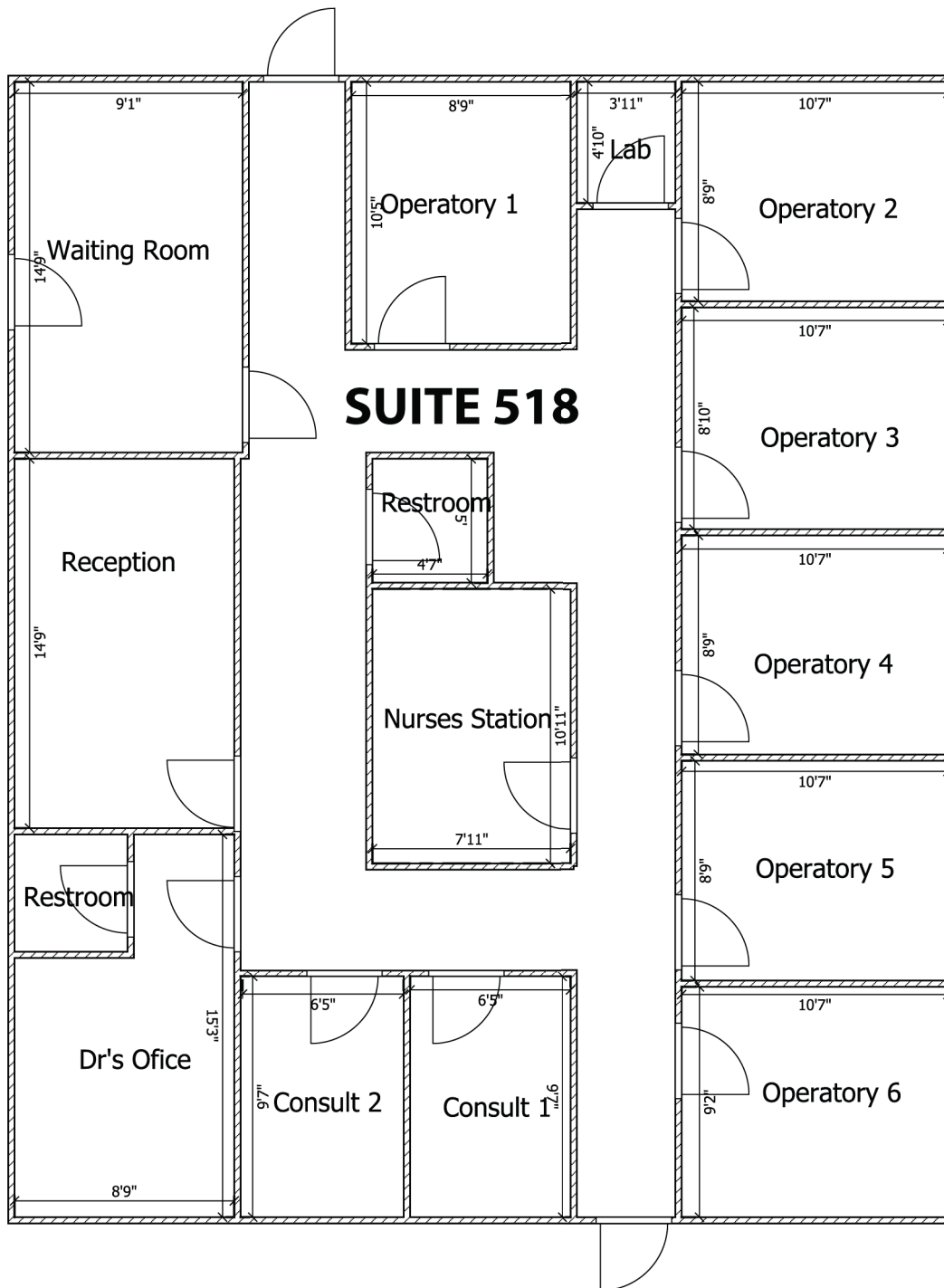
**LEE &  
ASSOCIATES**

COMMERCIAL REAL ESTATE SERVICES  
**PASADENA**



# AVAILABLE FOR LEASE

510-520 W. Badillo Street \ Covina CA 91722



## LEE & ASSOCIATES - PASADENA

155 N. Lake Ave. Suite 430

Pasadena CA 91101

626.535.9888 \ main

626.410.6705 \ fax

[www.lee-associates.com](http://www.lee-associates.com)

Corporate ID #02059558

## CHRIS JOHNSON

Senior Vice President • LICENSE ID #01934154

**626.240.2786**

[chris.johnson@lee-associates.com](mailto:chris.johnson@lee-associates.com)

A Member of



**LEE &  
ASSOCIATES**

COMMERCIAL REAL ESTATE SERVICES  
**PASADENA**