

## 215 W SUPERIOR Chicago, Illinois

The impressive 7-story, 35,000 sf, brick building at 215 W Superior Street, Chicago, offers an incredible opportunity for tenants looking to rent office space in the vibrant River North neighborhood.

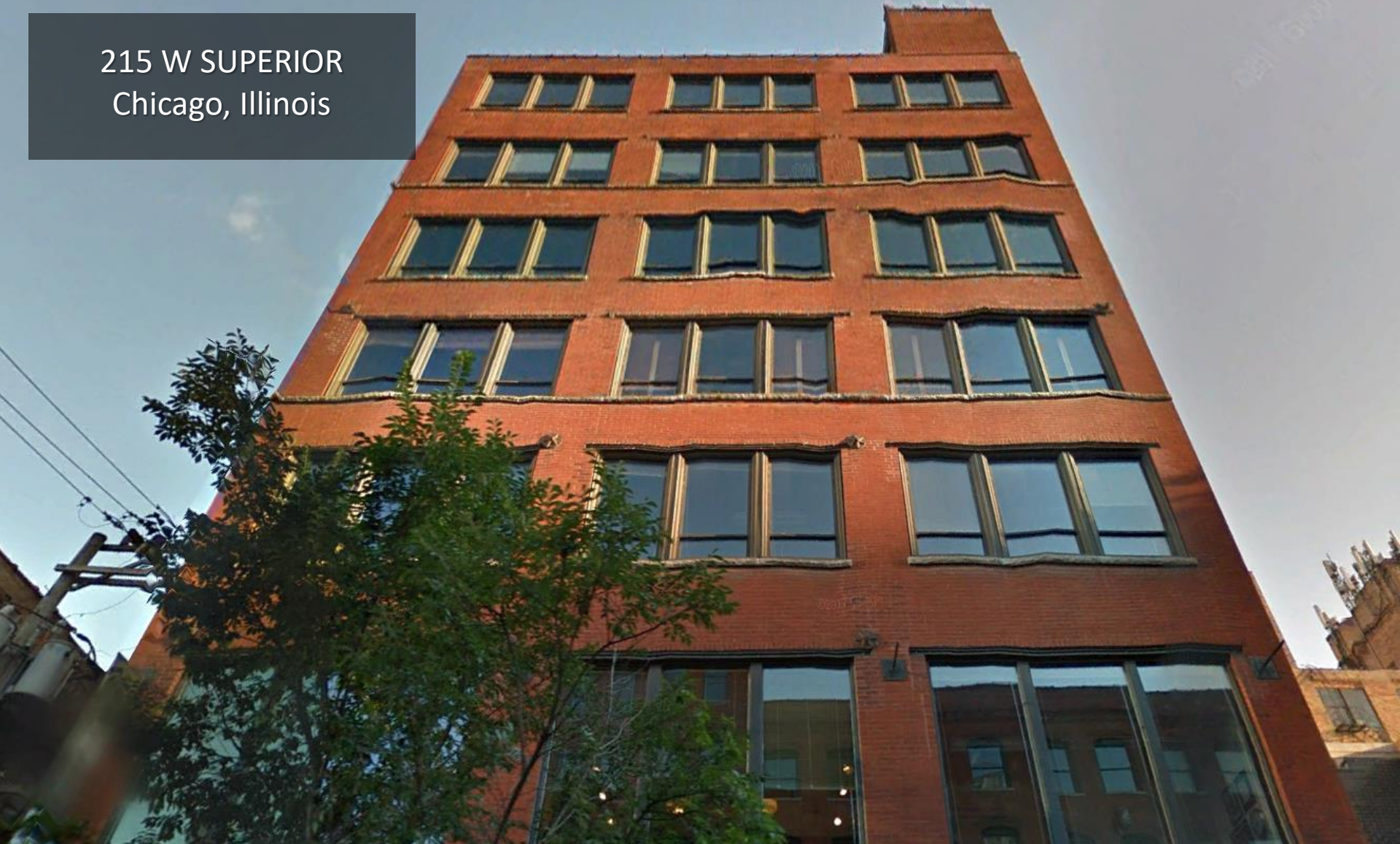
Inside, tenants will find loft-style office space with exquisite exposed ceilings and hardwood floors. While office suites vary, some include kitchenettes, glass conference rooms and more. 215 W Superior Street has windows on multiple sides for abundant natural light throughout the day.

The fantastic River North location puts tenants in the heart of the gallery district. The CTA "El" station is less than a block away; offering easy commuting to and from the office. Tenants will find abundant shopping and dining options within a short walk.





215 W SUPERIOR  
Chicago, Illinois

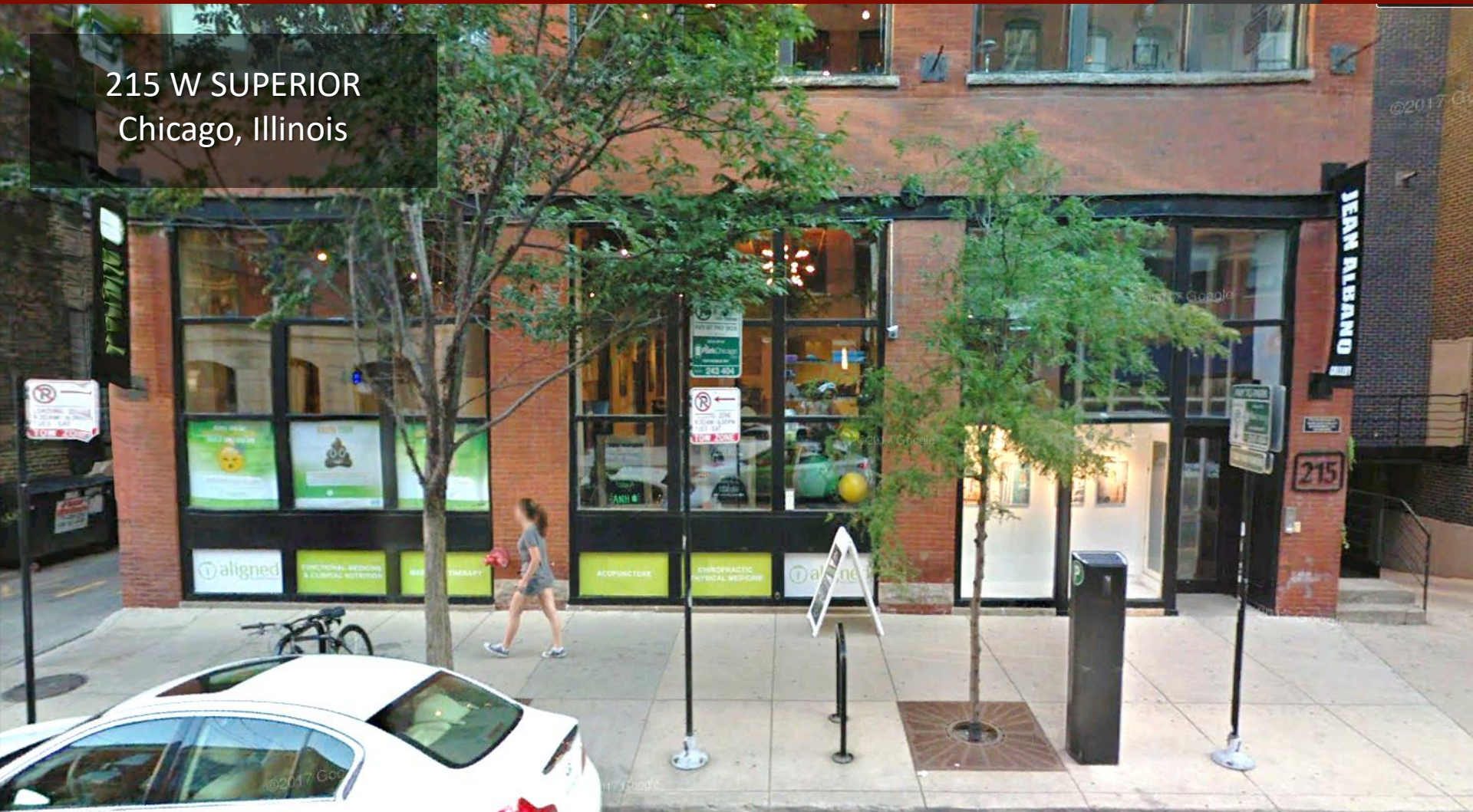




# RIVER NORTH OFFICE SPACE FOR LEASE

SENECA

215 W SUPERIOR  
Chicago, Illinois



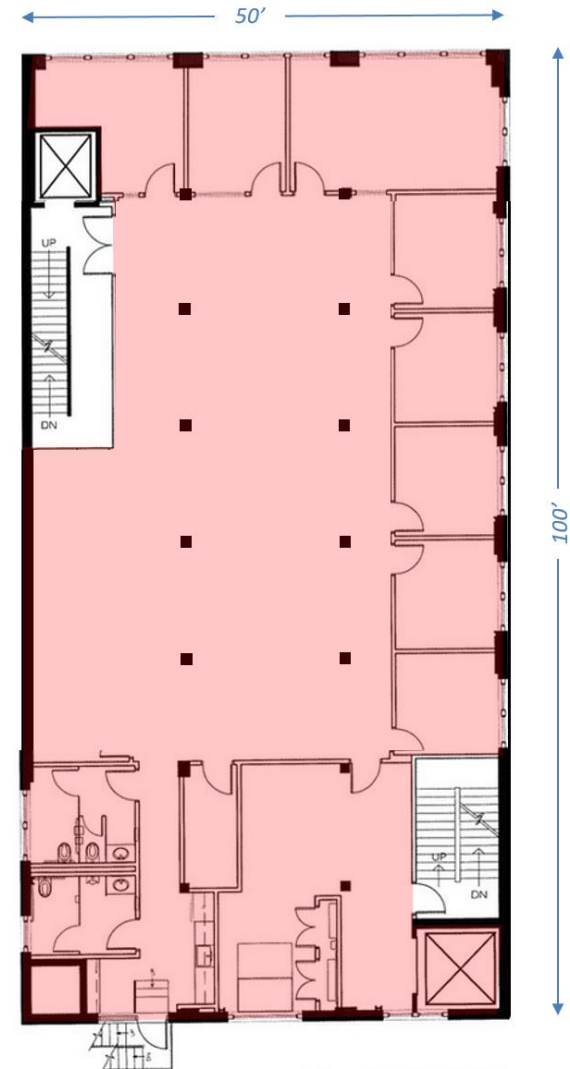


# RIVER NORTH OFFICE SPACE FOR LEASE

SENECA



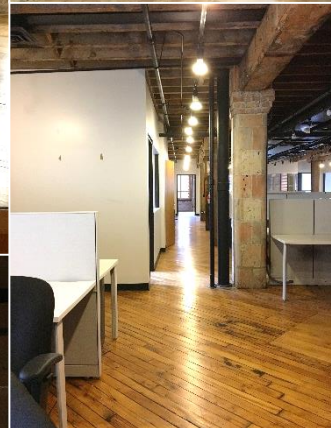
Suite 400: 5,000 RSF





# RIVER NORTH OFFICE SPACE FOR LEASE

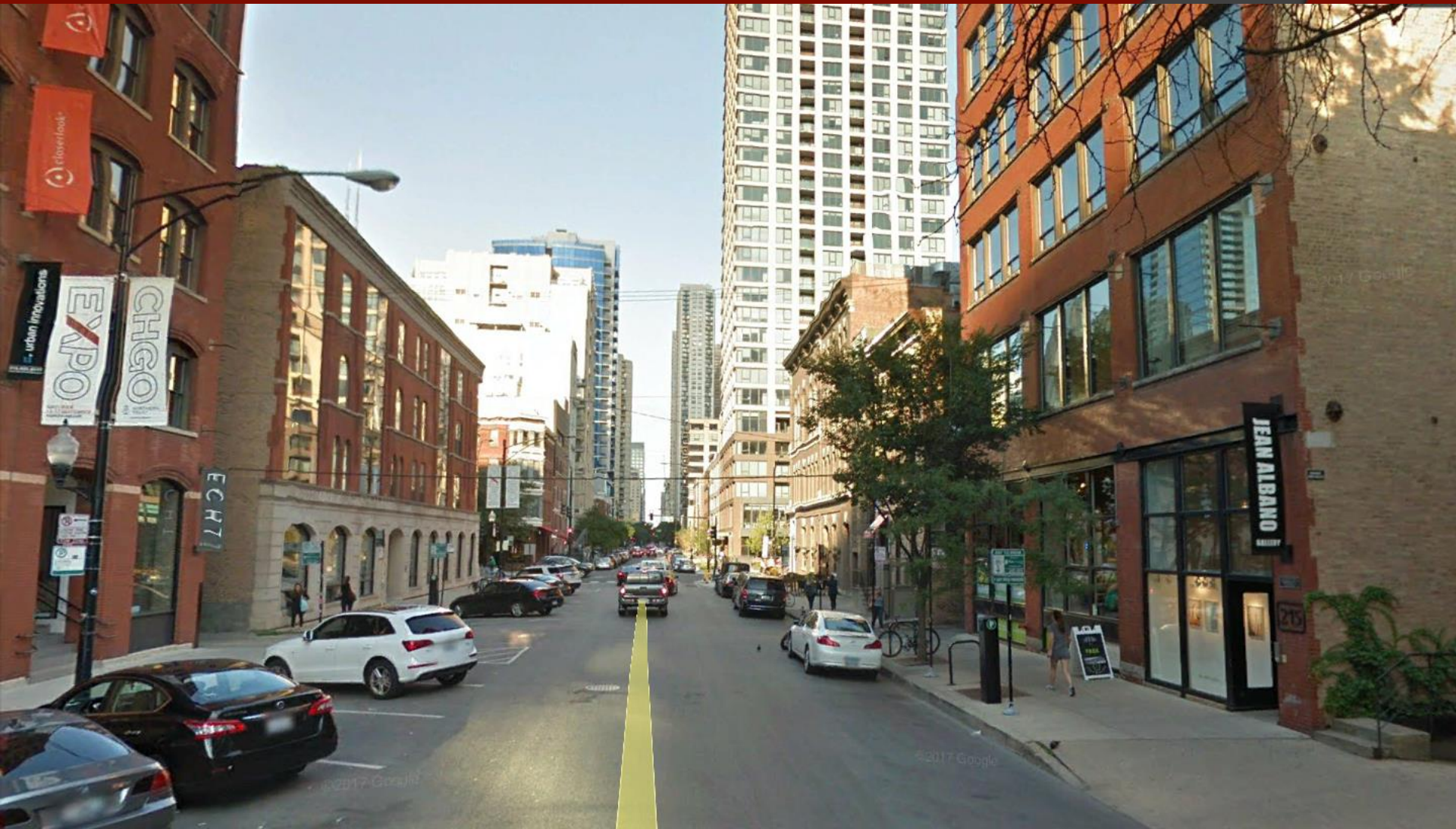
SENECA





# RIVER NORTH OFFICE SPACE FOR LEASE

SENECA





# RIVER NORTH OFFICE SPACE FOR LEASE

SENECA



Joe Padorr 312.316.2300

[jpadorr@seneca-re.com](mailto:jpadorr@seneca-re.com)