

# THE WABASH & 900 MAIN

OFFICE | RESTAURANT | RETAIL | EAST NASHVILLE



## THE WABASH BUILDING



## CLASS A OFFICE | RESTAURANT | RETAIL

The Wabash Building on Woodland Street and the expansion of the existing building at 900 Main brings Class A office space to East Nashville.

All within walking distance, the amenity rich block is home to the NY speakeasy **Attaboy** cocktail bar, **Butcher & Bee**, Nashville owned **Edley's BBQ**, the **Filling Station** and **Scout's Barbershop**.

- New, Class A Construction
- Convenient, central location within one mile of downtown Nashville and a half mile walk to Five Points
- On-site & street parking
- Building signage opportunities
- Full floor tenant availabilities as low as 5,000 SF per floor

## 900 MAIN



## THE WABASH BUILDING

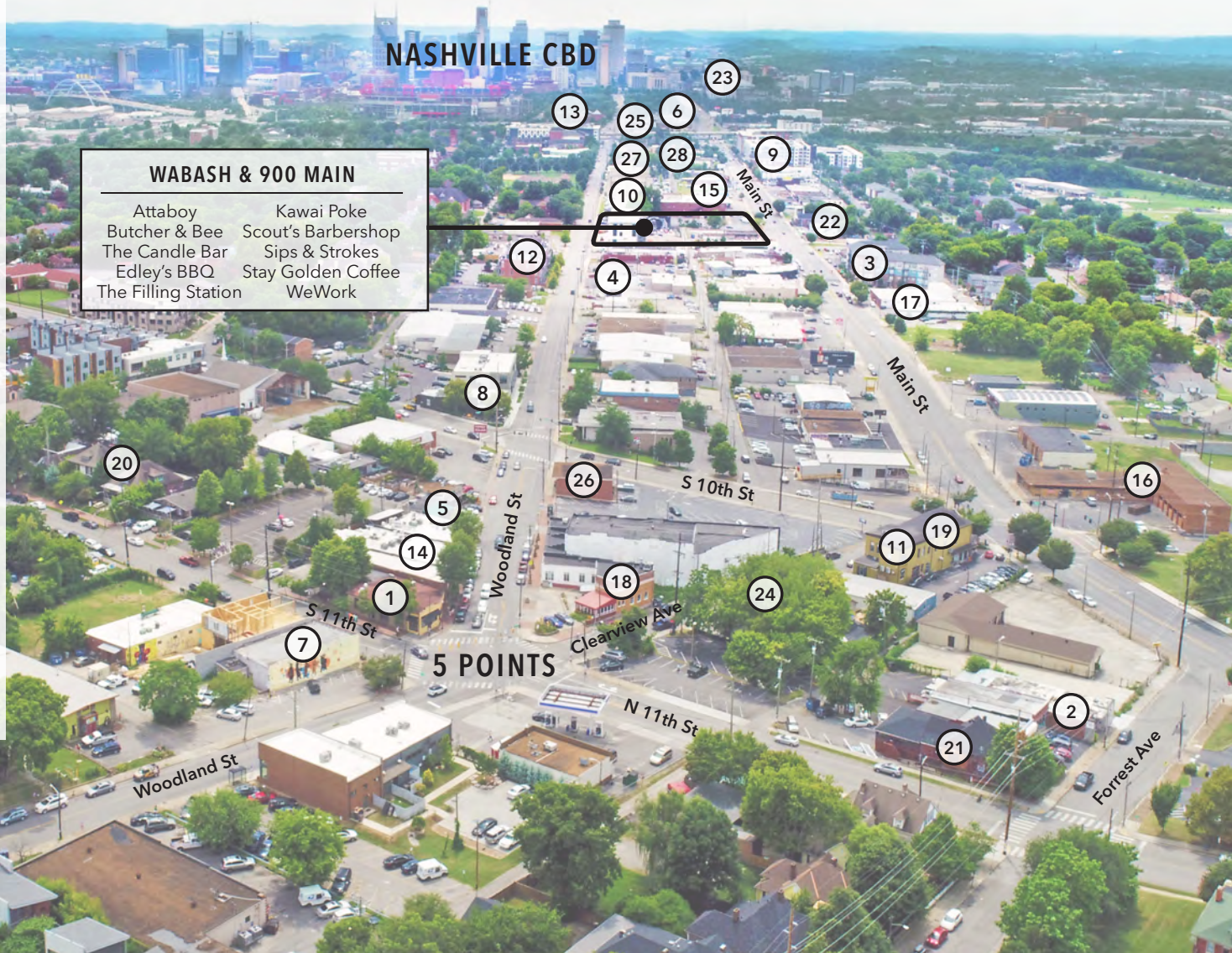
<b>Address</b>	901 Woodland St, Nashville, TN 37206
<b>Available</b>	5,467 SF   3,664 Contiguous
<b>Delivery</b>	Ready for tenant buildout

## 900 MAIN

<b>Address</b>	900 Main St, Nashville, TN 37206
<b>Available</b>	17,907 SF   20' Ceilings in Retail Space
<b>Delivery</b>	Q3 2018

## DINING | AMENITIES

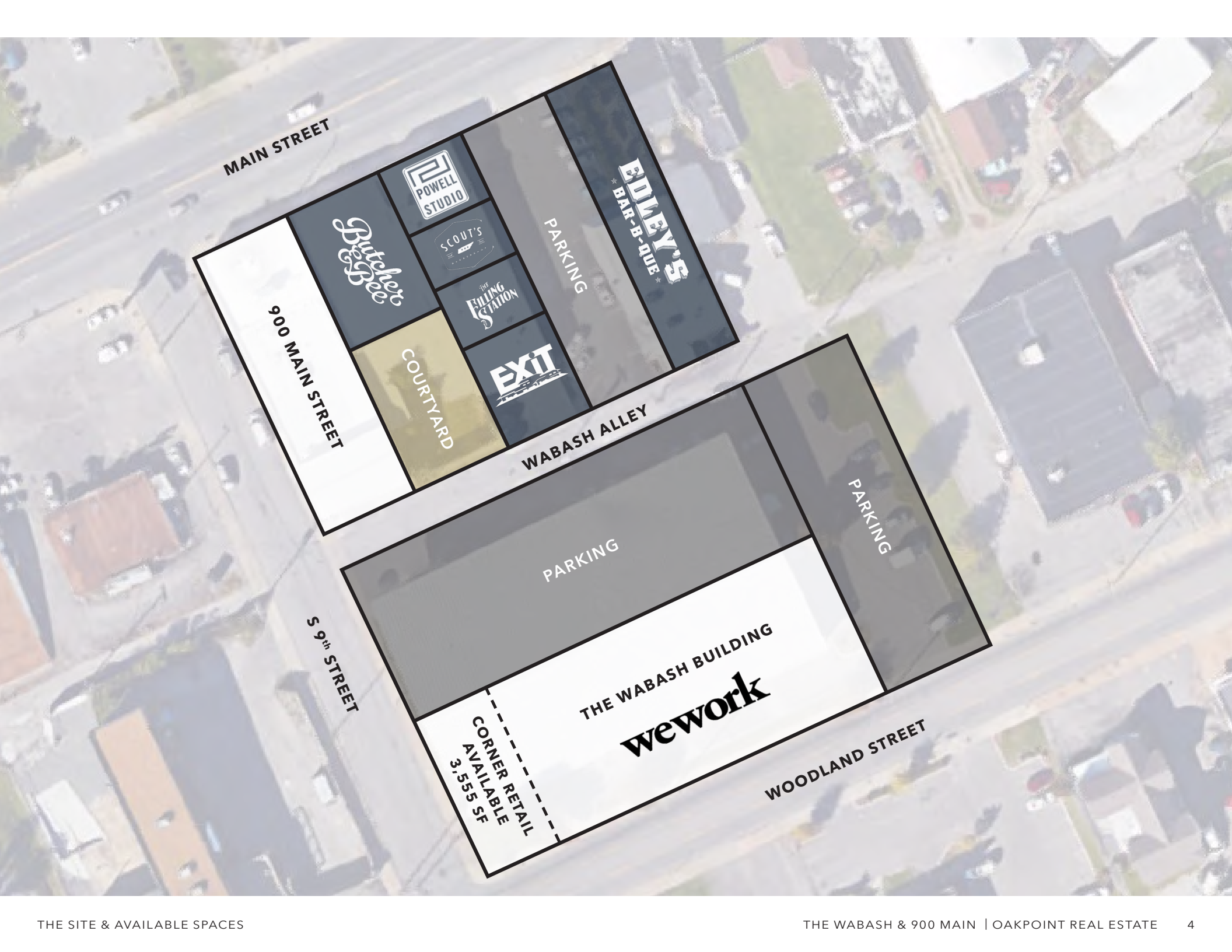
- ① 3 Crow Bar
- ② The 5 Spot
- ③ Amplify on Main Apartments
- ④ Basement East
- ⑤ Batter'd & Fried
- ⑥ Bolton's Spicy Chicken & Fish
- ⑦ Bongo East
- ⑧ Burger Up
- ⑨ Center 615
- ⑩ The Crying Wolf
- ⑪ Duke's Bar
- ⑫ East End Lofts
- ⑬ Eastside Heights Apartments
- ⑭ Five Points Pizza
- ⑮ Greko Greek
- ⑯ Hunters Station
- ⑰ Koi Sushi & Thai
- ⑱ Marché Artisan Foods
- ⑲ Margot
- ⑳ Pied Piper Creamery
- ㉑ Red Door Saloon
- ㉒ Smith & Lentz Brewing
- ㉓ Stacks on Main Apartments
- ㉔ The Treehouse
- ㉕ The Turnip Truck
- ㉖ Woodland Wine Merchant
- ㉗ Yeast Nashville
- ㉘ 626 Main Street - For Sale



**WABASH & 900 MAIN**

Attaboy	Kawai Poke
Butcher & Bee	Scout's Barbershop
The Candle Bar	Sips & Strokes
Edley's BBQ	Stay Golden Coffee
The Filling Station	WeWork





MAIN STREET

900 MAIN STREET

Butcher & Bee

POWELL STUDIO

SCOUT'S

THE FILING STATION

EXIT

COURTYARD

PARKING

EDLEY'S  
BAR-B-QUE

WABASH ALLEY

PARKING

PARKING

S 9<sup>th</sup> STREET

THE WABASH BUILDING

wework

CORNER RETAIL  
AVAILABLE  
3,555 SF

WOODLAND STREET



Woodland St

Kawai

wework

wework

wework

Solstice

Retail

Retail

Wiflwr

Stay Golden

Coffee Shop

Candle Bar

Retail

Sips n Strokes

Parking

Office

Retail

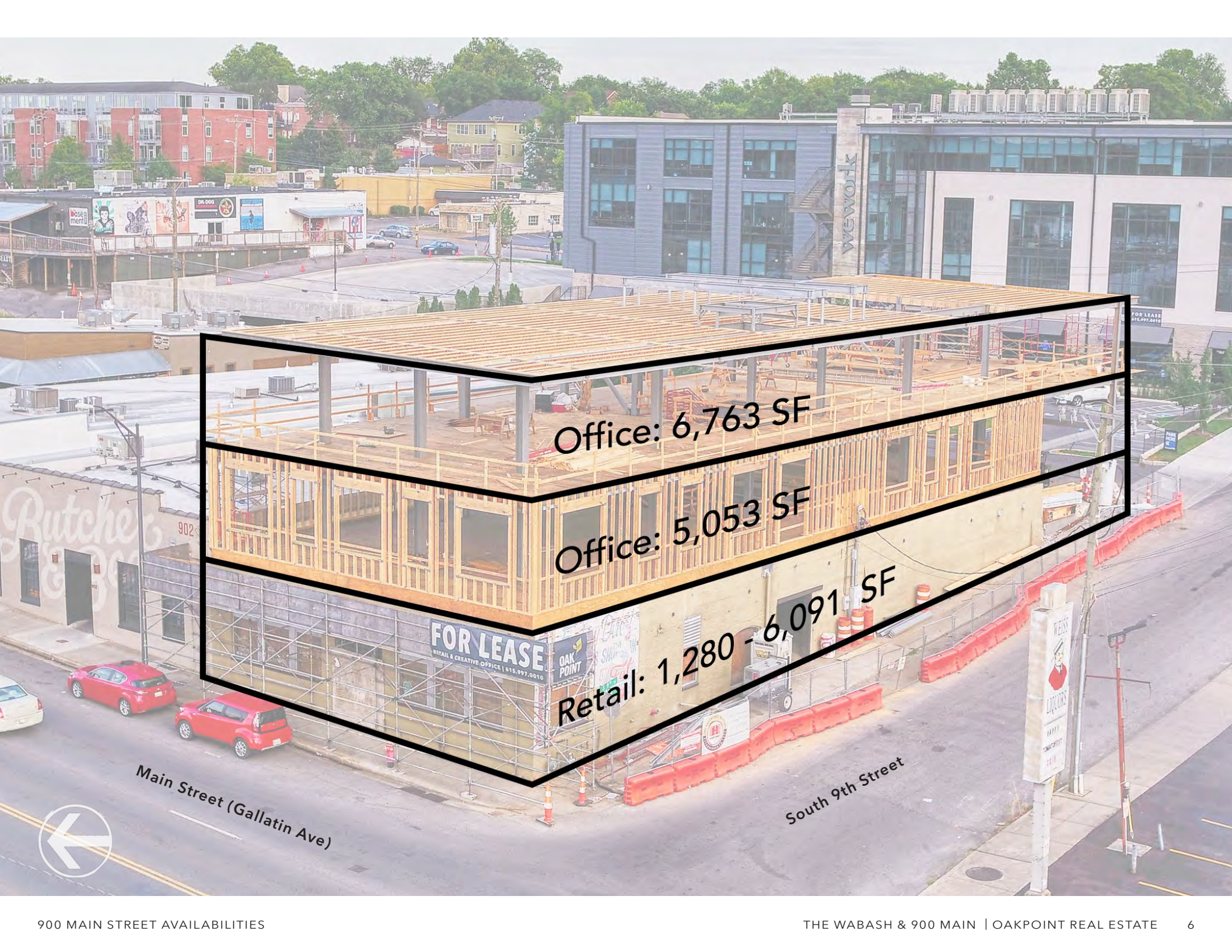
Office

Retail / Office

S 9th Street

Main Street





Office: 6,763 SF

Office: 5,053 SF

Retail: 1,280 - 6,091 SF

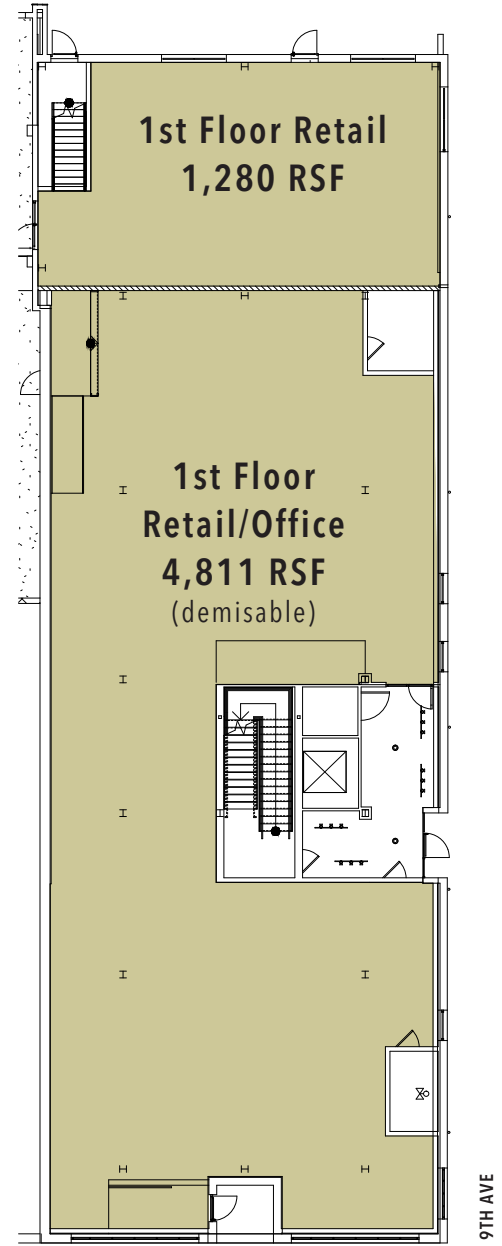
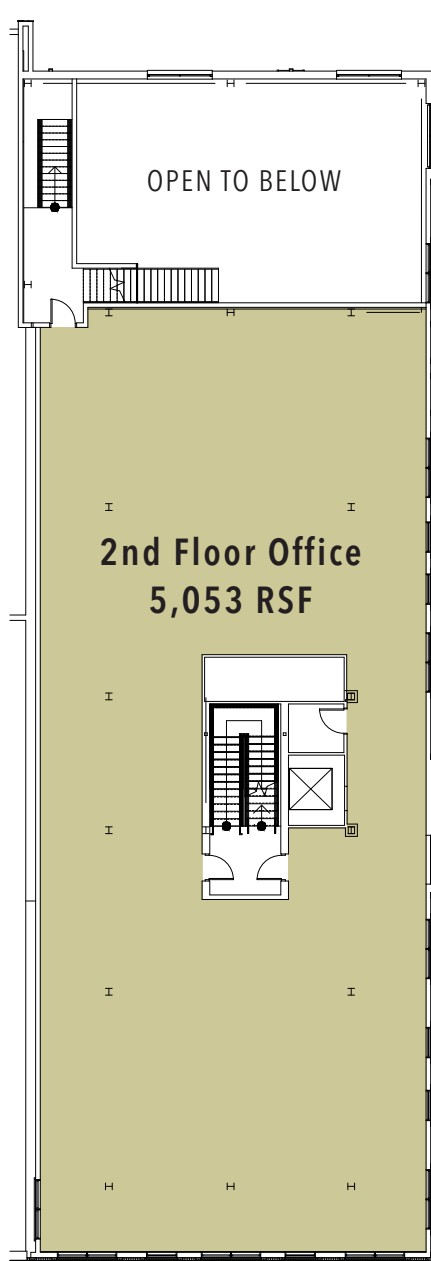
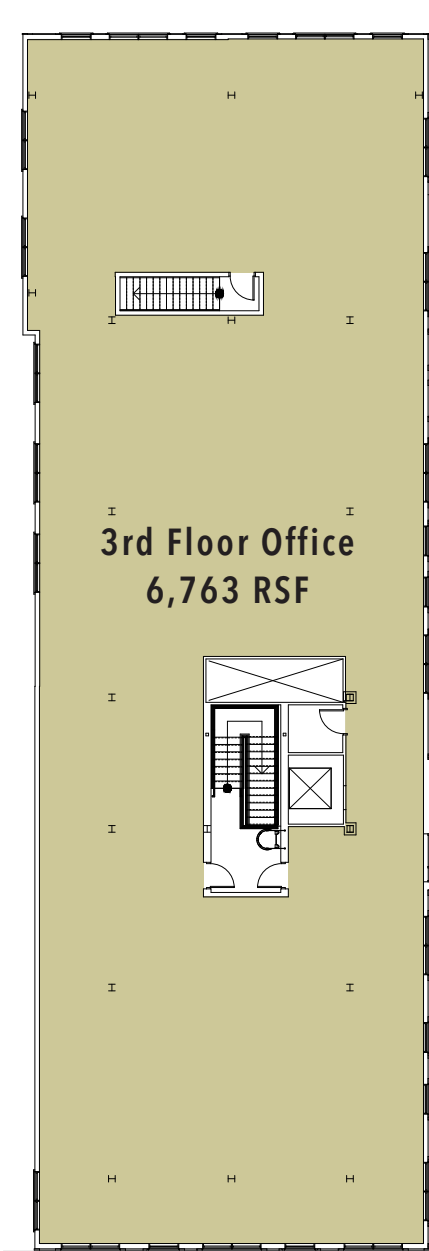
**FOR LEASE**  
RETAIL & CREATIVE OFFICE | 615.997.0010

Main Street (Gallatin Ave)

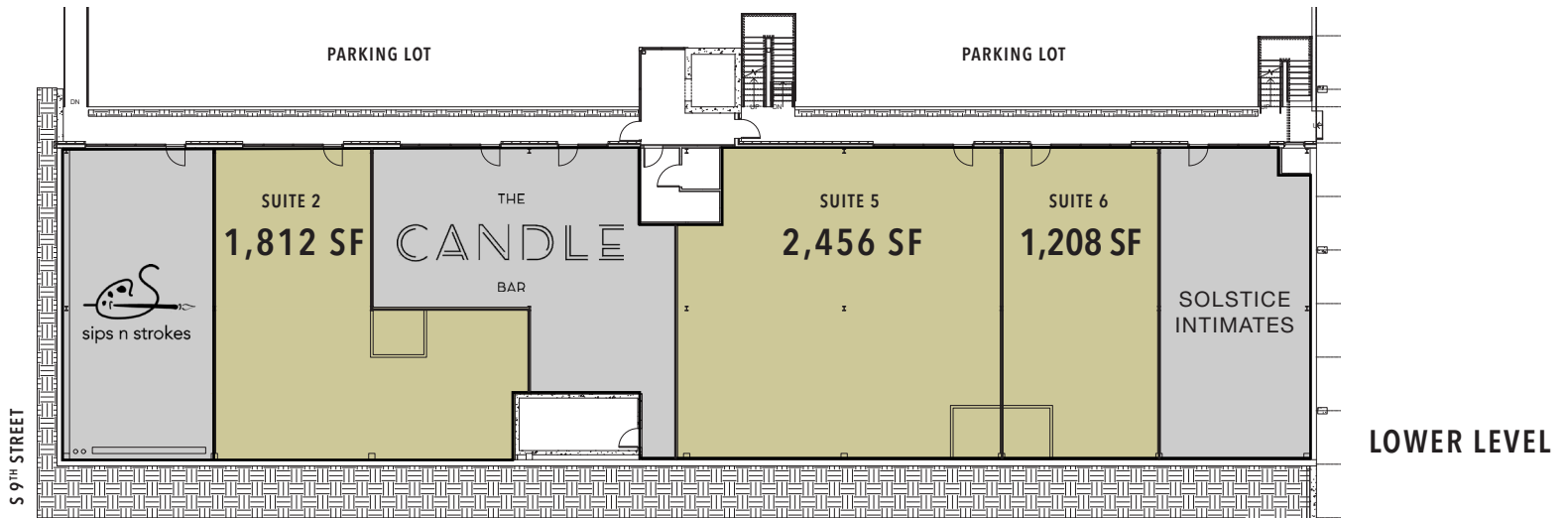
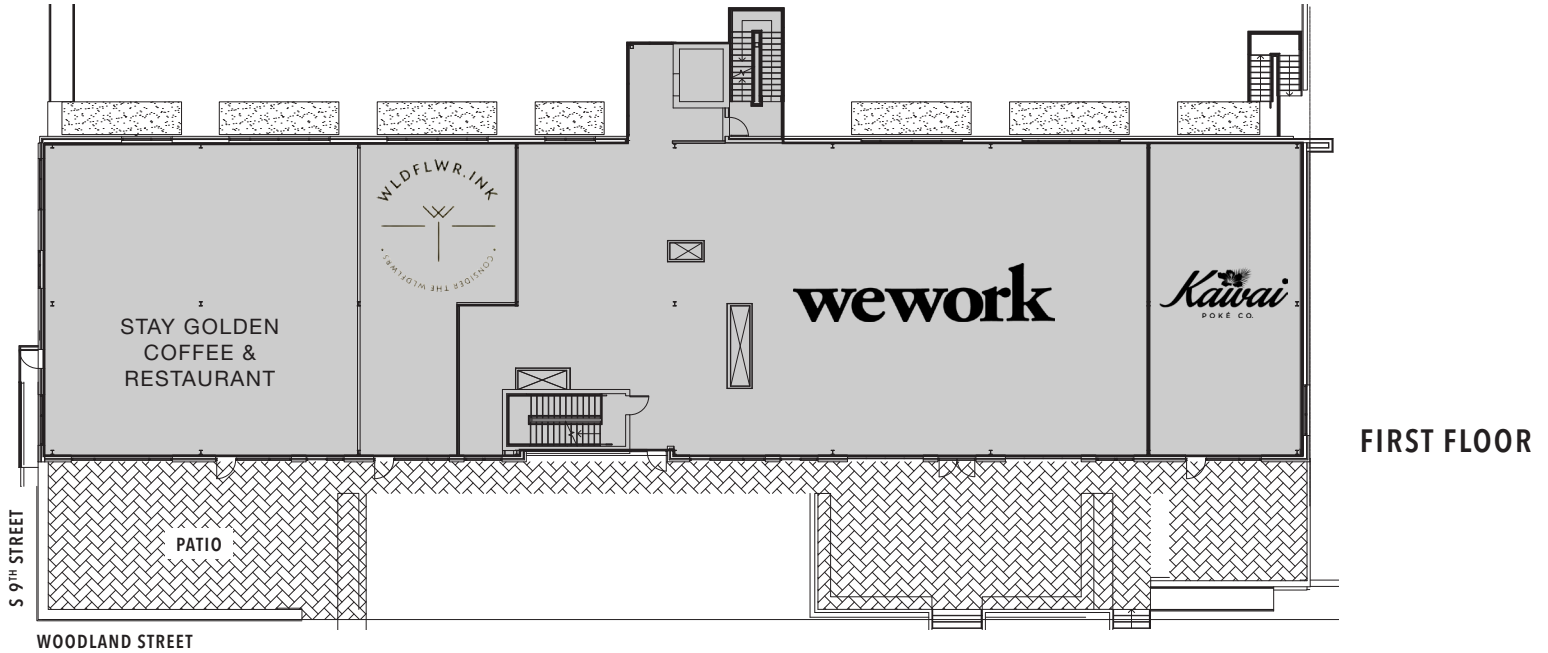
South 9th Street



# 900 MAIN AVAILABILITY



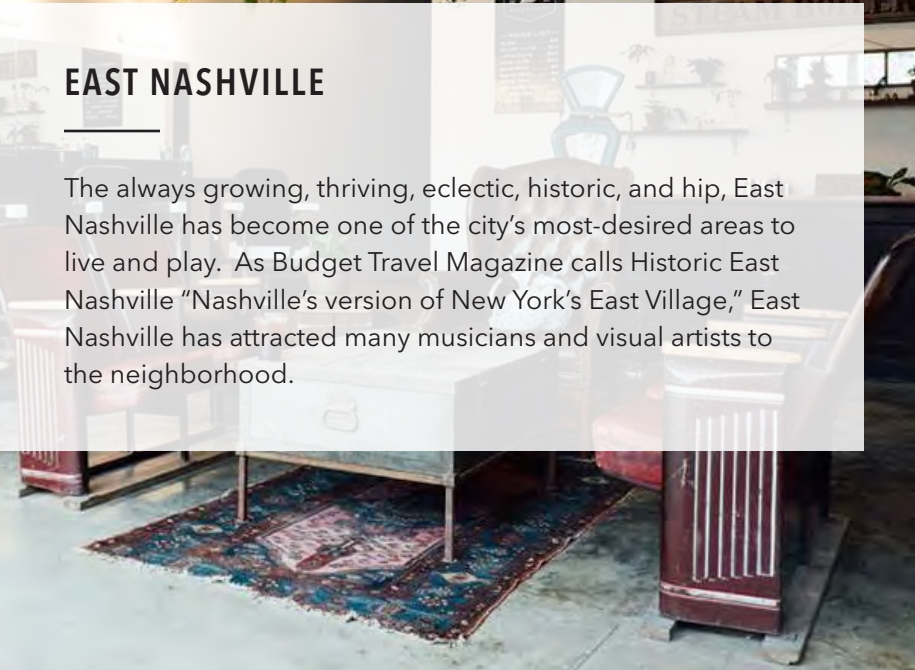
# THE WABASH AVAILABILITY





## EAST NASHVILLE

The always growing, thriving, eclectic, historic, and hip, East Nashville has become one of the city's most-desired areas to live and play. As Budget Travel Magazine calls Historic East Nashville "Nashville's version of New York's East Village," East Nashville has attracted many musicians and visual artists to the neighborhood.



# THE WABASH & 900 MAIN

---

OFFICE | RESTAURANT | RETAIL | EAST NASHVILLE

FOR FURTHER INFORMATION, CONTACT:

---

**JEREMIAH PYRON**

Advisory Services

(o) 615 324 0794

[jpyron@oakpointre.com](mailto:jpyron@oakpointre.com)

**TRENT YATES**

Advisory Services

(o) 615 324 0788

[tyates@oakpointre.com](mailto:tyates@oakpointre.com)