

60^{SO} MA

SO MUCH MORE.

60 SOUTH MARKET

CBRE



INTERCONTINENTAL
REAL ESTATE CORPORATION

An aerial photograph of a modern, multi-story office building with a light-colored facade and a grid of windows. The building is situated in an urban environment with other buildings, trees, and a street visible. In the background, a large, ornate building with domes and crosses is partially visible. The sky is clear and blue.

60 South Market, San Jose

±234,439 SF

15-story Class "A" office tower centrally located in downtown San Jose, CA.

From 2,529 SF - 17,972 SF Available

CBRE

Rooted in tradition but on the cusp of cutting-edge, downtown San Jose brings urban renewal to a new meaning. Prominently located in the fastest growing city in the nation, **60 SOMA** puts you at the center.



SO MUCH HERE.

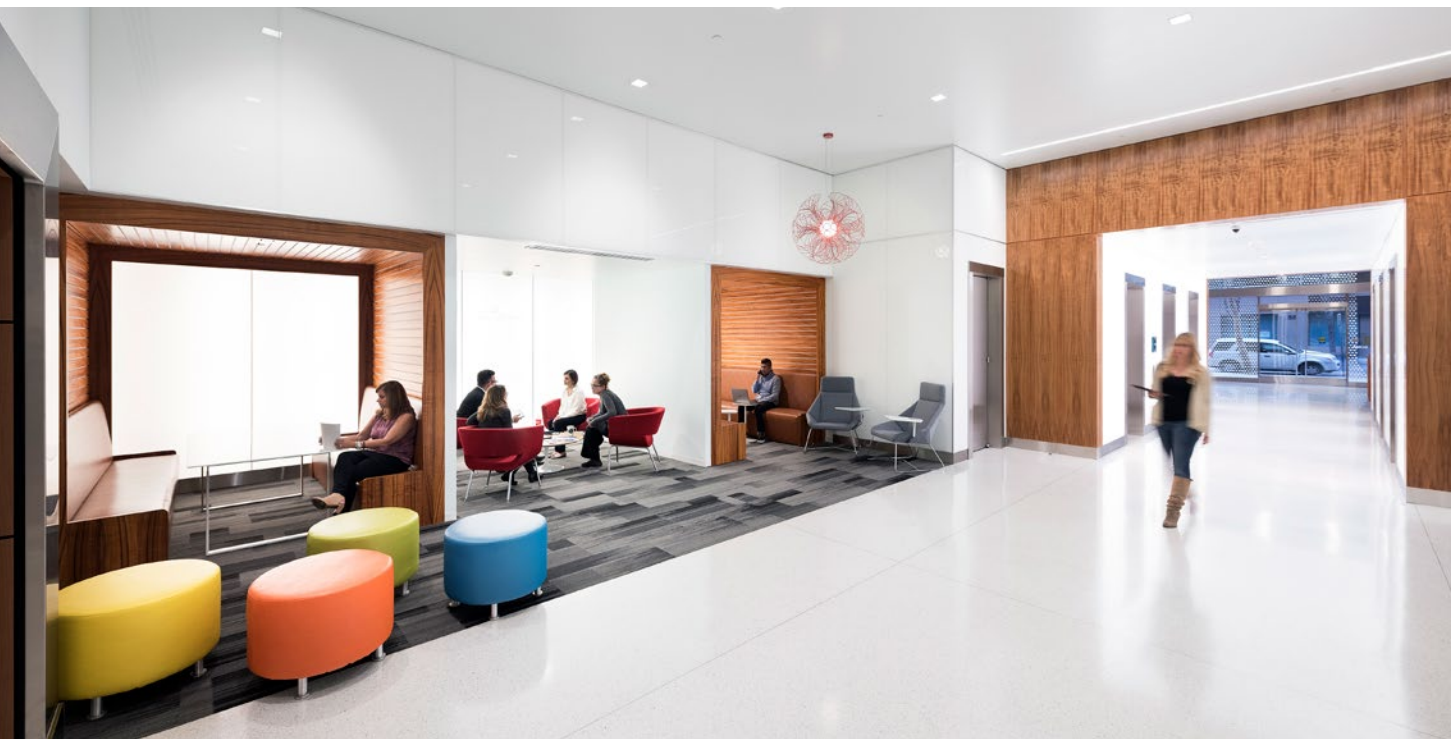
Everything you would expect from a Class A Office building, with so much more:

- Major building and lobby upgrades
- Beautiful, modern interiors
- On-site fitness center
- Large training room
- 3/1000 covered parking
- 24 hour security
- On-site property management
- Walking distance to dozens of amenities
- Easy access to Caltrain and VTA Light Rail
- Close to major freeways
- Elevator modernization underway including destination dispatch



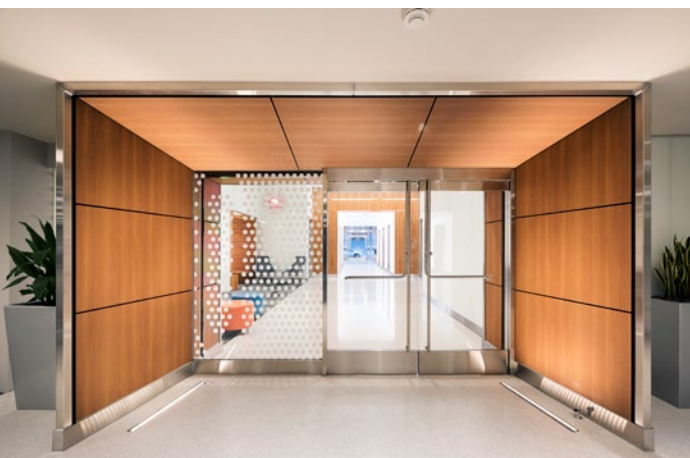
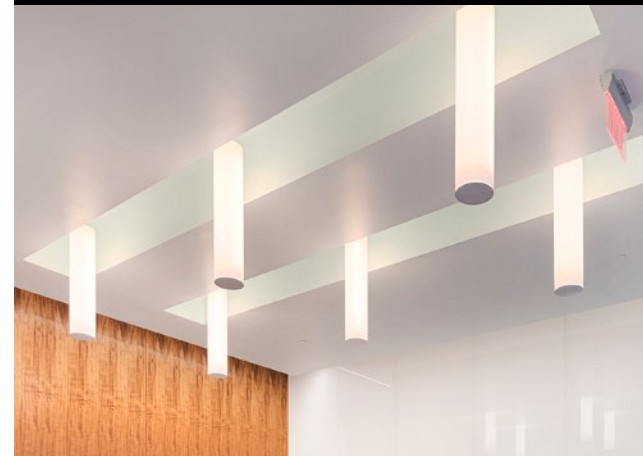
The **60 SOMA** transformation includes renovation of both entries to the main building lobby and the adjacent parking structure. Our innovative design includes the reuse of wood paneled walls in key areas, and the addition of new ceilings and lighting, back painted glass wall panels, rear illuminated LED wall panels, and new terrazzo flooring. Collaborative spaces in the lobby allow for spontaneous meetings by tenants and visitors to the building.

The redesign of the main building lobby extends outside onto Market Street, with new exterior lighting of the building focused on the three story tall arcade which has been re-clad with new white back painted glass panels. Large format graphics, a pedestrian scale entry portal and planters further enhance the new entry sequence into the building.



60SO
MA

SO COOL!



60 SOUTH MARKET STREET | SAN JOSE, CA

CBRE



60 SOUTH MARKET STREET | SAN JOSE, CA

! SEE

1. San Pedro Square Market
2. SAP Center
3. McEnery Convention Center
4. The Tech Museum

🏠 STAY

5. The Fairmont Hotel
6. The DeAnza Hotel
7. Hilton San Jose
8. San Jose Marriott

🍴 EAT & DRINK

9. San Pedro Bistro & Wine Bar
10. Zanottos
11. Nemea
12. Cream
13. Original Gravity Public House
14. Gordon Biersch
15. Safeway
16. La Victoria
17. Starbucks
18. Nick the Greek
19. Peet's
20. Sonoma Chicken Coop
21. Specialty's Cafe & Bakery
- (4) Grill on the Alley
- (5) La Pastaia

💰 BANK

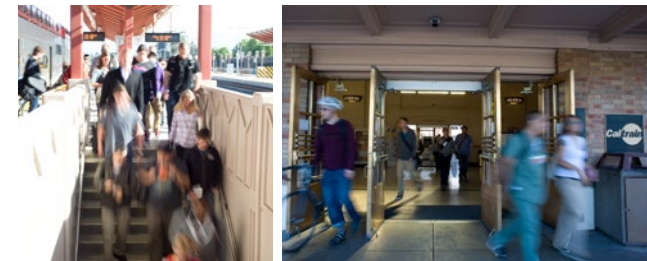
22. Bank
23. Umpqua
24. Bank of America

--- LIGHT RAIL

🚲 BIKE SHARE

60 SO MA

SO CONVENIENT



CBRE

60 SO MA

AVAILABLE SUITES:

60 S. MARKET STREET

Suite 300*	±10,972 RSF	Market Ready
Suite 310*	±6,632 RSF	Available 10/1/18
Suite 480	±2,529 RSF	Available 11/12/18
Suite 800	±17,972 RSF	Available 10/1/18 Full Floor
Suite 1150	±4,354 RSF	Market Ready
Suite 1500	±4,675 RSF	Market Ready
Total	±47,134 RSF	

* 300/310 can be combined for a whole floor



SO FITTING!

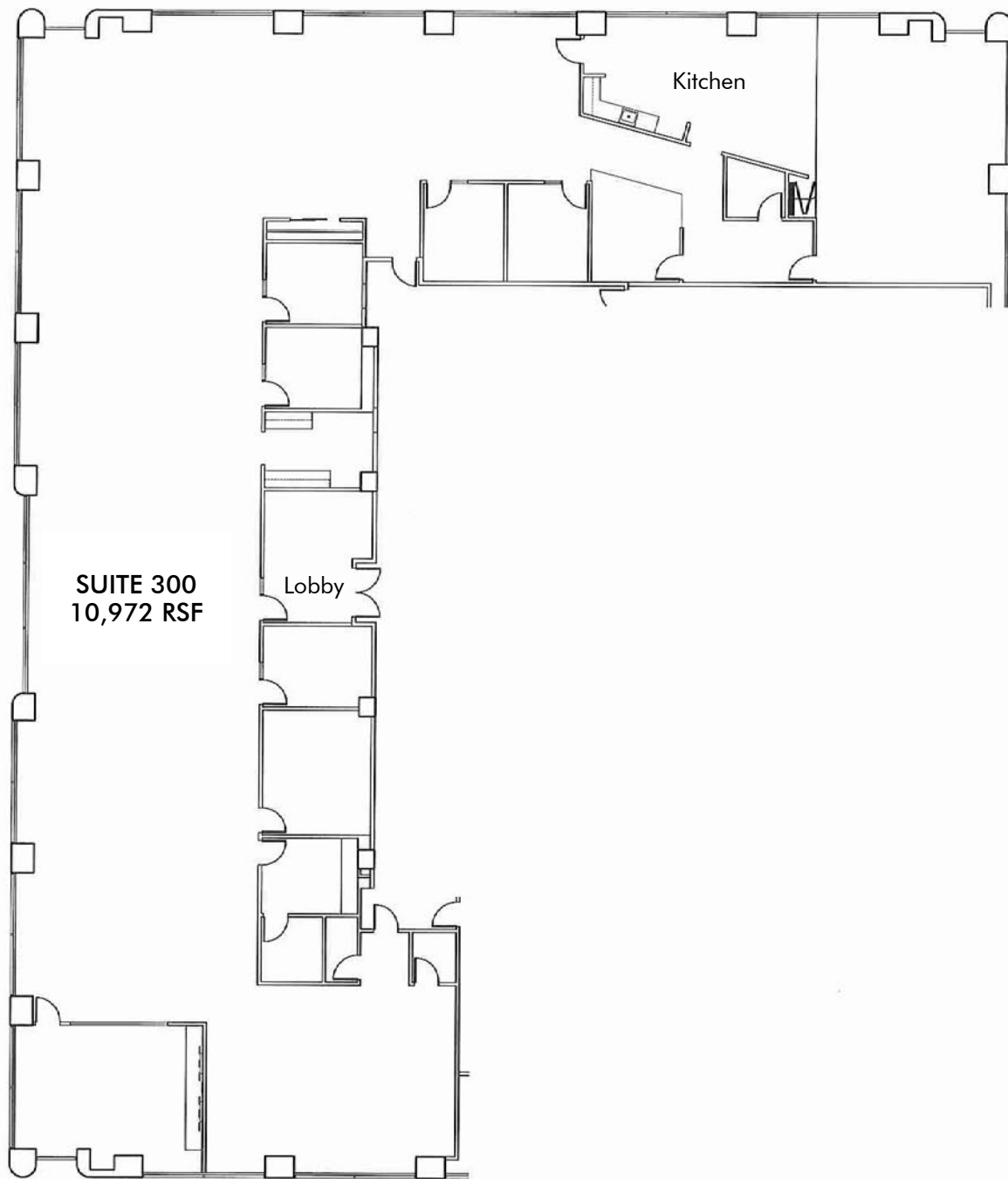
We have several size suites to accommodate your company's needs, with room to grow!



FOR MORE INFORMATION, PLEASE CONTACT:

JEFF HOUSTON
Vice Chairman
Lic. 00993274
+1 408 453 7497
jeff.houston@cbre.com

VINCENT SCOTT
Senior Vice President
Lic. 01833636
+1 408 453 7433
vincent.scott@cbre.com



60SO
MA

SUITE 300

±10,972 SF
Market Ready

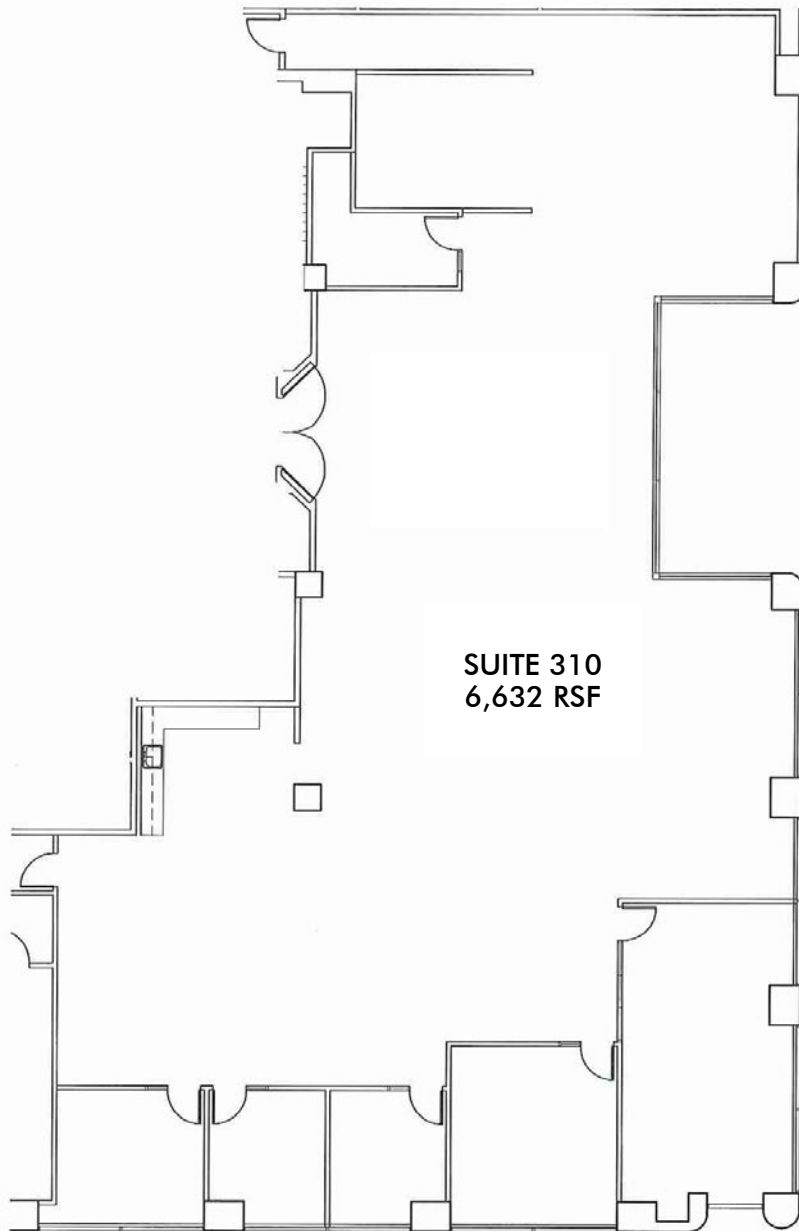
FOR MORE INFORMATION, PLEASE CONTACT:

JEFF HOUSTON

Vice Chairman
Lic. 00993274
+1 408 453 7497
jeff.houston@cbre.com

VINCENT SCOTT

Senior Vice President
Lic. 01833636
+1 408 453 7433
vincent.scott@cbre.com



60SO
MA

SUITE 310

±6,632 SF

Available 10/1/18

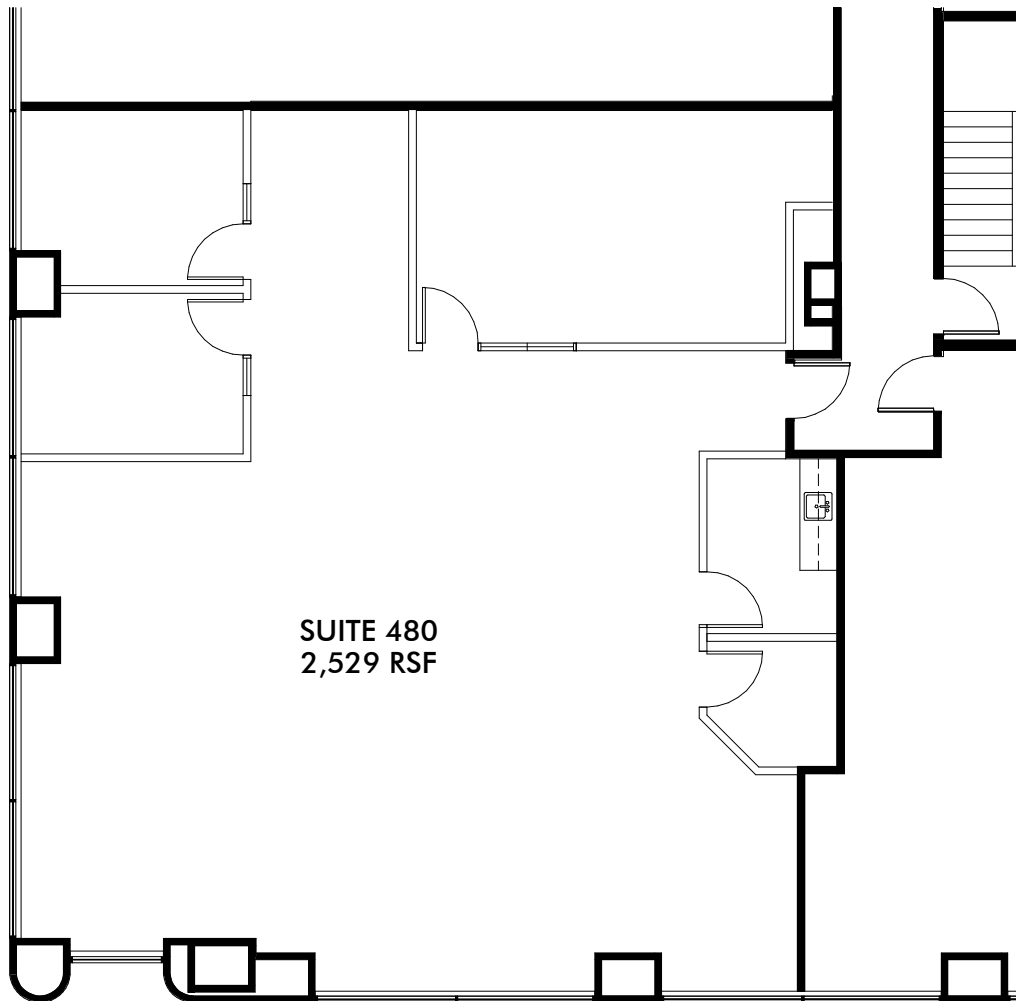
FOR MORE INFORMATION, PLEASE CONTACT:

JEFF HOUSTON

Vice Chairman
Lic. 00993274
+1 408 453 7497
jeff.houston@cbre.com

VINCENT SCOTT

Senior Vice President
Lic. 01833636
+1 408 453 7433
vincent.scott@cbre.com



SUITE 480
2,529 RSF

60SO
MA

SUITE 480

±2,529 SF

Available 11/11/18

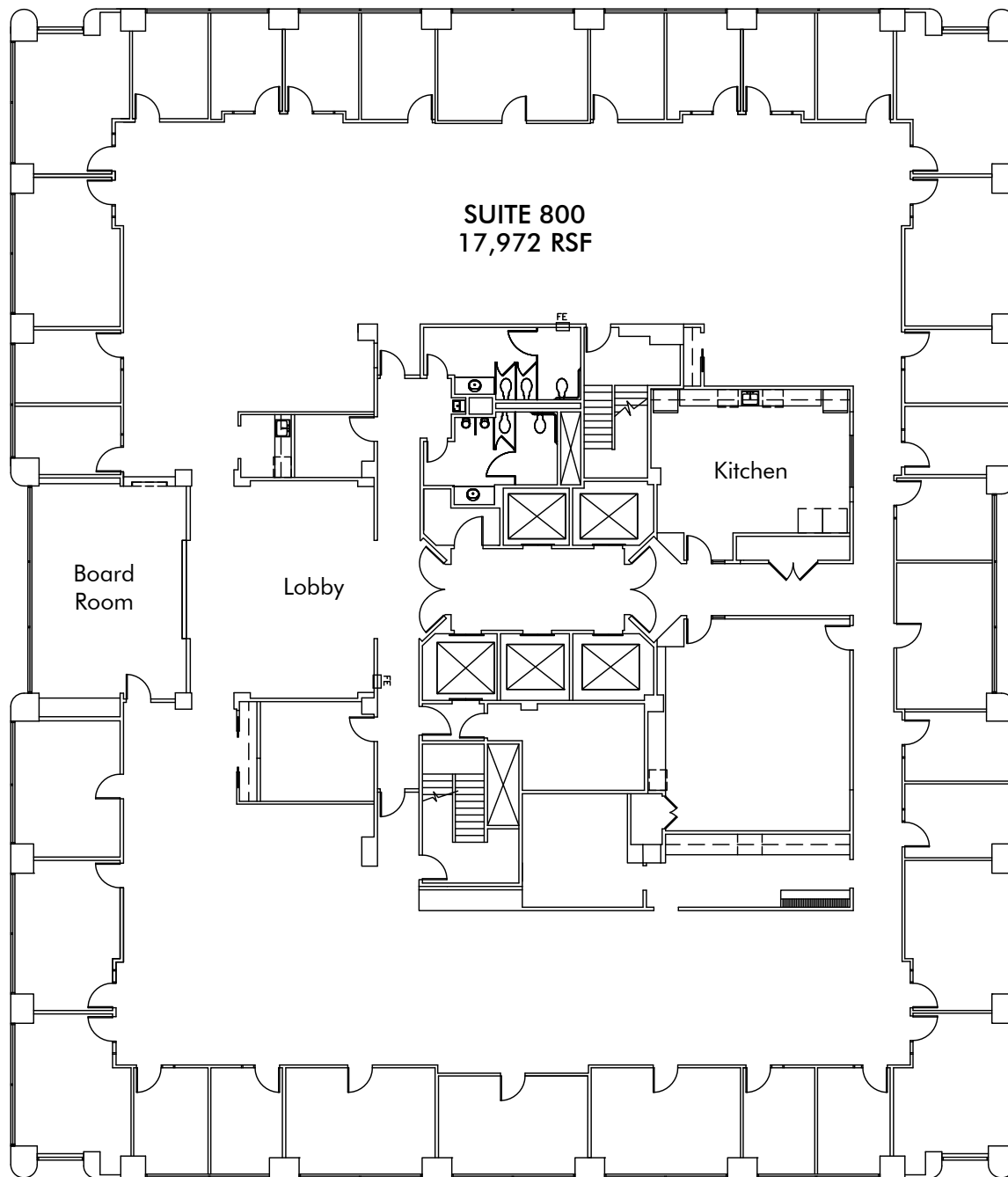
FOR MORE INFORMATION, PLEASE CONTACT:

JEFF HOUSTON

Vice Chairman
Lic. 00993274
+1 408 453 7497
jeff.houston@cbre.com

VINCENT SCOTT

Senior Vice President
Lic. 01833636
+1 408 453 7433
vincent.scott@cbre.com



60SO
MA

SUITE 800

± 17,972 SF
Available 10/1/18
Full Floor

FOR MORE INFORMATION, PLEASE CONTACT:

JEFF HOUSTON

Vice Chairman
Lic. 00993274
+1 408 453 7497
jeff.houston@cbre.com

VINCENT SCOTT

Senior Vice President
Lic. 01833636
+1 408 453 7433
vincent.scott@cbre.com

60SO
MA

SUITE 1150

±4,354 SF
Market Ready

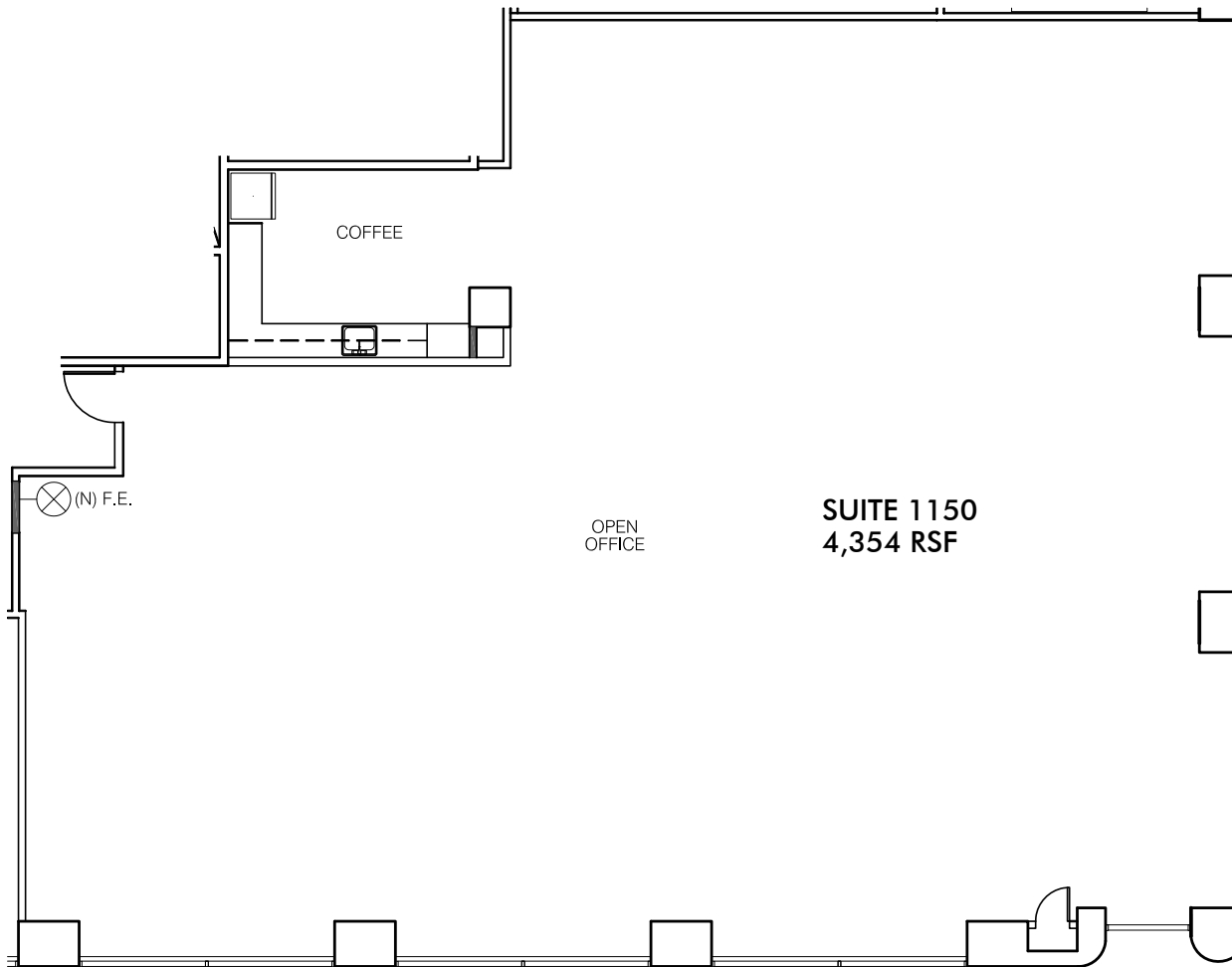
FOR MORE INFORMATION, PLEASE CONTACT:

JEFF HOUSTON

Vice Chairman
Lic. 00993274
+1 408 453 7497
jeff.houston@cbre.com

VINCENT SCOTT

Senior Vice President
Lic. 01833636
+1 408 453 7433
vincent.scott@cbre.com

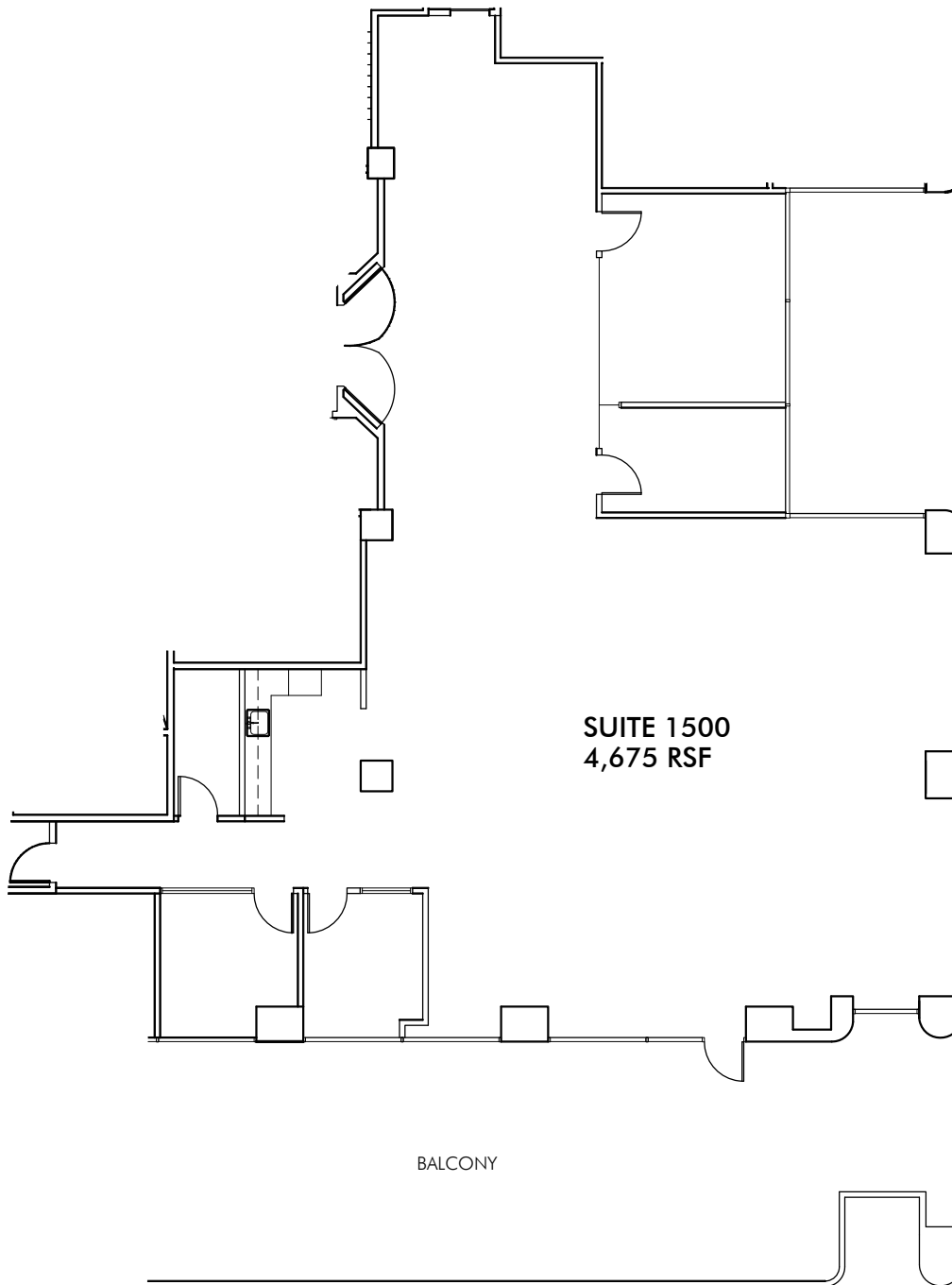


SUITE 1150
4,354 RSF

OPEN
OFFICE

COFFEE

(N) F.E.



60SO
MA

SUITE 1500

±4,675 SF
Market Ready

FOR MORE INFORMATION, PLEASE CONTACT:

JEFF HOUSTON

Vice Chairman
Lic. 00993274
+1 408 453 7497
jeff.houston@cbre.com

VINCENT SCOTT

Senior Vice President
Lic. 01833636
+1 408 453 7433
vincent.scott@cbre.com

60 SO MA

60 SOUTH MARKET STREET
SAN JOSE, CALIFORNIA

SO
MUCH
MORE.

CBRE



INTERCONTINENTAL
REAL ESTATE CORPORATION

FOR MORE INFORMATION, PLEASE CONTACT:

JEFF HOUSTON

Vice Chairman
Lic. 00993274
+1 408 453 7497
jeff.houston@cbre.com

VINCENT SCOTT

Senior Vice President
Lic. 01833636
+1 408 453 7433
vincent.scott@cbre.com



© 2018 CBRE, Inc. All rights reserved. This information has been obtained from sources believed reliable, but has not been verified for accuracy or completeness. You should conduct a careful, independent investigation of the property and verify all information. Any reliance on this information is solely at your own risk. CBRE and the CBRE logo are service marks of CBRE, Inc. All other marks displayed on this document are the property of their respective owners. Photos herein are the property of their respective owners. Use of these images without the express written consent of the owner is prohibited.