



**MILL CREEK COVE SUBDIVISION**  
*2330 SUNSET HARBOR ROAD*  
*BOLIVIA, NC*

# EXECUTIVE SUMMARY

## MILL CREEK COVE SUBDIVISION



### GENERAL OVERVIEW:

Mill Creek Cove is a creek-front residential subdivision in central Brunswick County, NC. The project consists of roughly 171 acres and has been developed with 292 single-family residential lots, amenities (pool, clubhouse, tennis courts, fitness center, etc.), and a future multifamily phase that is approved for 96 units that is self contained and served with its own amenity package. The subdivision abuts Mill Creek, and many of the lots have marsh and creek views.

### PROPERTY DESCRIPTION:

**Address:** **Mill Creek Cove Subdivision**  
2330 Sunset Harbour Road  
Bolivia, NC

**Available:**

- 208 Single-Family Residential Lots
- 14.5 acres of land

**Zoning:** R-7500 (PUD)

**Minimum Home Sq. Ft.:** 1500 Heated Square Feet

**Location:** Mill Creek Cove is located off the Hwy 211 corridor in Bolivia, Brunswick County, NC. It lies in close proximity to the beaches of Oak Island and is less than 15 minutes to the west of Southport.

**Sales Price and Terms:** Please Inquire. Seller would consider bulk sale or a builder lot takedown.



# LOCATION MAP

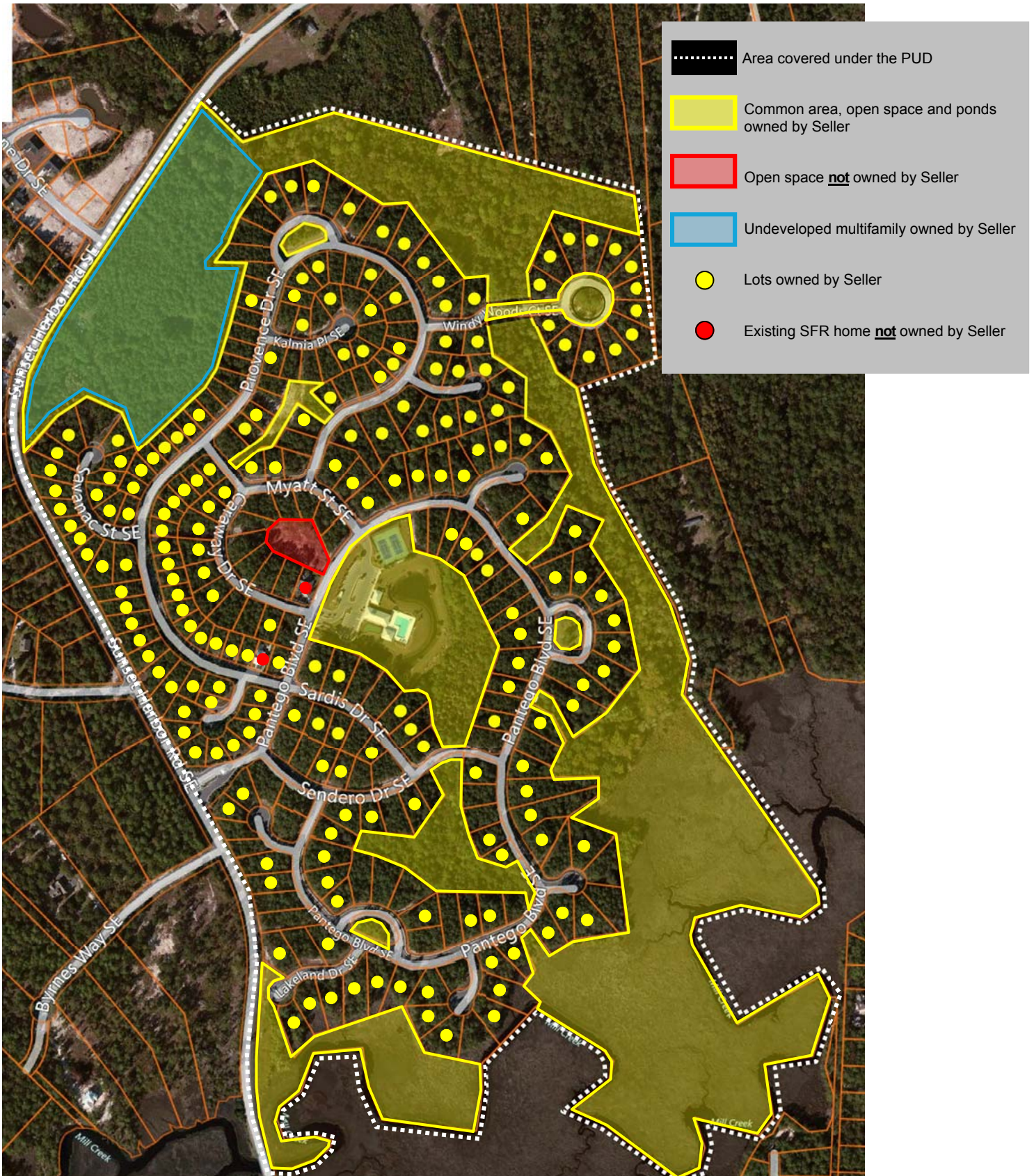
## MILL CREEK COVE SUBDIVISION





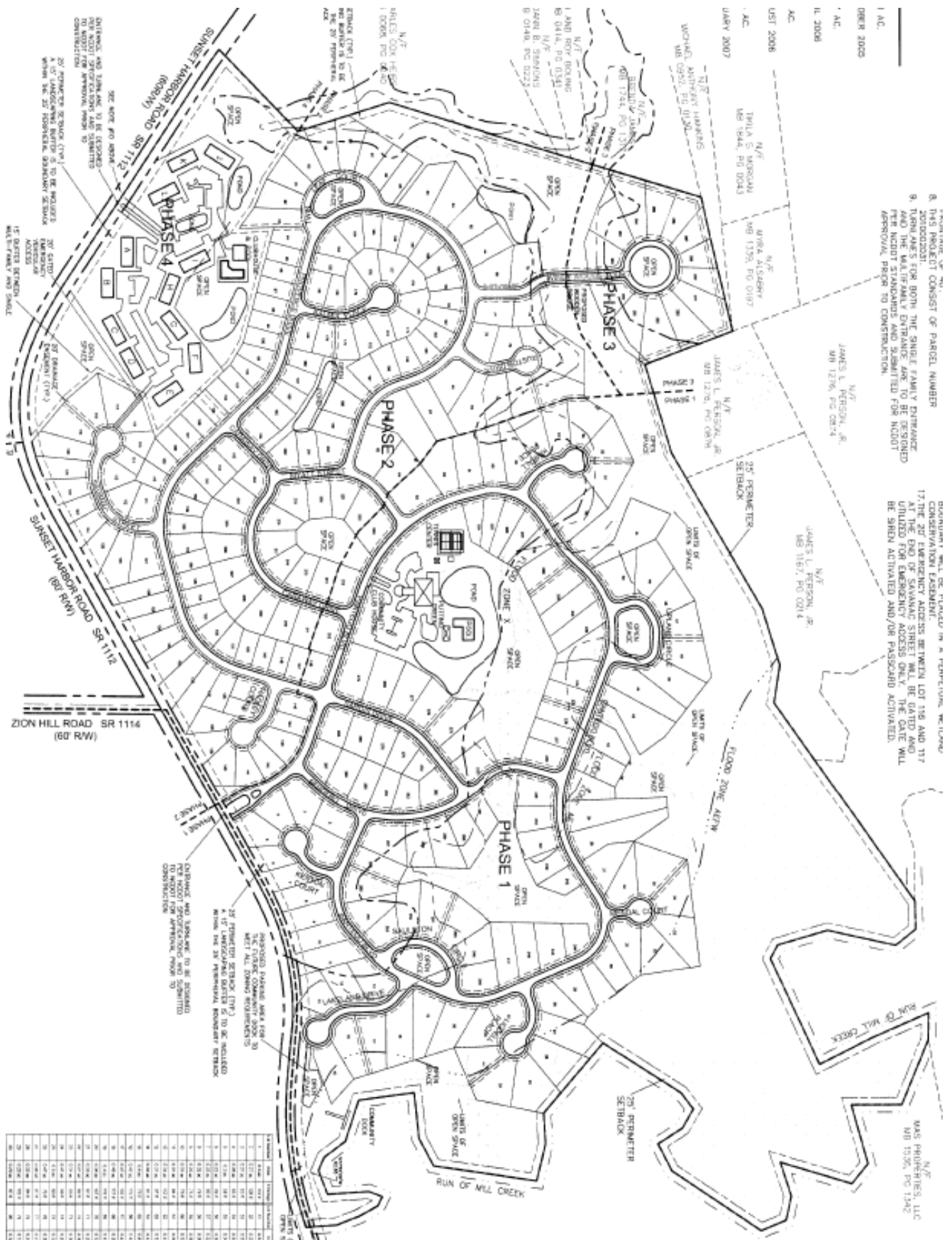
# DETAILED AERIAL

## MILL CREEK COVE SUBDIVISION





*MILL CREEK COVE SUBDIVISION*



# PROPERTY IMAGES

## *MILL CREEK COVE SUBDIVISION*





# PROPERTY IMAGES

## MILL CREEK COVE SUBDIVISION



# PROPERTY IMAGES

## MILL CREEK COVE SUBDIVISION





---

## ***CONTACT INFORMATION***

---

Curtis Dukes, Broker  
Blue Strand Properties, LLC  
1006 6th Avenue South, Suite  
North Myrtle Beach, SC 29582  
CurtisDukes@icloud.com  
(843) 796-0345 Office  
(828) 217-2084 Mobile  
(843) 371-1618 Fax