

Below Market South Park Sublease



665 THIRD ST
San Francisco, CA

SUBLEASE DETAIL:

- Partial 4th Floor - 9,362 RSF
- Available June 1, 2018
- Rate: Inquire with Broker

FEATURES:

- Term Thru 8/31/2022
- Open plan with exposed concrete ceilings
- 75 Workstations available with room for more
- 8 Conference Rooms, 2 Phone Rooms
- Great Natural Light
- Large Open Kitchen

For more information contact:

Ivan Chavez

415.617.9656

ichavez@savills-studley.com

License 01974498

Savills Studley

150 California Street,

14th Floor

San Francisco, CA 94111

All information furnished regarding either the property for sale, rental or financing is from sources deemed reliable. No representation is made as to the accuracy thereof and it is submitted subject to errors, change of price, rental rates or other conditions, prior sale, lease or financing, or withdrawal without notice.

665 THIRD ST

San Francisco, CA

SUBLEASE



savills
Studley

For more information contact:

Ivan Chavez
415.617.9656
ichavez@savills-studley.com
License 01974498

Savills Studley
150 California Street,
14th Floor
San Francisco, CA 94111

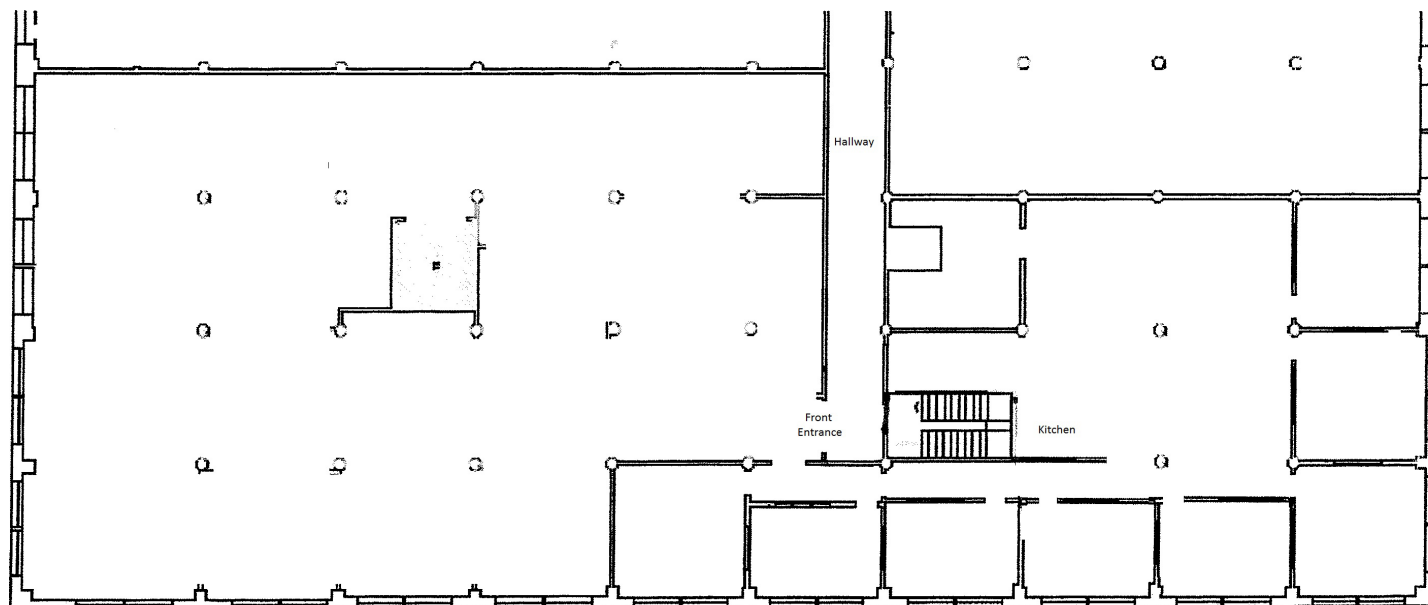
All information furnished regarding either the property for sale, rental or financing is from sources deemed reliable. No representation is made as to the accuracy thereof and it is submitted subject to errors, change of price, rental rates or other conditions, prior sale, lease or financing, or withdrawal without notice.

665 THIRD ST

San Francisco, CA

SUBLEASE

4th Floor - Suite 400



For more information contact:

Ivan Chavez

415.617.9656

ichavez@savills-studley.com

License 01974498

Savills Studley

150 California Street,

14th Floor

San Francisco, CA 94111

All information furnished regarding either the property for sale, rental or financing is from sources deemed reliable. No representation is made as to the accuracy thereof and it is submitted subject to errors, change of price, rental rates or other conditions, prior sale, lease or financing, or withdrawal without notice.