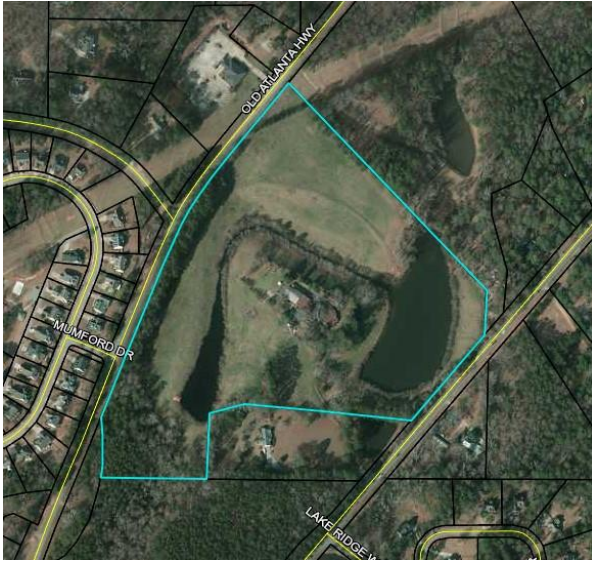


SALES, LEASES, RESIDENTIAL, COMMERCIAL, FARMS & LANDS

14 JACKSON STREET
NEWNAN, GEORGIA 30263
SINCE 1948

TELEPHONES:
NEWNAN - (770) 253-6990
FAX - (770) 253-6843
WEBSITE -
www.LindseysRealtors.com



See Drone Tour at:

<https://vimeo.com/262686936/bfce005276>

MORTGAGES: **None**

TERMS: **Cash, Conventional Loan**

IMPROVEMENTS: **2,320+/- s/f home in need of repair. 2,485+/- s/f home / party building in need of repair. 23x50 mobile home in need of repair. Triple garage w/electricity. 16x32 in-ground pool in need of repair, but, all sold 'as is' with no repairs by Sellers.**

OTHER: **Two stocked ponds on property connected by canal. Open pasture land. Ideal for residential development. City sewer & city water possible with annexation. Frontage on Hwy 29N and Old Atlanta Hwy. Commercial Potential w/high traffic count. Excellent location for church or recreational use. Wells and septic tanks on property. County water available. Near Newnan Country Club. Easy access to I-85.**

DIRECTIONS: **From I-85S, Exit 47, turn west (right) toward Newnan, right on Millard Farmer Ind Blvd (Hwy 34 Bypass), right on Hwy 29N, subject property is on the right.**

NOTE: Although every effort has been made to provide accurate information, some of the above was supplied by others and therefore we do not guarantee or accept responsibility for the above. Price and terms subject to prior sale and change without notice.

OWNER PHONE NO. **Jess Barron – 678-857-9350**
Frank Barron – 770-231-9535
Shown By Appointment Only

Revised 4/4/18

OWNER:

Camp & Cathryn Sullivan

LOCATION:

950 Highway 29N, Newnan, GA 30263

SALES PRICE: **\$899,900**

APPROX. NO. ACRES: **32+/- Acres**

LISTED BY: **Jess & Frank Barron**

DISTRICT: **5th** LAND LOT: **88**

ACCESS: **Frontage on Hwy 29N & Old Atlanta Hwy**

WATER: **Yes** SEWER: **Possible**

GAS: **Yes** ELEC: **Yes**

ZONING: **Res / Agr - Potential Commercial**

TAXES: **2017 - \$5,395.26**

SCHOOLS: **Northside / Evans / Newnan**

LEGAL IN **Yes** PLAT IN **Yes**
FILE: FILE: