

**RESEARCH COMMONS**  
12249 Science Drive | Orlando, FL 32826

**5% BROKER COMMISSION**

## OFFICE SPACE FOR LEASE |



### AVAILABILITIES RATE NEGOTIABLE

Suite 155	3,570 RSF
2nd Floor with Classified Lab	11,528 RSF <i>Subdividable</i>

- **NEWLY RENOVATED LOBBY**
- Adjacent to Naval Support Activity Center
- Located in Research Park near UCF
- High security GSA facility (with AT/FP fencing)
- Perfect for DoD contractors
- Flexible lease terms
- Classified lab space available



**For further information, contact:**

TIFFANY ZULLO  
407.659.0120 ext. 114  
tzullo@towerrealtypartners.com

A  
VENTURE  
OF

**CITY OFFICE** REIT

**TOWER**  
REALTY PARTNERS, INC.

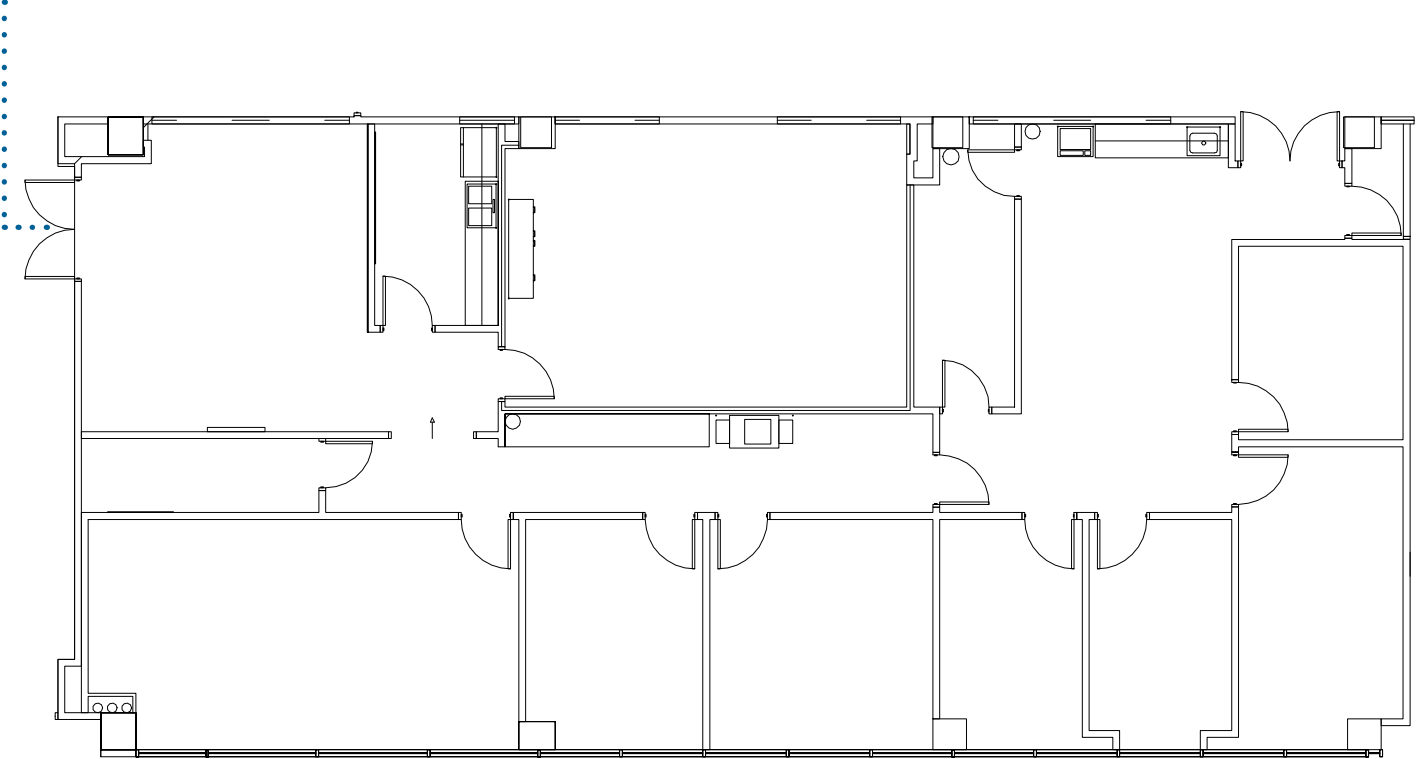
RESEARCH COMMONS  
12249 Science Drive | Orlando, FL 32826

5% BROKER COMMISSION

OFFICE SPACE FOR LEASE |

## SUITE 155 | 3,570 RSF

*Primary Entrance*



For further information, contact:

TIFFANY ZULLO  
407.659.0120 ext. 114  
tzullo@towerrealtypartners.com

A  
VENTURE  
OF

  
**CITY OFFICE** REIT

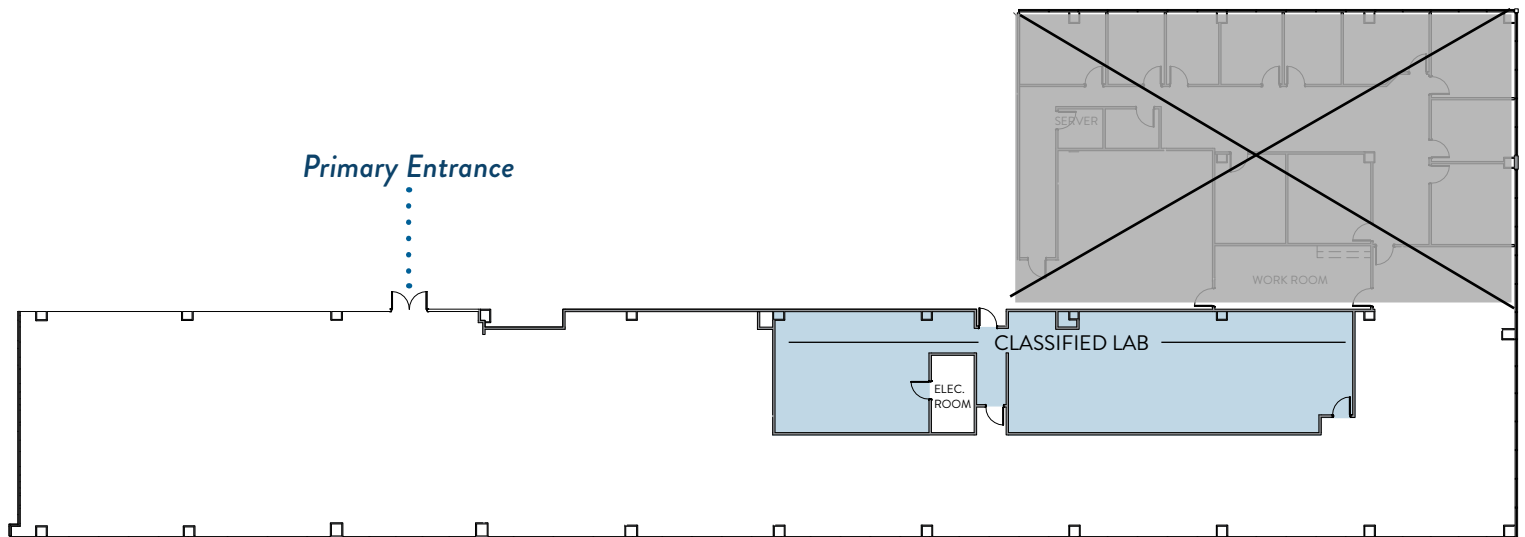
 **TOWER**  
REALTY PARTNERS, INC.

RESEARCH COMMONS  
12249 Science Drive | Orlando, FL 32826

5% BROKER COMMISSION

OFFICE SPACE FOR LEASE |

## SUITE 260 | 11,528 RSF



For further information, contact:

TIFFANY ZULLO  
407.659.0120 ext. 114  
tzullo@towerrealtypartners.com

A  
VENTURE  
OF

  
**CITY OFFICE** REIT

 **TOWER**  
REALTY PARTNERS, INC.