

STORES FOR LEASE

# The Shops of Schaumburg Court

100 BARRINGTON ROAD, SCHAUMBURG, IL 60194

RETAIL



## FEATURES

### SMALL SHOP SPACE AVAILABLE

- + 8,609 SF (unit C)
- + 5,263 SF (unit F)

### OUTLOT SPACE AVAILABLE

- + 2,500 SF (unit G1)

### MAJOR ANCHOR TRAFFIC

- + Join Home Depot, Petsmart, Chick-Fil-A and Planet Fitness

### REGIONAL SHOPPING AREA

- + Same intersection as Target, At Home, 24 Hour Fitness, Kohls, Michaels, Ross, Jewel/Osco & Ulta
- + Over 2 million SF of retail in corridor

### GREAT VISIBILITY & TRAFFIC

- + Unobstructed views of storefront
- + Pylon Signage Available
- + Traffic Count - 52,000 VPD at Intersection
- + Signalized access to Barrington Road

### HIGH INCOME AND DENSITY

- + \$92,562 Average Household Income
- + 127,057 People within 3 miles



## EXCLUSIVE AGENTS

**Joe Parrott, CRRP**  
Senior Vice President  
+1 312 297 7680  
joe.parrott@cbre.com

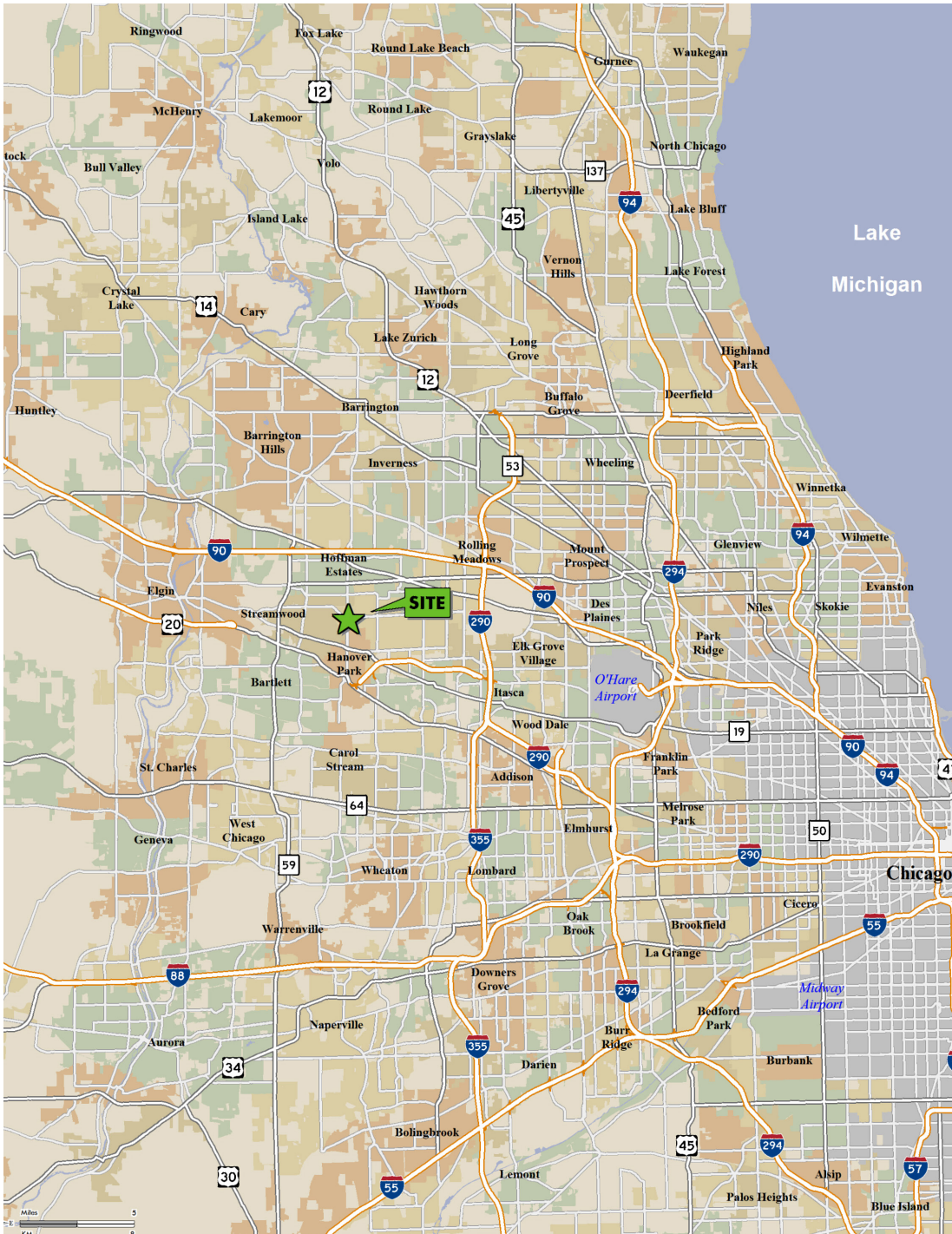
**Sean McCourt**  
Vice President  
+1 312 297 7688  
sean.mccourt@cbre.com

STORES FOR LEASE

# The Shops of Schaumburg Court

100 BARRINGTON ROAD, SCHAUMBURG, IL 60194

RETAIL



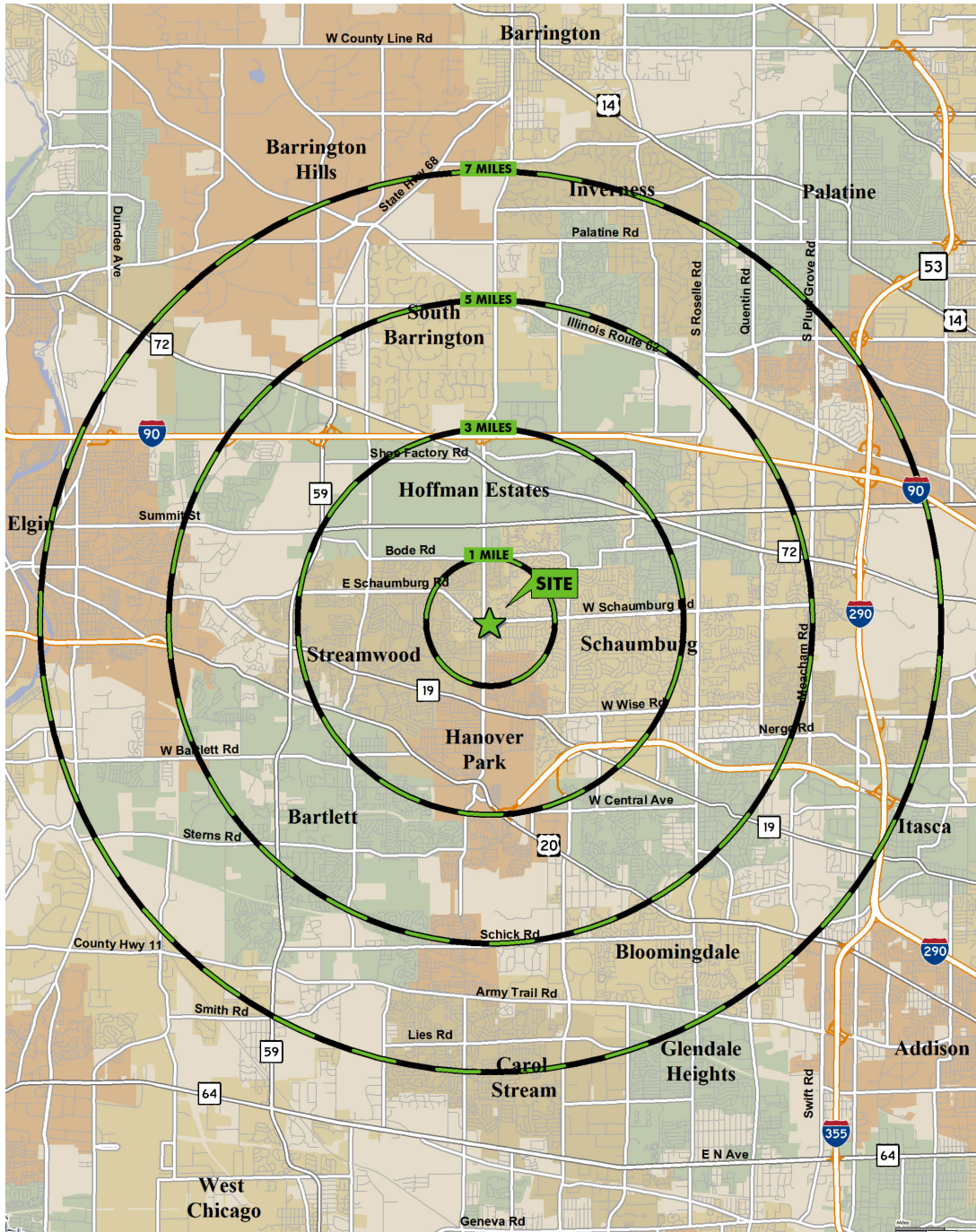


STORES FOR LEASE

# The Shops of Schaumburg Court

100 BARRINGTON ROAD, SCHAUMBURG, IL 60194

RETAIL



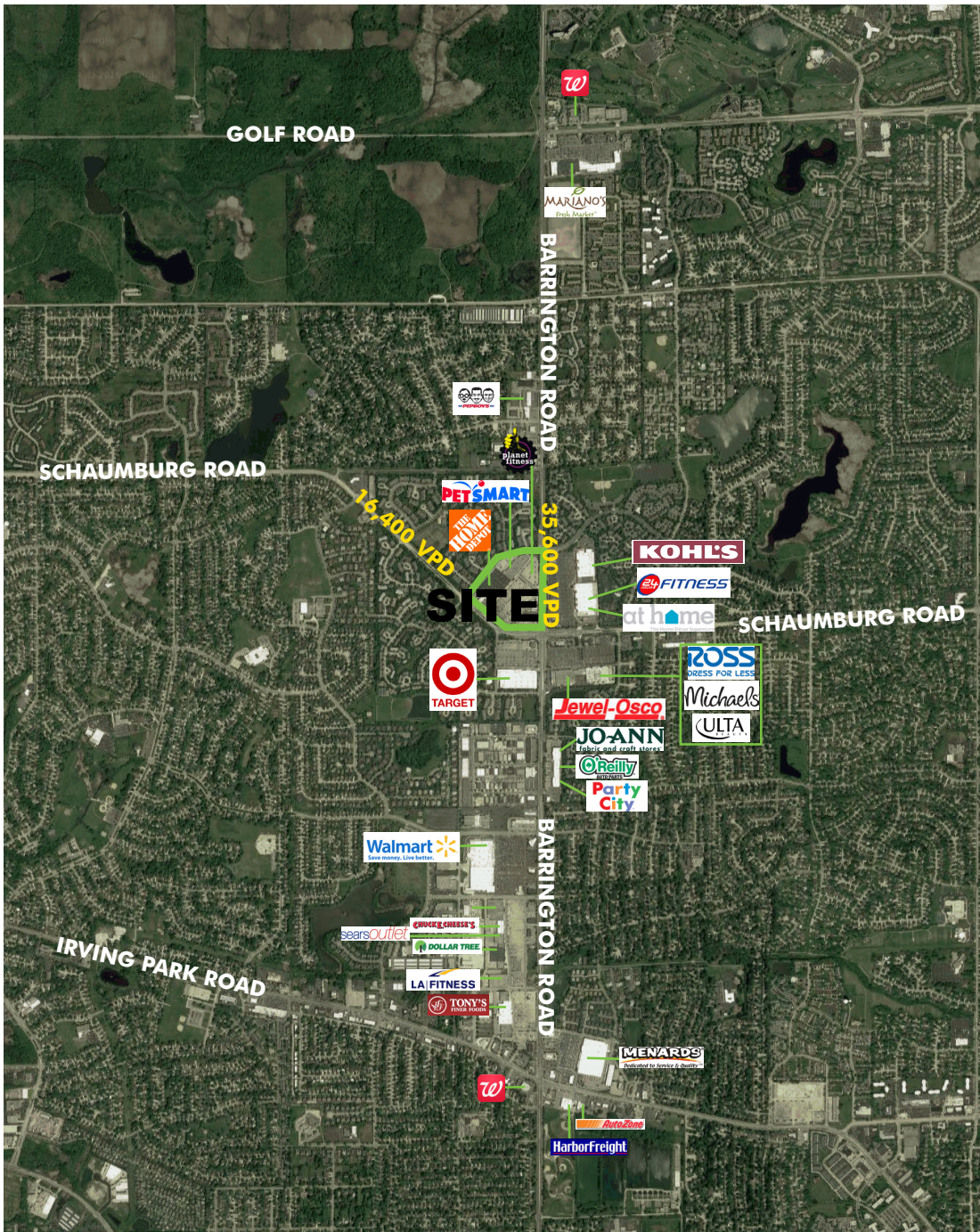


STORES FOR LEASE

# The Shops of Schaumburg Court

100 BARRINGTON ROAD, SCHAUMBURG, IL 60194

RETAIL





STORES FOR LEASE

# The Shops of Schaumburg Court

100 BARRINGTON ROAD, SCHAUMBURG, IL 60194

RETAIL



UNIT	TENANT	SQ. FT.
A	The Home Depot	163,184
B	Petsmart	25,737
C	Available	8,609
D	Planet Fitness	20,800
E	Pure Hockey	9,500
F	Available	5,263

UNIT	TENANT	SQ. FT.
G1	Available	2,500
G2	Huntington Learning Center	2,240
G3	AT&T	2,720
H1	Noodles & Co.	2,500
H2	Red Wing Shoes	2,170
H3	Qdoba	2,170
J	Chick-Fil-A	3,540

[www.cbre.com/schaumburgcourt](http://www.cbre.com/schaumburgcourt)

CBRE



# CBRE

## DEMOGRAPHIC BRIEF

## SHOPS OF SCHAUMBURG COURT

100 BARRINGTON RD



### POPULATION

	1 MILE	3 MILES	5 MILES	7 MILES
2018 Population - Current Year Estimate	18,467	127,057	243,934	412,182
2023 Population - Five Year Projection	18,375	127,156	244,245	413,214
2010 Population - Census	18,458	125,680	241,889	408,273
2000 Population - Census	19,013	127,259	236,070	395,932
2010-2018 Annual Population Growth Rate	0.01%	0.13%	0.10%	0.12%
2018-2023 Annual Population Growth Rate	-0.10%	0.02%	0.03%	0.05%



### HOUSEHOLDS

2018 Households - Current Year Estimate	6,946	44,421	87,394	146,009
2023 Households - Five Year Projection	6,911	44,441	87,466	146,272
2010 Households - Census	6,937	43,879	86,555	144,565
2000 Households - Census	7,153	44,507	83,759	139,258
2010-2018 Annual Household Growth Rate	0.02%	0.15%	0.12%	0.12%
2018-2023 Annual Household Growth Rate	-0.10%	0.01%	0.02%	0.04%
2018 Average Household Size	2.65	2.84	2.77	2.81



### HOUSEHOLD INCOME

2018 Average Household Income	\$92,562	\$88,911	\$100,297	\$104,597
2023 Average Household Income	\$101,199	\$98,084	\$110,117	\$114,873
2018 Median Household Income	\$80,086	\$74,579	\$81,407	\$82,323
2023 Median Household Income	\$84,041	\$78,587	\$86,111	\$87,358
2018 Per Capita Income	\$34,937	\$31,257	\$36,072	\$37,304
2023 Per Capita Income	\$38,179	\$34,444	\$39,567	\$40,919



### HOUSING UNITS

<b>2018 Housing Units</b>	<b>7,229</b>	<b>46,636</b>	<b>91,515</b>	<b>153,476</b>
2018 Vacant Housing Units	283 3.9%	2,215 4.7%	4,121 4.5%	7,467 4.9%
2018 Occupied Housing Units	6,946 96.1%	44,420 95.2%	87,395 95.5%	146,009 95.1%
2018 Owner Occupied Housing Units	6,028 83.4%	33,618 72.1%	67,466 73.7%	111,099 72.4%
2018 Renter Occupied Housing Units	918 12.7%	10,802 23.2%	19,929 21.8%	34,910 22.7%



### EDUCATION

<b>2018 Population 25 and Over</b>	<b>13,158</b>	<b>86,605</b>	<b>169,087</b>	<b>284,458</b>
HS and Associates Degrees	7,050 53.6%	46,309 53.5%	86,220 51.0%	140,364 49.3%
Bachelor's Degree or Higher	4,813 36.6%	29,796 34.4%	67,426 39.9%	116,160 40.8%



### PLACE OF WORK

2018 Businesses	444	2,844	7,051	13,620
2018 Employees	4,941	35,775	105,353	215,131