



**THOR RETAIL ADVISORS**  
AS EXCLUSIVE AGENT *presents*

# 53 | MERCER STREET

UPPER LEVELS



JAMES & COMPANY

53

ZIMMERMANN

55

477 BROADWAY  
NOVA

# 53 | MERCER STREET

## SIZE:

•3rd Floor: **2,700 SF**

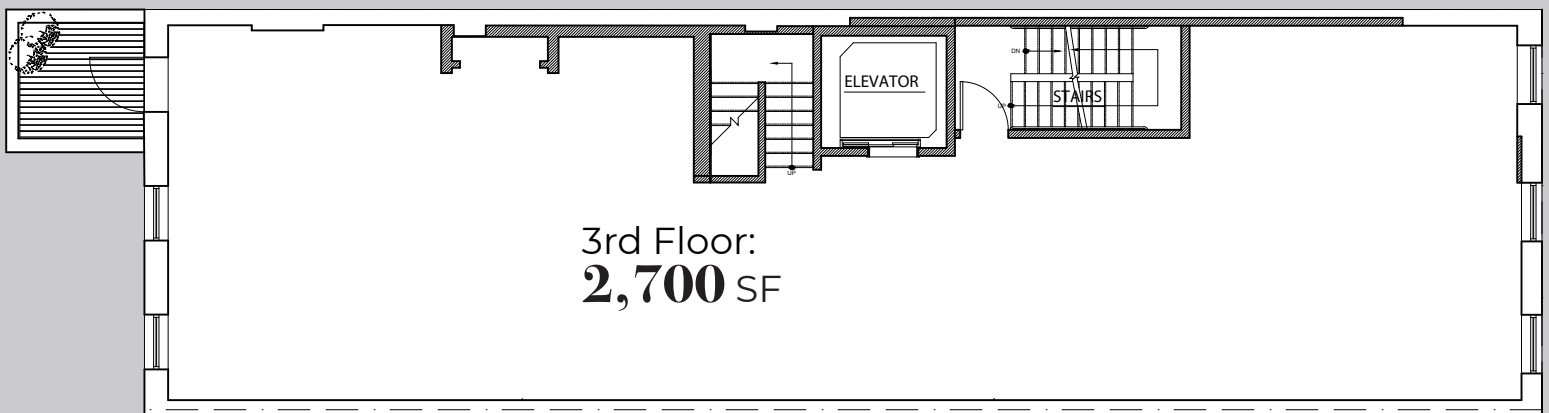
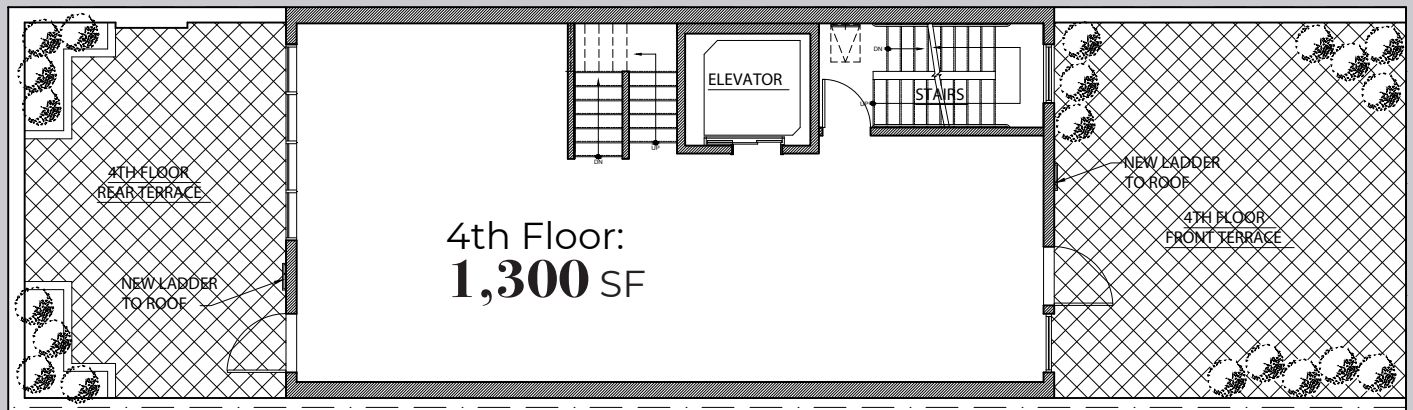
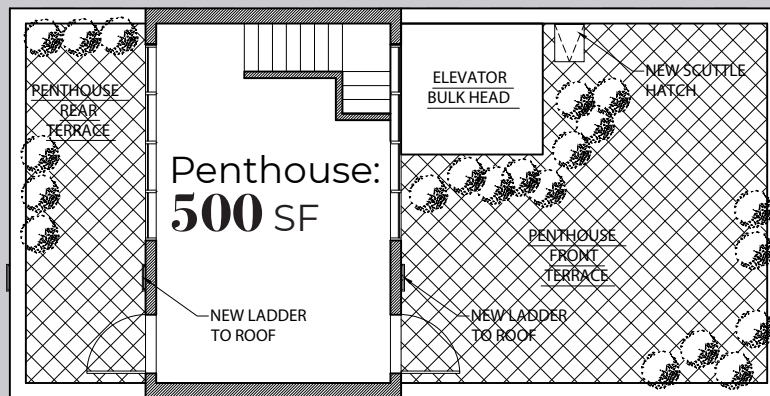
•4th Floor: **1,300 SF**

•Penthouse: **500 SF**

POSSESSION: Q4 2019

## COMMENTS:

- Unique and creative office space in Soho
- Floors 4 & Penthouse have front and rear terraces
- Elevator access to all floors with dedicated entrance on the ground
- All floors must be leased together





**THOR RETAIL ADVISORS**  
AS EXCLUSIVE AGENT *presents*

# 53 | MERCER STREET

UPPER LEVELS

DAN HARROCH

212.529.7893

[Dharroch@ThorRetailAdvisors.com](mailto:Dharroch@ThorRetailAdvisors.com)

PAYAL DOSHI

646.203.0219

[Pdoshi@ThorRetailAdvisors.com](mailto:Pdoshi@ThorRetailAdvisors.com)

