

Bernal Plaza

Bernal Avenue at Valley Avenue

Pleasanton, CA

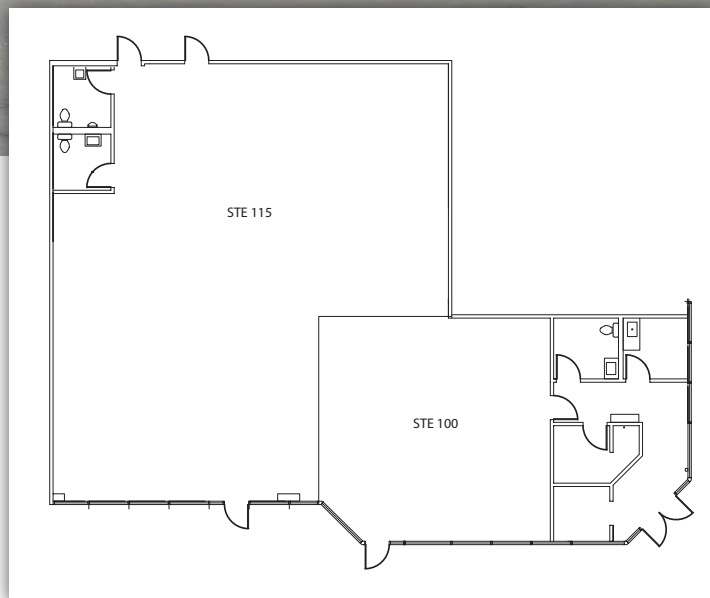


AVAILABLE SPACE

- ◆ Suite 100 (±1,256 SF) - AVAILABLE NOW
- ◆ Suite 115 (±2,399 SF) - AVAILABLE 1/19 or possibly sooner

SPACE HIGHLIGHTS

- ◆ Suite 100 - Corner space with possibility for 2 signs
- ◆ Suites 100 and 115 can be combined (±3,655)



PROJECT HIGHLIGHTS

- ◆ 35,722 SF across from top-performing Pleasanton Gateway (Safeway/CVS)
- ◆ Located along Bernal Avenue, a major east-west corridor to downtown Pleasanton and Alameda County Fairgrounds.
- ◆ Nestled in Bernal Corporate Park (1.2 million SF Office/R&D) adjacent to Alameda County Fairgrounds

DEMOGRAPHICS

	1-mile	3-miles	5-miles
Population	10,118	59,870	113,613
Daytime Population	7,440	64,148	107,851
Avg. Household Income	\$150,528	\$138,542	\$134,261

Keith Marr 925.974.0112 kmarr@ngkf.com CA RE License #00857732
Meghan Basso 925.974.0117 mbasso@ngkf.com CA RE License #0188001

1333 North California Blvd., Suite 343, Walnut Creek, CA 94596

www.ngkf.com



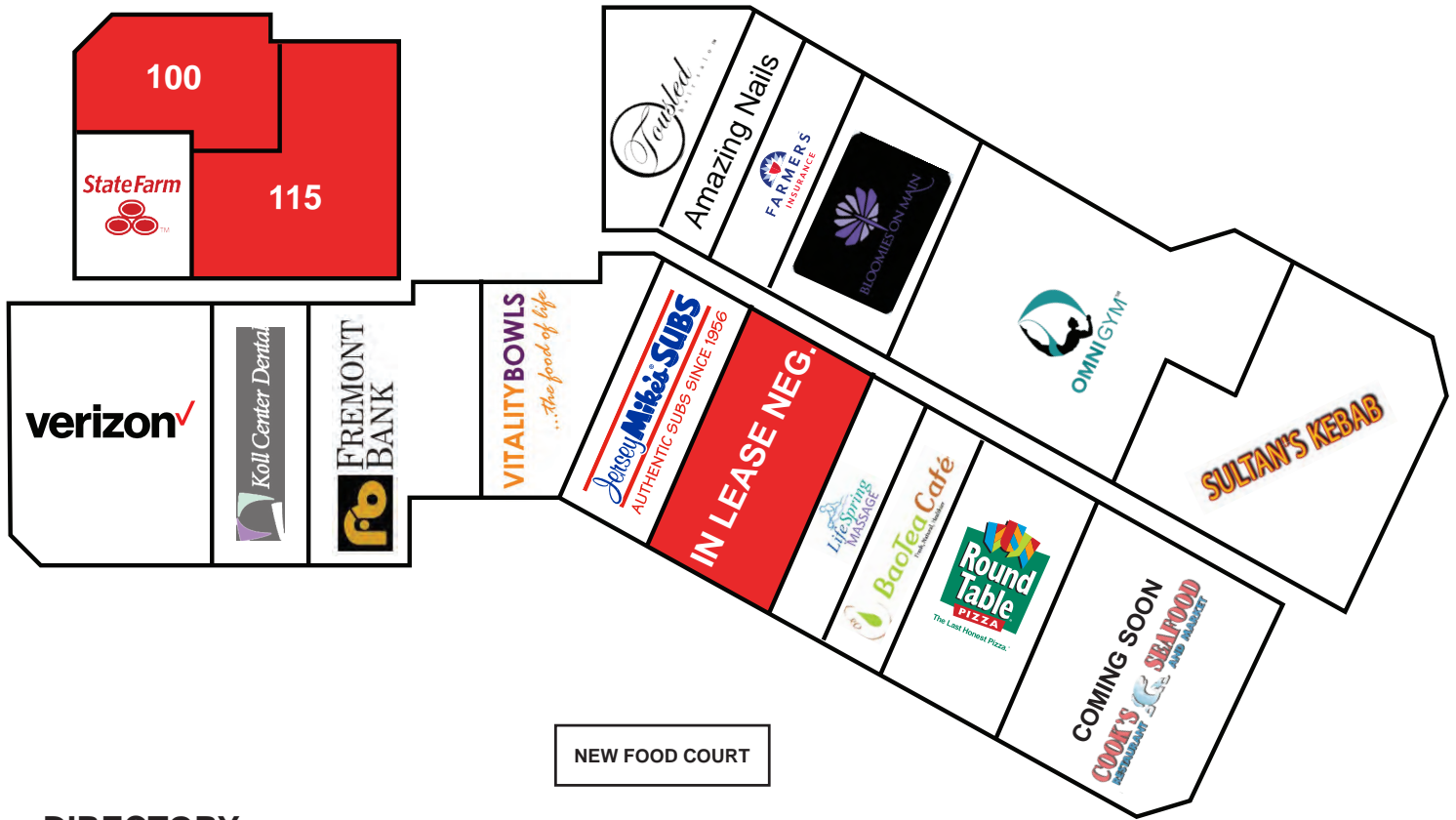
The distributor of this communication is performing acts for which a real estate license is required. The information contained herein has been obtained from sources deemed reliable but has not been verified and no guarantee, warranty or representation, either express or implied, is made with respect to such information. Terms of sale or lease and availability are subject to change or withdrawal without notice.

14-1580 • 07/18

Bernal Plaza

Bernal Avenue at Valley Avenue

Pleasanton, CA



DIRECTORY

100	AVAILABLE	±1,256 SF
115	AVAILABLE (1/19)	±2,399 SF
130	Tousled Hair	±1,280 SF
135	Amazing Nails	±797 SF
137	Farmer's Insurance	±821 SF
150	Bloomies on Main	±1,916 SF
190	Omni Gym	±4,568 SF
205	Sultan's Kebab	±3,233 SF
300	Cook's Seafood Restaurant and Market	±2,981 SF
310	Round Table	±2,109 SF
318	BaoTea Cafe	±904 SF

324	Life Spring Massage	±904 SF
330	IN LEASE NEGOT.	±2,109 SF
333	Jersey Mike's	±1,442 SF
335	Vitality Bowl	±1,535 SF
345	Fremont Bank	±2,082 SF
350	Koll Center Dental Group	±1,494 SF
355	Verizon	±2,955 SF
420	State Farm	±953 SF



Keith Marr 925.974.0112 kmarr@ngkf.com CA RE License #00857732
Meghan Basso 925.974.0117 mbasso@ngkf.com CA RE License #0188001

1333 North California Blvd., Suite 343, Walnut Creek, CA 94596

www.ngkf.com

The distributor of this communication is performing acts for which a real estate license is required. The information contained herein has been obtained from sources deemed reliable but has not been verified and no guarantee, warranty or representation, either express or implied, is made with respect to such information. Terms of sale or lease and availability are subject to change or withdrawal without notice.

14-1580 • 07/18

Bernal Plaza

Bernal Avenue at Valley Avenue

Pleasanton, CA



Keith Marr 925.974.0112 kmarr@ngkf.com CA RE License #00857732

Meghan Basso 925.974.0117 mbasso@ngkf.com CA RE License #0188001

1333 North California Blvd., Suite 343, Walnut Creek, CA 94596

www.ngkf.com

The distributor of this communication is performing acts for which a real estate license is required. The information contained herein has been obtained from sources deemed reliable but has not been verified and no guarantee, warranty or representation, either express or implied, is made with respect to such information. Terms of sale or lease and availability are subject to change or withdrawal without notice.

14-1580 • 07/18

Bernal Plaza

Bernal Avenue at Valley Avenue

Pleasanton, CA



Keith Marr 925.974.0112 kmarr@ngkf.com CA RE License #00857732
Meghan Basso 925.974.0117 mbasso@ngkf.com CA RE License #0188001
 1333 North California Blvd., Suite 343, Walnut Creek, CA 94596 www.ngkf.com

The distributor of this communication is performing acts for which a real estate license is required. The information contained herein has been obtained from sources deemed reliable but has not been verified and no guarantee, warranty or representation, either express or implied, is made with respect to such information. Terms of sale or lease and availability are subject to change or withdrawal without notice.

14-1580 • 07/18