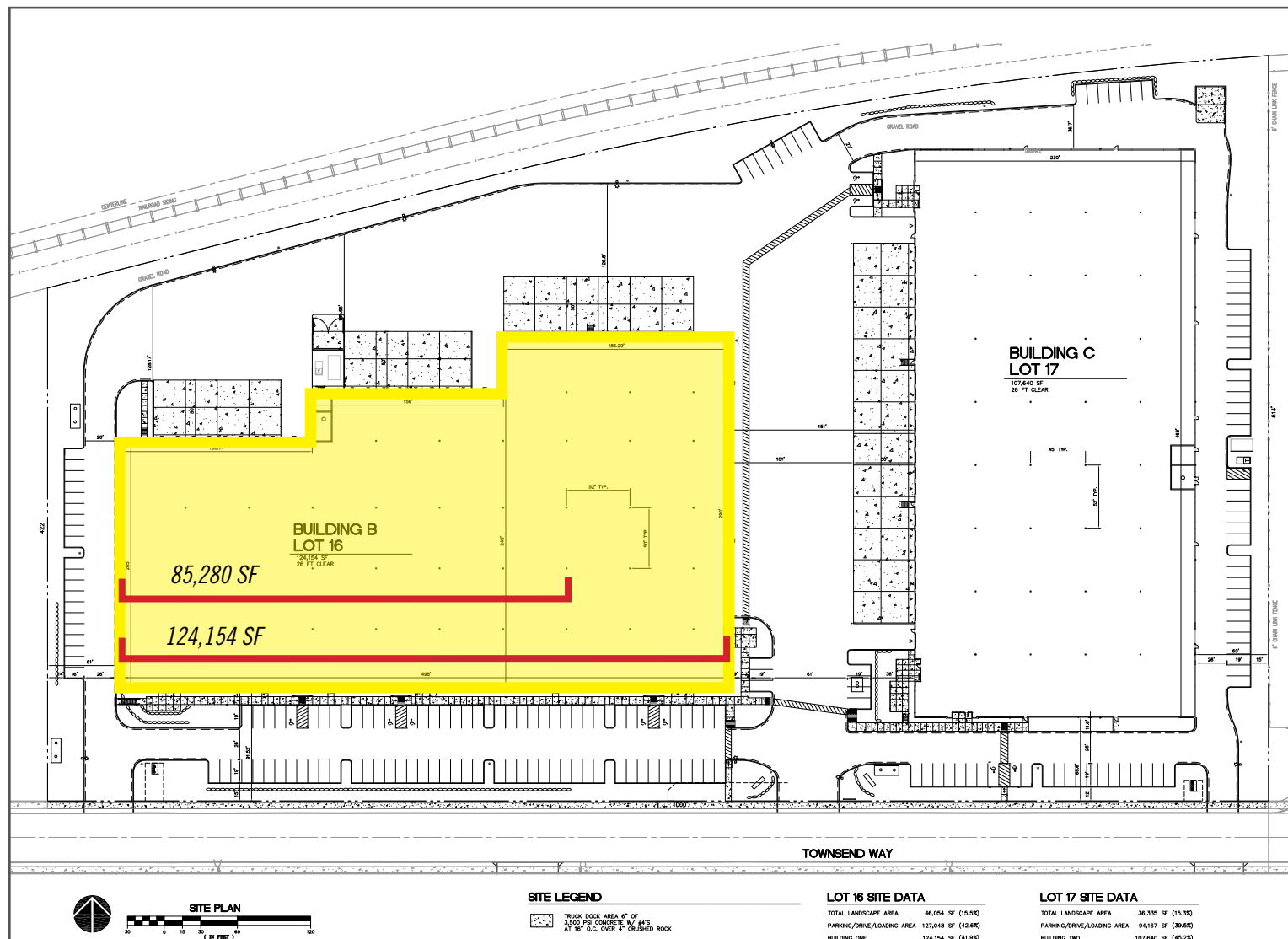


INDUSTRIAL SPACE

FOR SUBLEASE



22657 NE Townsend Way | Fairview, OR



CONTACT US

CAPACITY COMMERCIAL GROUP 805 SW Broadway, Suite 700 Portland, OR | 97205

PHONE. 503.326.9000 | WEB. www.capacitycommercial.com

DON OSSEY, SIOR

principal

P. 503.542.4344

E. don@capacitycommercial.com

TOM KNECHT

associate broker

P. 503.542.2907

E. tom@capacitycommercial.com

Proud member of:

CORFAC
International

The information contained herein is believed to be accurate but is not warranted as to its accuracy and may change or be updated without notice. Seller or Landlord makes no representation as to the environmental condition of the property and recommends purchaser's or tenant's independent investigation.

INDUSTRIAL SPACE

FOR SUBLEASE



Birtcher Center at Townsend Farms (Building B) | Fairview, OR

SITE SPECS

&

INFORMATION

» Approximately 85,280-124,154 SF (Full Building)

» Up to 17,426 SF of Office / Lab Space

» Sublessor: CTDI

» Sublease Term Expires March 31, 2023

» Lease Rates:

» Shell: \$0.45 / SF / Month

» Office: \$0.90 / SF / Month

» Estimated NNN Expenses: \$0.18 / SF / Month

CONTACT US

CAPACITY COMMERCIAL GROUP 805 SW Broadway, Suite 700 Portland, OR | 97205

PHONE. 503.326.9000 | WEB. www.capacitycommercial.com

DON OSSEY, SIOR

principal

P. 503.542.4344

E. don@capacitycommercial.com

TOM KNECHT

associate broker

P. 503.542.2907

E. tom@capacitycommercial.com

Proud member of:

CORFAC
International

The information contained herein is believed to be accurate but is not warranted as to its accuracy and may change or be updated without notice. Seller or Landlord makes no representation as to the environmental condition of the property and recommends purchaser's or tenant's independent investigation.

BIRTCHEr CENTER AT TOWNSEND FARMS



BUILDING INFORMATION

- » Clear Height: 26'
- » 25 Dock Doors
- » 8 with Dock Packages
- » 3 Grade Doors
- » Electrical: 1,600 Amps

- » Auto Parking: 100+ Auto Spaces Available
- » Sprinklers: ESFR System
- » Column Spacing: 52' Wide by 45' Deep
- » Lighting: T5 with Motion Sensors
- » Existing Racking May Be Available

