

INDUSTRIAL BUILDING FOR LEASE

5,000± SF ON 0.60± AC

405 N. LINCOLN STREET, STOCKTON, CA

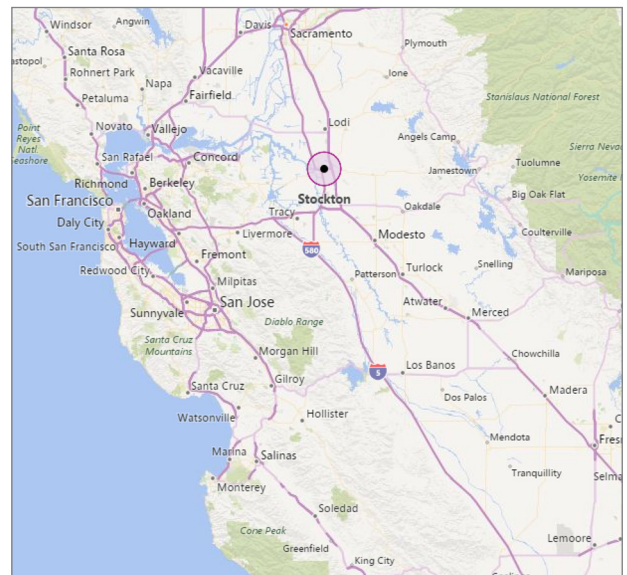


AVAILABLE SF: 5,000± SF
LAND SIZE: 0.60± AC
POWER: 200 A, 120/ 208 V, Single Phase

COMMENTS:

- 16' ± clear height
- Three (3) (12' x 14') Grade Level Doors
- Fenced and compacted yard for parking/ storage
- Concrete block construction
- Zoned I-G (General Industrial, City of Stockton)
- Approx. 500± SF office
- Close proximity to I-5 and Crosstown Fwy (Hwy 4)

LEASE RATE: \$4,500/Month, Gross



Jim Martin, SIOR
BRE #01214270
jmartin@lee-associates.com
D 209.983.4088
C 925.352.6948

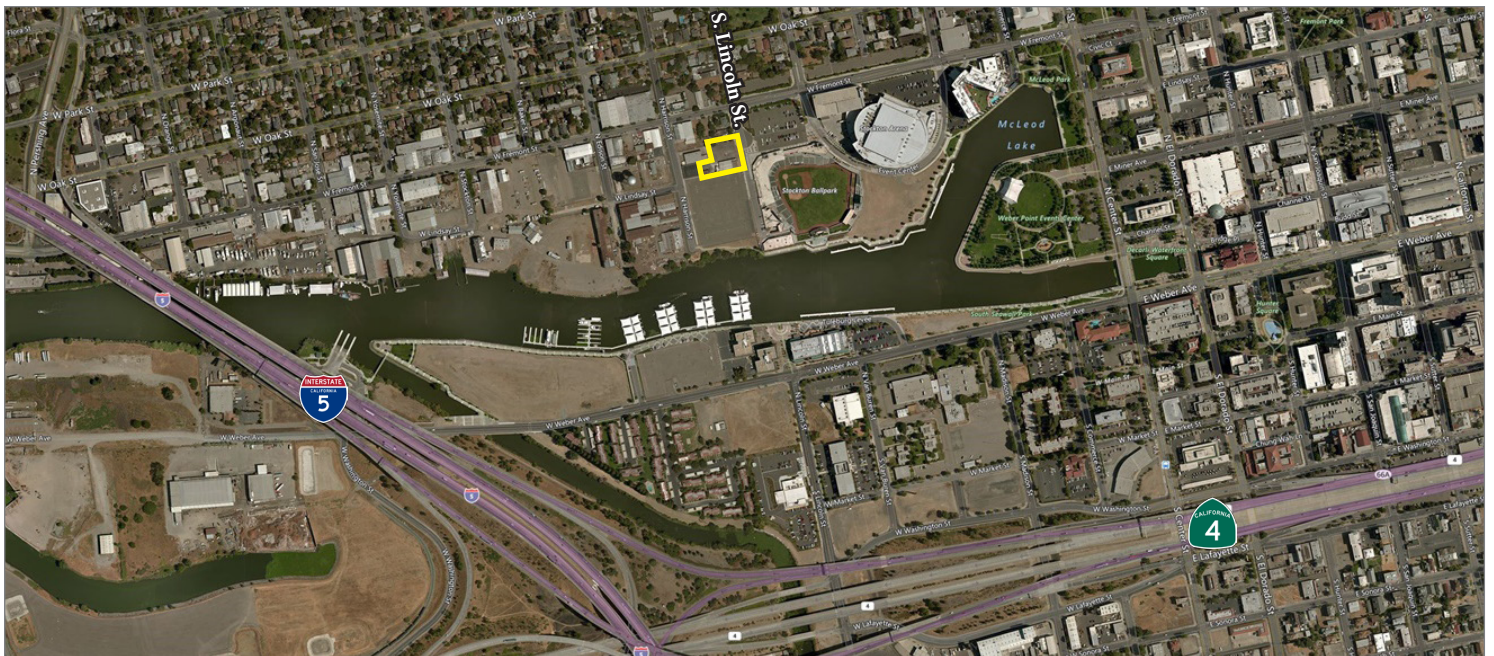
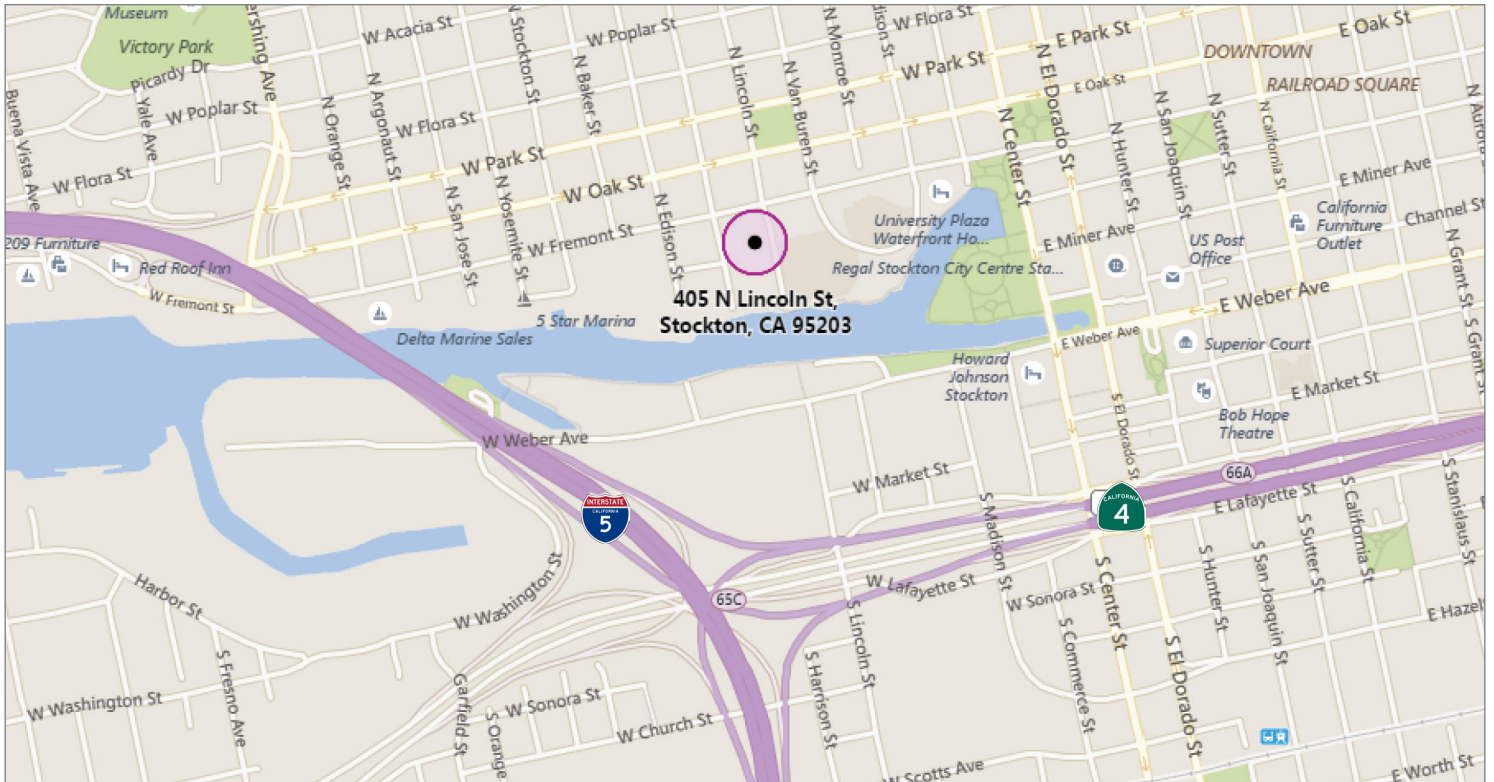
Guy Grace
BRE #02045756
ggrace@lee-associates.com
D 209.982.4444
C 925.360.8610

All information furnished regarding property for sale, rental or financing is from sources deemed reliable, but no warranty or representation is made to the accuracy thereof and same is submitted to errors, omissions, change of price, rental or other conditions prior to sale, lease or financing or withdrawal without notice. No liability of any kind is to be imposed on the broker herein.

INDUSTRIAL BUILDING FOR LEASE

5,000± SF ON 0.60± AC

405 N. LINCOLN STREET, STOCKTON, CA



Jim Martin, SIOR
BRE #01214270
jmartin@lee-associates.com
D 209.983.4088
C 925.352.6948

Guy Grace
BRE #02045756
ggrace@lee-associates.com
D 209.982.4444
C 925.360.8610

All information furnished regarding property for sale, rental or financing is from sources deemed reliable, but no warranty or representation is made to the accuracy thereof and same is submitted to errors, omissions, change of price, rental or other conditions prior to sale, lease or financing or withdrawal without notice. No liability of any kind is to be imposed on the broker herein.