

GREAT BRIDGE

CORNER PARCEL FOR SALE

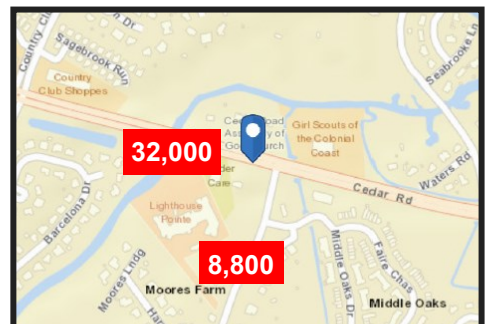
921 Cedar Road & 321 Waters Road
Chesapeake, VA 23322



SALES PRICE: \$914,500

- 1.855 Acre Combined Corner Parcel With Two Owners
- At the corner of Cedar Road & Waters Road - Signalized Intersection
- Strong Potential Commercial - Current Zoning: R15S
- Parcels A & B: 1.649 Acres - \$824,500
- Parcel C: 0.206 Acres - \$90,000
- Approximately 242 ft. road frontage - Cedar Road
- Approximately 336 ft. road frontage - Waters Road

TRAFFIC COUNT:



The information presented in this marketing flyer is obtained from sources believed to be reliable, but is not warranted. This offer is subject to prior sale or lease, errors, omissions or withdrawal without notice.

EXCLUSIVELY OFFERED BY :

CONTACT:

DAVID P. HUNTER

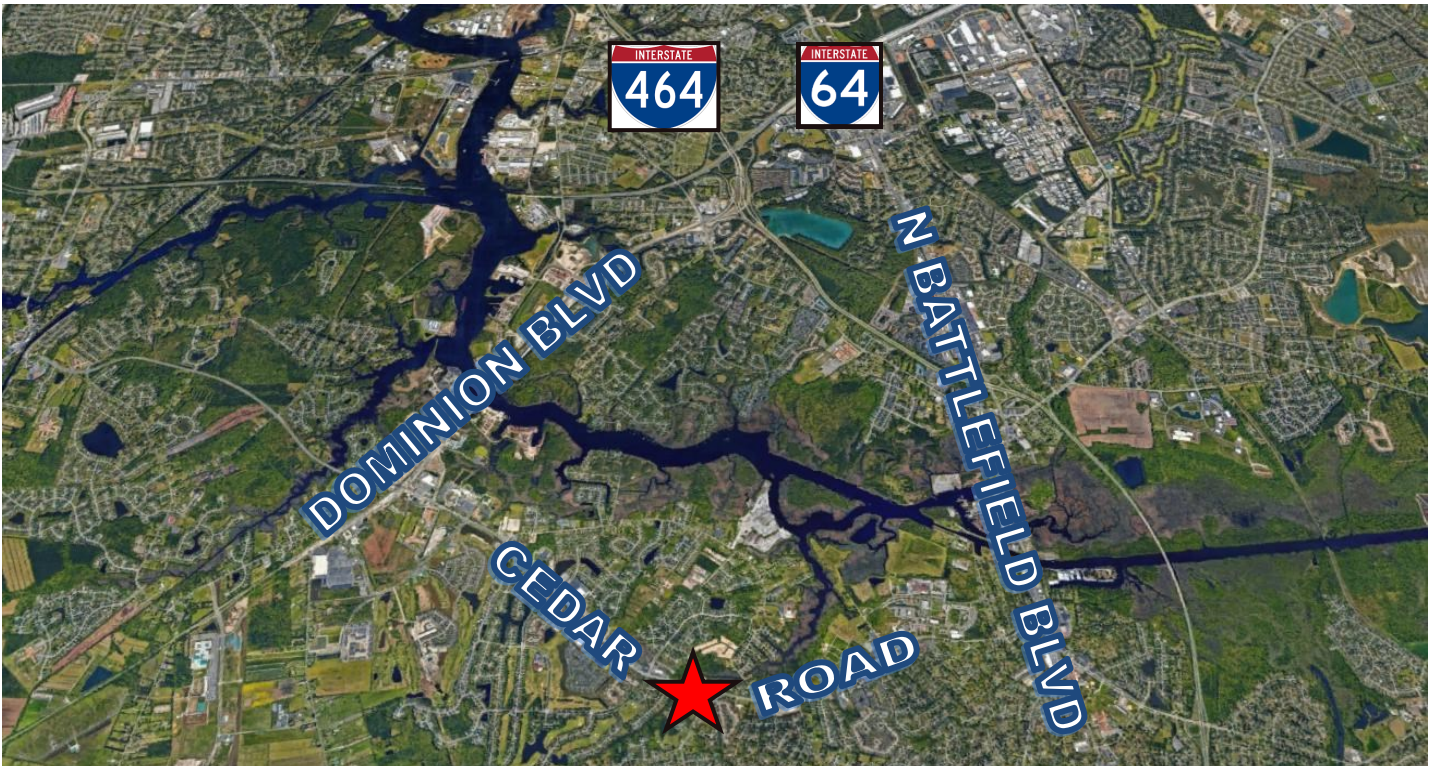
dhunter@riddleassociates.com

(757) 523-1900

RIDDLE ASSOCIATES, INC.

Commercial Real Estate

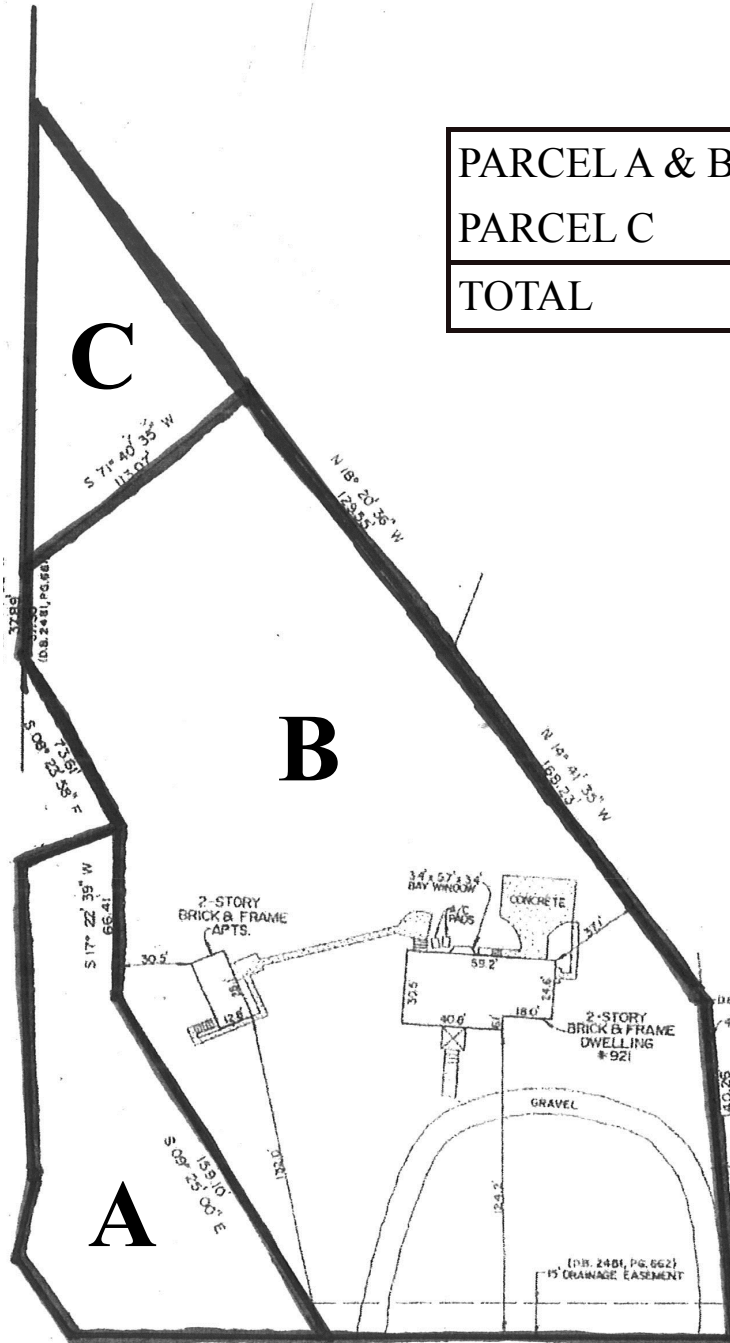
“Real Estate Services Tailored to Your Needs”



921 Cedar Road & 321 Waters Road, Chesapeake, VA 23322

The information presented in this marketing flyer is obtained from sources believed to be reliable, but is not warranted. This offer is subject to prior sale or lease, errors, omissions or withdrawal without notice.

WATERS ROAD



PARCELA & B	1.649 ACRES
PARCEL C	0.206 ACRES
TOTAL	1.855 ACRES

CEDAR ROAD

Parcel Lots A, B & C

The information presented in this marketing flyer is obtained from sources believed to be reliable, but is not warranted. This offer is subject to prior sale or lease, errors, omissions or withdrawal without notice.