

2153 Wrightsville Ave & 2 Dexter Lots

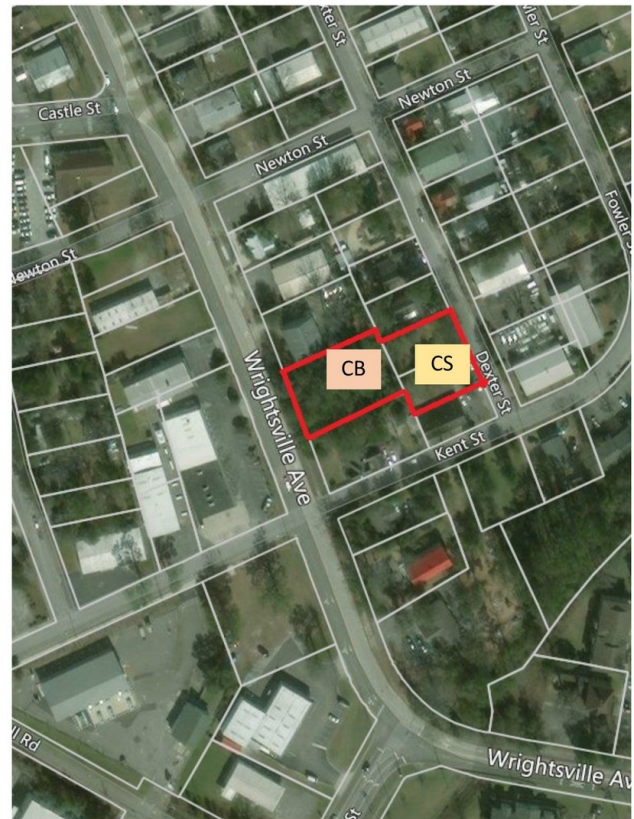
2153 Wrightsville Ave, Wilmington, NC 28403



Listing ID: 30258038
Status: Active
Property Type: Vacant Land For Sale
(also listed as Business Opportunity)
Possible Uses: Retail
Gross Land Area: 0.75 Acres
Sale Price: \$225,000
Unit Price: \$300,000 Per Acre
Sale Terms: Cash to Seller

Overview/Comments

This property on 2153 Wrightsville Avenue, combined with two lots on Dexter is nearly a three quarters of an acre, in a great location, and very close to downtown Wilmington. There are tons of rooftops nearby and the property is zoned as a Community Business. There are also two adjacent lots on 2158 Dexter Street and 2162 Dexter Street that are zoned as CS – Community Service (which allows flex space development), and they are included in the listing price as well.



General Information

Taxing Authority:	New Hanover County	Zoning:	CB
Tax ID/APN:	r05411-005-001-000	Sale Terms:	Cash to Seller
Possible Uses:	Retail		

Area & Location

Property Located Between:	Wrightsville Avenue and Dexter Street	Feet of Frontage:	109
Property Visibility:	Excellent	Traffic/Vehicle Count:	7,300
Legal Description:	SPOFFORD BLK 7 LOT 79	Highway Access:	HWY 117, US 74
Largest Nearby Street:	Wrightsville Avenue	Airports:	Wilmington International Airport

Land Related

Lot Frontage:	109
Lot Depth:	156

Location

Address:	2153 Wrightsville Ave, Wilmington, NC 28403
County:	New Hanover
MSA:	Wilmington



Eastern Carolinas
Commercial
REAL ESTATE

LANDMARK DRIVE, UNIT 4 WILMINGTON, NC 28412

WWW.ECCRENC.COM

O: 910.399.4602

F: 910.399.4675

All information contained herein has been obtained from sources deemed reliable. However, no warranty or guarantee is made as to the accuracy of the information.



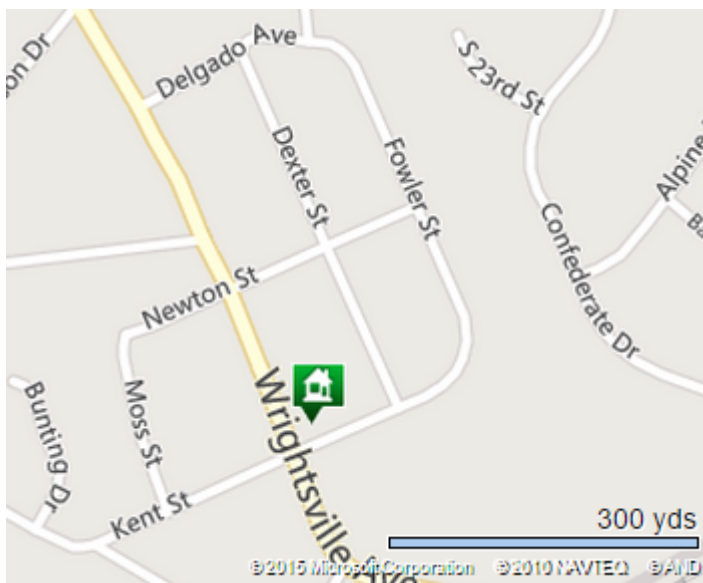
Property Images



Google Maps Image



Street View Google Image



Lot Pic



John Hinnant, III

Eastern Carolinas Commercial Real Estate

910-619-3430 [M]

910-399-4602 [0]

john@eccrenc.com



Eastern Carolinas Commercial REAL ESTATE

432 LANDMARK DRIVE, UNIT 4 WILMINGTON, NC 28412

WWW.ECCRENC.COM

0: 910.399.4602

F: 910.399.4675

All information contained herein has been obtained from sources deemed reliable. However, no warranty or guarantee is made as to the accuracy of the information.