



CENTRUM
WICKER PARK

1640-1664 WEST DIVISION STREET

FOR MORE INFORMATION, PLEASE CONTACT:

MEREDITH OLIVER

T: 312.470.1829 E: MEREDITH.OLIVER@CUSHWAKE.COM

BRENDAN REEDY

T: 312.470.2306 E: BRENDAN.REEDY@CUSHWAKE.COM

NICKI BERG

T: 312.470.1834 E: NICKI.BERG@CUSHWAKE.COM



MARKET SUMMARY

PROJECT SUMMARY

Join the most exciting new development on Wicker Park's Division Street Corridor - home to one of Chicago's best dining, nightlife and boutique shopping scenes. Centrum Wicker Park offers customizable footprints with high ceilings and modern design perfectly suited for both retail and restaurant tenants. Located adjacent to the CTA Division Street station and the 6 corner intersection of Division/Milwaukee/Ashland. Centrum Wicker Park will immediately become the new gateway to Wicker Park.

SITE DETAILS

- 11,599 total SF (divisible) of ground floor retail space available now in Phase I
- 5,513 SF of ground floor retail and 11,332 SF of second floor retail available in Phase II (under construction)
- 26' wide sidewalks offering incredible outdoor seating option
- Huge ceiling heights - 17'
- Phase I space available now
- Phase II space delivering Q4 2017
- 260 luxury apartments, condominiums and townhouses at completion
- Adjacent to CTA Division St Station - 2.1 M annual riders

DEMOGRAPHICS

	.5 MILE	1 MILE	1.5 MILE
Population	21,328	56,913	111,624
Average HH Income	\$95,753	\$94,878	\$94,761



CENTRUM
WICKER PARK

FOR MORE INFORMATION, PLEASE CONTACT:

MEREDITH OLIVER

T: 312.470.1829 E: MEREDITH.OLIVER@CUSHWAKE.COM

BRENDAN REEDY

T: 312.470.2306 E: BRENDAN.REEDY@CUSHWAKE.COM

NICKI BERG

T: 312.470.1834 E: NICKI.BERG@CUSHWAKE.COM



SITE PLAN

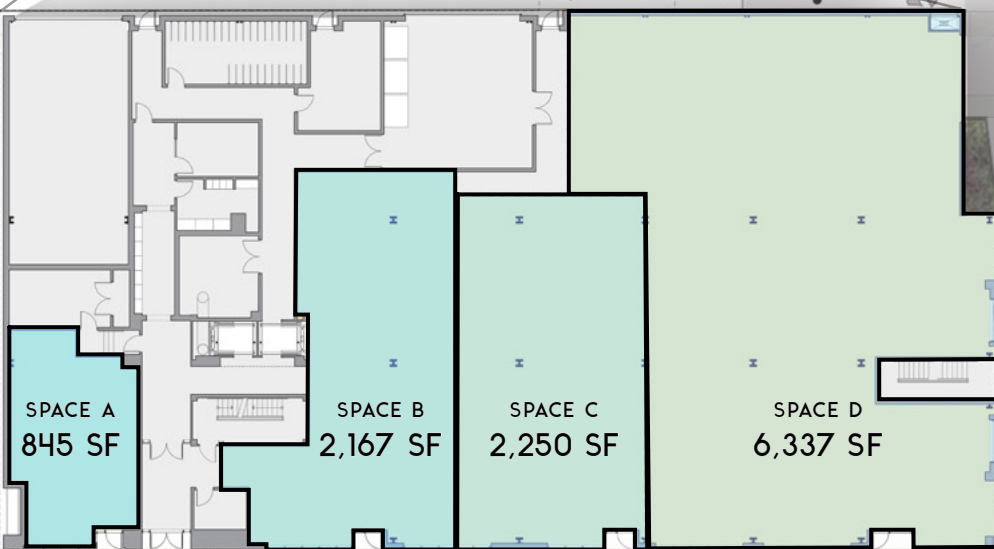
PAULINA STREET

BANGERS & LACE

PHASE 1

11,599 SF

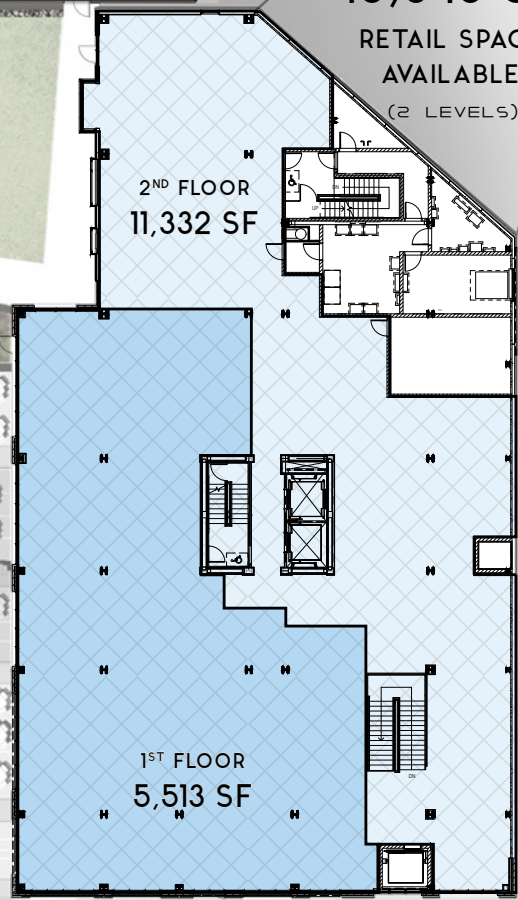
RETAIL SPACE AVAILABLE



PHASE 2

16,845 SF

RETAIL SPACE AVAILABLE
(2 LEVELS)



OUTDOOR SEATING

OUTDOOR SEATING

DIVISION STREET

FOR MORE INFORMATION, PLEASE CONTACT:

MEREDITH OLIVER

T: 312.470.1829 E: MEREDITH.OLIVER@CUSHWAKE.COM

BRENDAN REEDY

T: 312.470.2306 E: BRENDAN.REEDY@CUSHWAKE.COM

NICKI BERG

T: 312.470.1834 E: NICKI.BERG@CUSHWAKE.COM

SITE PLAN



- HOLIDAY JONES
- NINA
- RIGHT LIQUORS
- WICKER PARK ATHLETIC CLUB
- WENDY'S
- INTELLIGENTSIA
- VILLA

FOR MORE INFORMATION, PLEASE CONTACT:

MEREDITH OLIVER **BRENDAN REEDY** **NICKI BERG**

T: 312.470.1829 E: MEREDITH.OLIVER@CUSHWAKE.COM T: 312.470.2306 E: BRENDAN.REEDY@CUSHWAKE.COM T: 312.470.1834 E: NICKI.BERG@CUSHWAKE.COM



SITE MAP

CENTRUM WICKER PARK



FOR MORE INFORMATION, PLEASE CONTACT:

MEREDITH OLIVER

T: 312.470.1829 E: MEREDITH.OLIVER@CUSHWAKE.COM

BRENDAN REEDY

T: 312.470.2306 E: BRENDAN.REEDY@CUSHWAKE.COM

NICKI BERG

T: 312.470.1834 E: NICKI.BERG@CUSHWAKE.COM





CENTRUM WICKER PARK

CONTACT:

MEREDITH OLIVER

T: 312.470.1829

E: MEREDITH.OLIVER@CUSHWAKE.COM

BRENDAN REEDY

T: 312.470.2306

E: BRENDAN.REEDY@CUSHWAKE.COM

NICKI BERG

T: 312.470.1834

E: NICKI.BERG@CUSHWAKE.COM

CUSHMAN & WAKEFIELD
200 SOUTH WACKER DRIVE
SUITE 2800
CHICAGO, ILLINOIS 60606

