

FOR LEASE

GRAND CENTRAL BUILDING

216 FIRST AVENUE S

Seattle, WA 98104



FOR LEASE

HISTORIC PIONEER SQUARE OFFICE

The Grand Central Building is located in the heart of Pioneer Square, adjacent to Occidental Park. The historic building features exposed brick, operable windows, high ceilings, and an internal courtyard with restaurants and retail shops.



www.cbre.com/Seattle

CBRE

FOR LEASE

GRAND CENTRAL BUILDING



BUILDING HIGHLIGHTS

- + \$29.00 per square foot
- + Creative feel with exposed brick and beams
- + Building conference room and kitchen
- + Grand Central Bakery, Gaba Sushi, and E. Smith Mercantile located in the building
- + Surrounding area retail amenities include book stores, yoga studio and art galleries
- + Excellent transit access
- + Secure bike storage and showers
- + Flexible lease terms

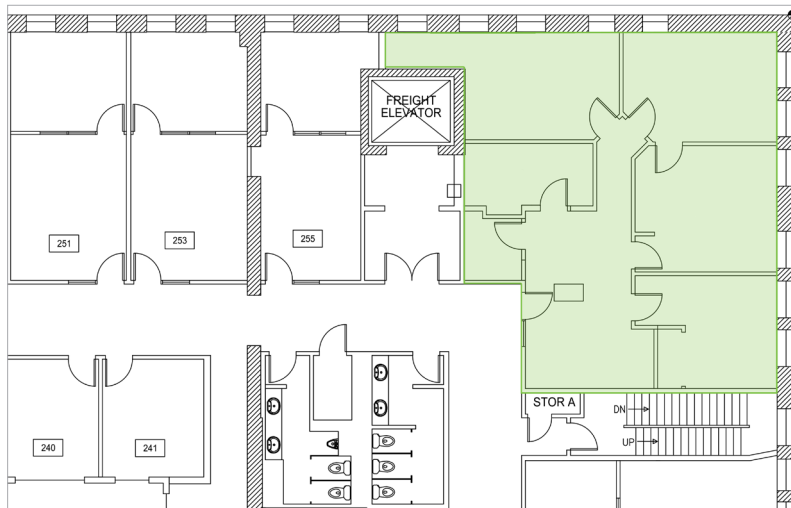


CURRENT AVAILABILITY

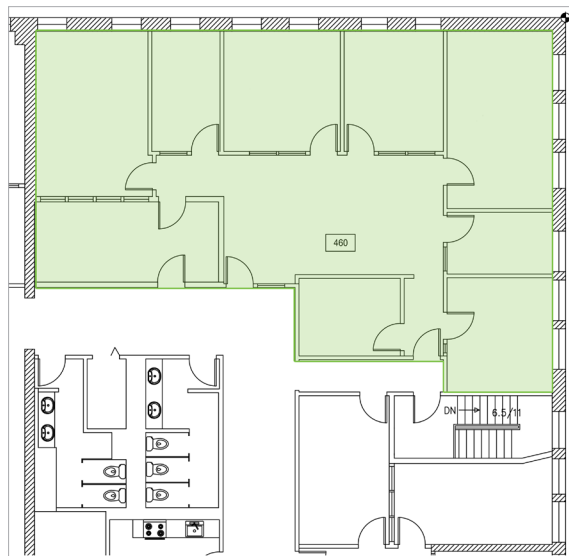
Suite	Size	Available
Suite 260	1,664 RSF	Now
Suite 453	2,339 RSF	Now
Suite 480	638 RSF	Now



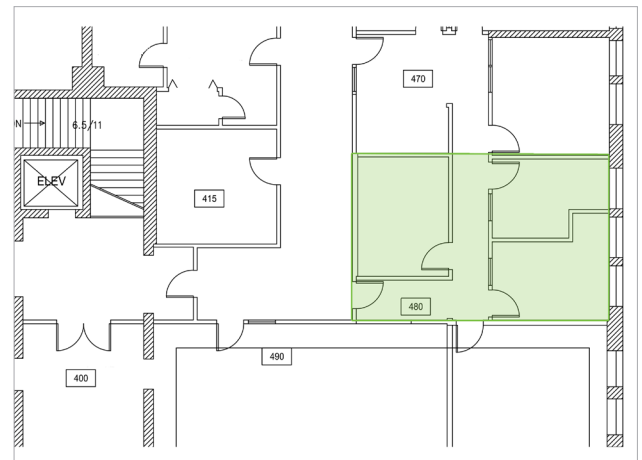
SUITE 260



SUITE 453



SUITE 480

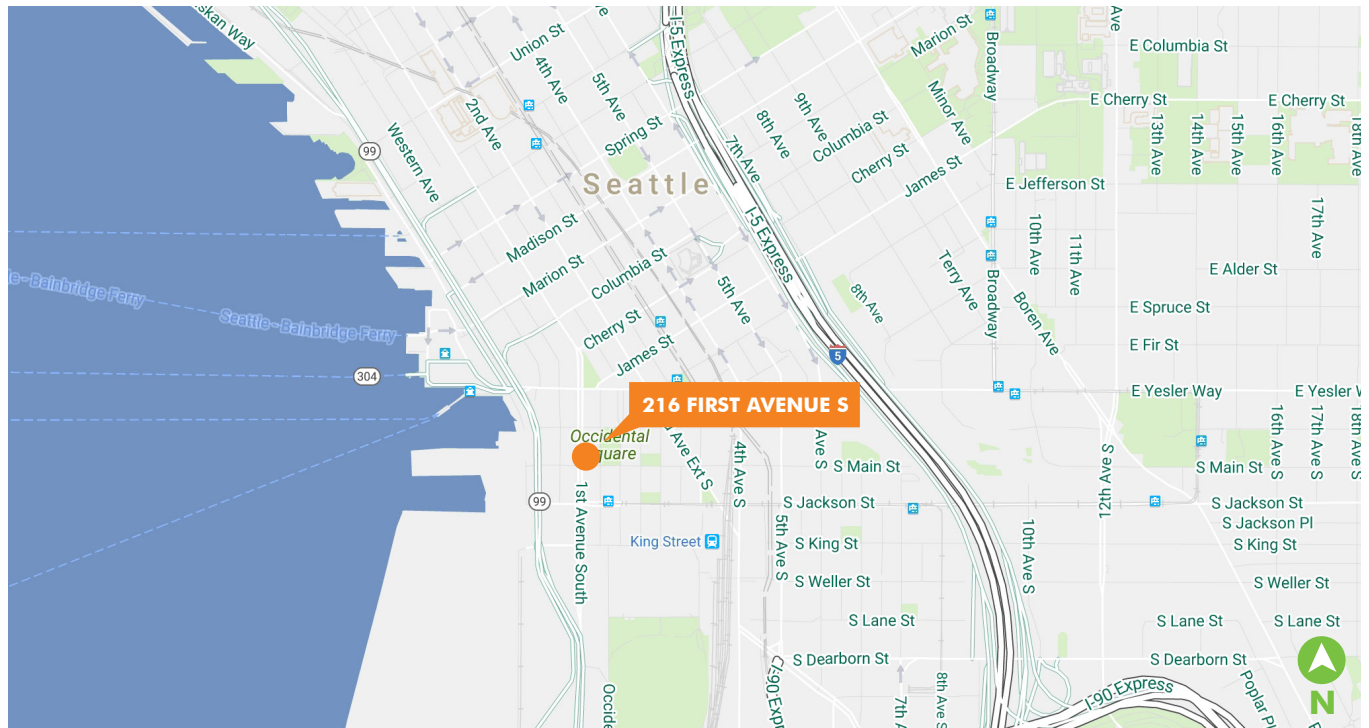


FOR LEASE GRAND CENTRAL BUILDING

216
FIRST AVENUE S
Seattle, WA 98104



AREA MAP



CONTACT US

NATE FLIFLET

Senior Associate
+1 206 292 6119
nate.fliflet@cbre.com

NICK CARKONEN

First Vice President
+1 206 292 6039
nick.carkonen@cbre.com

CBRE, Inc.
1420 Fifth Avenue
Suite 1700
Seattle, Washington 98101

© 2016 CBRE, Inc. This information has been obtained from sources believed reliable. We have not verified it and make no guarantee, warranty or representation about it. Any projections, opinions, assumptions or estimates used are for example only and do not represent the current or future performance of the property. You and your advisors should conduct a careful, independent investigation of the property to determine to your satisfaction the suitability of the property for your needs. Photos herein are the property of their respective owners and use of these images without the express written consent of the owner is prohibited. CBRE and the CBRE logo are service marks of CBRE, Inc. and/or its affiliated or related companies in the United States and other countries. All other marks displayed on this document are the property of their respective owners. LJ101116

www.cbre.com/Seattle

CBRE